

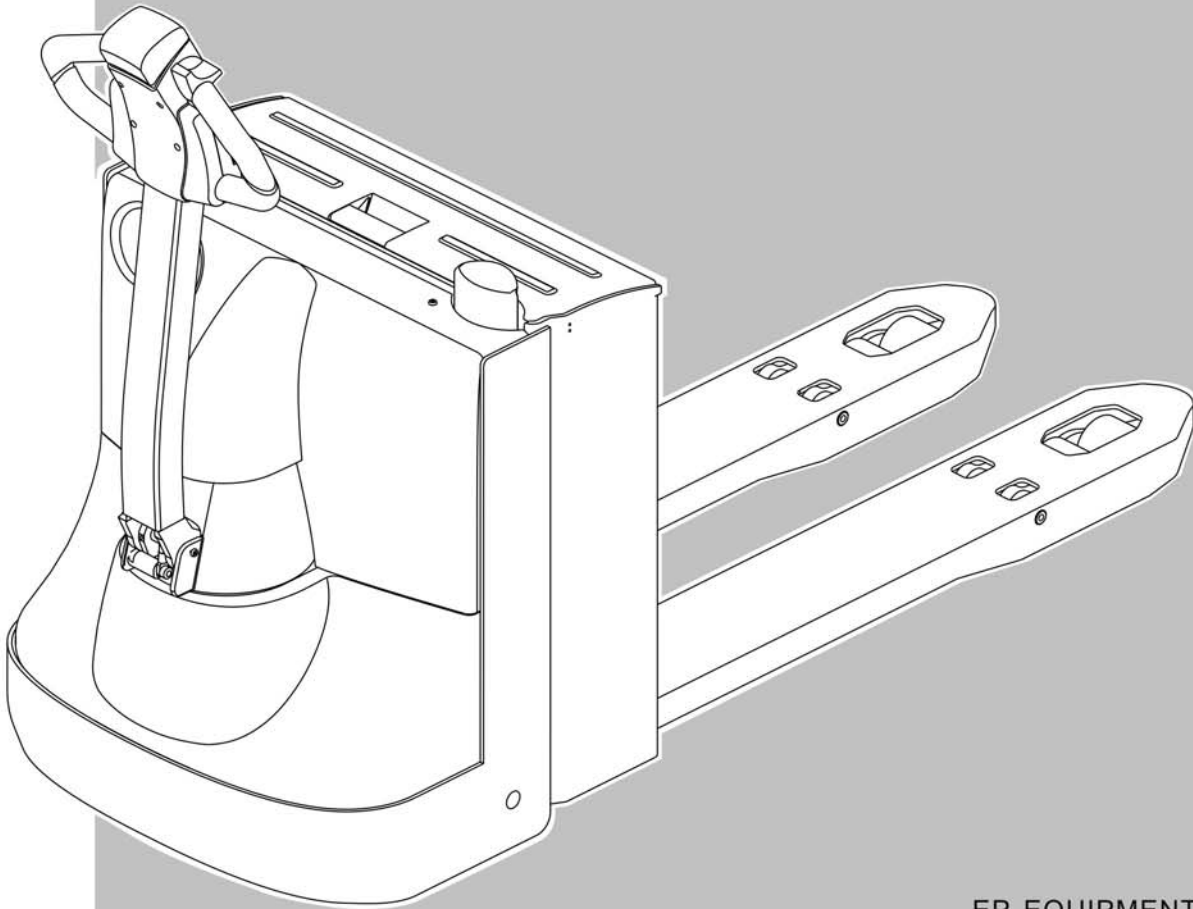


# EPT20-20WA

## Electric Pallet Truck

## 步行式电动搬运车

Parts Manual  
零件目录



CE CERTIFICATE

EP EQUIPMENT CO.,LTD.  
XIAQUAN,DIPU,ANJI,ZHEJIANG CHINA

## **PARTS ORDERING INSTRUCTIONS**

### **HOW TO ORDER**

When you order, supply the part number, quantity, model and serial numbers of your machine. Supplying this information will assure prompt, efficient handling of your order.

Since your dealer carries many parts in stock and maintains up-to-date prices on all parts, he will be able to process your order immediately. If, for some reason, the part is not in stock, he will order it from the factory. In either event, he maintains a current file of service manuals, which give all available parts ordering or technical information.

### **WHERE TO ORDER**

Always order parts from the dealer who sold you your EP. If it is necessary for the dealer to order parts from the factory, he is able to get prompt service for you. Parts are shipped in accordance with shipping instructions given on the order.

### **INSTRUCTIONS FOR RETURNING PARTS**

Under NO CIRCUMSTANCES will parts be accepted at the factory for credit without prior approval . EP cannot accept responsibility for parts returned without authorization.

If you have some parts which must be returned, contact your dealer. If he believes parts should be returned, he will arrange for authorization to return the parts.

### **CHANGES**

When changes are made to the machine, revised pages for this manual will be issued. These pages must be inserted in your parts manual as soon as they are received. Failure to keep your parts manuals up to date will result in confusion and may cause you to order wrong parts.

**EP EQUIPMENT CO.,LTD.**

**Address: XIAQUAN,DIPU,ANJI,ZHEJIANG,CHINA**

**Tel:86-571-28035626/28035657**

**Fax:86-571-28035616**

**Net:www.ep-ep.com**

**Email:epparts@ep-ep.com**

**ALL RIGHT RESERVED COPYRIGHT**

**2012.3 2<sup>st</sup> EDITION**

## 零件订购说明

### 如何订购

当您订购的时候，您需要提供搬运车零件的编号，数量，型号和序列号。提供这些信息能够保证您的订购更加的高效。

因为您的经销商有很多零件的存货，而且需要保持所有零件的价格是最新的，所以他会尽快地处理您的订购需求。假如因为某些原因，存货中没有这个零件，那么他会从公司订货。无论怎么样的情况，他手里都会有一份服务手册文件，它能提供所有可用的零件的订购信息或者技术信息。

### 订购地点

当您需要订购零件时，请到销售给您 EP 搬运车的经销商那里订购。如果经销商有必要从公司订购零件，他能为您提供快捷的服务。根据您的订购信息，零件和它对应的操作说明会一起装好。

### 零件的退还说明

一般情况下，因为信用的关系，退还的零件没有事先的同意，是不会被公司认可的。EP 不会对没有经过授权但退还过来的零件负责。

如果您有一些零件一定要退还，请联系您的经销商。若经销商确认零件可以退还，则其会安排授权要退还的零件。

### 技术修改

当搬运车技术有修改时，这本手册的修正页会重新发行。当您拿到这些修正页时，您一定要立即把它们插入到您的零件手册中。若没有及时的更新您的零件手册，则可能会导致您订购、维护等方面的错误。

浙江中力机械有限公司

地址：浙江省安吉县递铺镇霞泉村中力园区

电话：86-572-5333327

传真：86-572-5333325

网址：[www.ep-ep.com](http://www.ep-ep.com)

邮箱：[epparts@ep-ep.com](mailto:epparts@ep-ep.com)

版权归本公司所有  
2012年3月 第2版

## GENERAL INFORMATION

### INDEX

This parts manual is arranged for easy identification of parts .The index at the front of the catalog gives location of major groups and assemblies.

### PART LIST

The **Index**, describes the item on the Figure you are looking at. The **Part No.** is a numerical description of the item and the part ordering number. The **Part Name** is a description of the part number in alphabetical form. The **No.** is the quantity used on the machine.The **Applied Date** is a description when the part is applicable.The **Remark** is the explanation of the part for a supplement,such as the model,the capability, the characteristic,etc.

### HOW TO READ PART LIST

#### EXAMPLE:

Index	Part No.	Part Name	No.	Applied Date	Remark	
序号	零件编号	零件名称	数量	适用时间	备注	
A	9	1120-342101-00	Button Bracket (L)	开关座左	1	
	10	<b>1120-342002-00</b>	<b>Horn Button</b>	喇叭按钮	<b>1</b>	
		<b>1120-342005-00</b>	<b>Pin</b>	销轴	<b>2</b>	
		<b>1120-342003-00</b>	<b>Spring</b>	弹簧	<b>2</b>	
		<b>1120-342004-00</b>	<b>Button Bracket</b>	喇叭开关支架	<b>1</b>	
	11	0000-000039-00	Screw ST3.5×9.5	螺钉	6	
B	22	2108-540000-00	Bracket	电瓶固定板	1	
	23	<b>2108-550000-00-01</b>	<b>Battery</b>	电瓶	<b>2</b>	<b>60AH / 12V</b>
	23	<b>2108-550000-00-02</b>	<b>Battery</b>	电瓶	<b>2</b>	<b>80AH / 12V</b>
	24	0000-000378-00	Screw M4×16	螺钉	2	
C	7	<b>01 2125-410004-00</b>	<b>Cap</b>	导向套	<b>1</b>	<b>-071011</b>
		<b>02 2125-410004-0A</b>	<b>Cap</b>	导向套	<b>1</b>	<b>071011-</b>
	8	0000-000084-00	Ring Wiper	防尘圈	1	
	9	0000-000370-00	O-ring	O型密封圈	1	
	10	2125-410005-00	Ring Back Up	支撑环	1	
	11	<b>01 0000-000197-00</b>	<b>Rod Packing 40×50×6</b>	<b>Yx 密封圈</b>	<b>1</b>	<b>Old</b>
		<b>02 0000-000512-00</b>	<b>Rod Packing 40×50×6</b>	<b>Yx 密封圈</b>	<b>1</b>	<b>New</b>

**A:** The part of Index 10 is a discreteness with four kings of parts.It denotes **Not Sold Separately**.

**B:** The part of Index 23 is **Optional**.

**C:** The part of Index 7 has an **Applicability**,because it's our policy to constantly improve our products.

**-071011** : Ending at 07/10/2011

**071011-** : Beginning at 07/10/2011

The part of Index 11 is same ,but the Part Number is changed.And please use the new Part Number when you order this part.

## 概要

### 目录

将零件目录分成几个易识别的部分，并把主要结构和总成放置在索引目录中。

### 零件明细表

**Index** 描述的是在插图上，您想要找的项目。**Part No.**是零件的一系列描述和它的订购号码。**Part Name** 是用文字的形式描述零件的号码。**No.**代表的是零件在搬运车上使用的数量。**Applied Date** 表示的是零件适用的时间范围。**Remark** 是用来补充说明零件信息(例如车型、性能和特征等)。

### 怎么读取零件明细表

例如：

	Index 序号	Part No. 零件编号	Part Name 零件名称	No. 数量	Applied Date 适用时间	Remark 备注
A	9	1120-342101-00	Button Bracket (L)	1		
	10	<b>1120-342002-00</b>	<b>Horn Button</b>	<b>1</b>		
		<b>1120-342005-00</b>	<b>Pin</b>	<b>2</b>		
		<b>1120-342003-00</b>	<b>Spring</b>	<b>2</b>		
		<b>1120-342004-00</b>	<b>Button Bracket</b>	<b>1</b>		
	11	0000-000039-00	Screw ST3.5×9.5	6		
B	22	2108-540000-00	Bracket	1		
	23	<b>2108-550000-00-01</b>	<b>Battery</b>	<b>2</b>		<b>60AH / 12V</b>
	23	<b>2108-550000-00-02</b>	<b>Battery</b>	<b>2</b>		<b>80AH / 12V</b>
	24	0000-000378-00	Screw M4×16	2		
C	7	<b>01 2125-410004-00</b>	<b>Cap</b>	<b>1</b>	<b>-071011</b>	
		<b>02 2125-410004-0A</b>	<b>Cap</b>	<b>1</b>	<b>071011-</b>	
	8	0000-000084-00	Ring Wiper	1		
	9	0000-000370-00	O-ring	1		
	10	2125-410005-00	Ring Back Up	1		
	11	<b>01 0000-000197-00</b>	<b>Rod Packing 40×50×6 Yx 密封圈</b>	<b>1</b>		<b>Old</b>
	<b>02 0000-000512-00</b>	<b>Rod Packing 40×50×6 Yx 密封圈</b>	<b>1</b>		<b>New</b>	

**A:** 序号 10 表示的是一个由四种零件组成的组件，不以单件形式出售。

**B:** 序号 23 表示该零件有几个品种可供您的选择

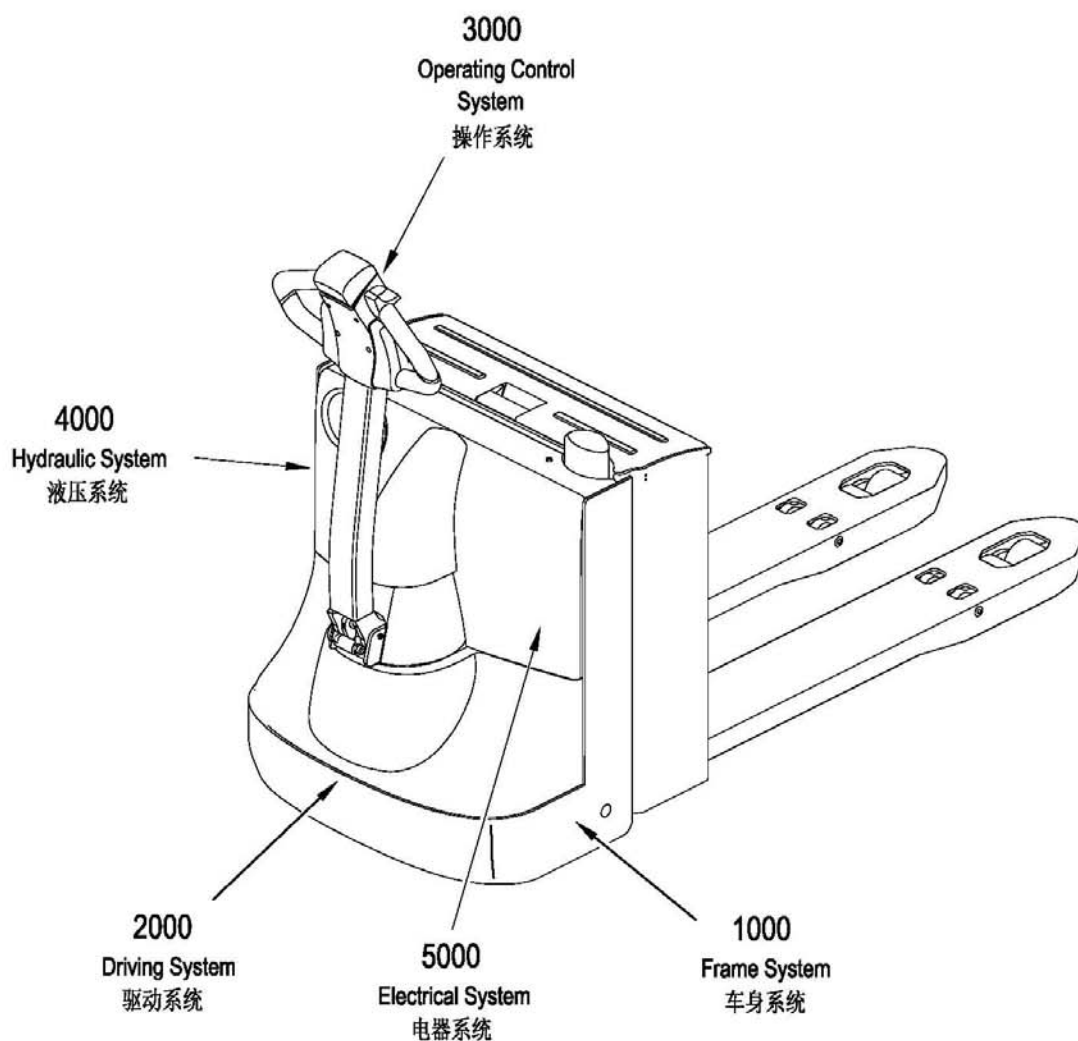
**C:** 序号 7 表示该零件有一个适用的时间范围。这是因为我们在不断地进行产品的升级。

**-071011** : 2011 年 7 月 10 日停止使用

**071011-** : 2011 年 7 月 10 日开始使用

序号 11 表示的都是同一种零件，只是零件编码有所变更。因此，当您订购这类零件时，请您使用新的零件编码。

## Major Assemblies



**WARNING:** Note that illustrations of assemblies and components may not necessarily conform to the exact installation as they appear on your truck. But this Manual can help you locate specific parts information of your truck.

**注意:** 表达在零件目录上的总成和结构内容可能不会完全地出现在您的车型上，但是您可以在零件目录中查询到您所选购车型的零件信息。

## INDEX 目录

### 1000 Frame System 车身系统

1100-000 Double-Wheels Lifting Structure 双轮起升结构.....	4
1100-100 Single Wheel Lifting Structure 单轮起升结构.....	6
1110-000 Double Load Wheel 双轮承载轮.....	10
1111-100 single-Load Wheel 单轮承载轮.....	12
1200-000 Electric Structure II 电动搬运车结构 II.....	14
1210-000 Caster Assembly 万向轮.....	16
1300-000 Electric Structure III 电动搬运车结构 III.....	18
1310-000 Battery Cover Assembly 电瓶盒盖总成.....	20

### 2000 Driving System 驱动系统

2000-000 Driving Assembly 驱动总成.....	24
2100-000 Gear Case Assembly I 减速箱总成 I.....	26
2100-100 Gear Case Assembly II 减速箱总成 II.....	28
2200-000 Motor Assembly 电机总成.....	30

### 3000 Operating Control System 操作系统

3000-000 Operating Control System 操作系统.....	34
3100-000 Control Pod Assembly 操作手柄头总成.....	36
3110-000 Upper Cover Assembly 上盖总成.....	38
3120-000 Button Reverser Assembly 紧急反向开关总成.....	40

### 4000 Hydraulic System 液压系统

4000-000 Hydraulic System 液压系统.....	44
4100-000 Hydraulic Pump Assembly 液压站总成.....	46
4200-000 Lifting Cylinder 起升油缸.....	48

### 5000 Electrical System 电器系统

5000-000 Electrical System 电器系统.....	52
5110-000 Contactor Panel Assembly 电器安装板总成.....	54
5200-000 Wire Harness I 线束 I.....	56
5300-000 Wire Harness II 线束 II.....	58

### 6000 Attached Drawing 附图

6100-000 Nameplate 铭牌.....	62
----------------------------	----



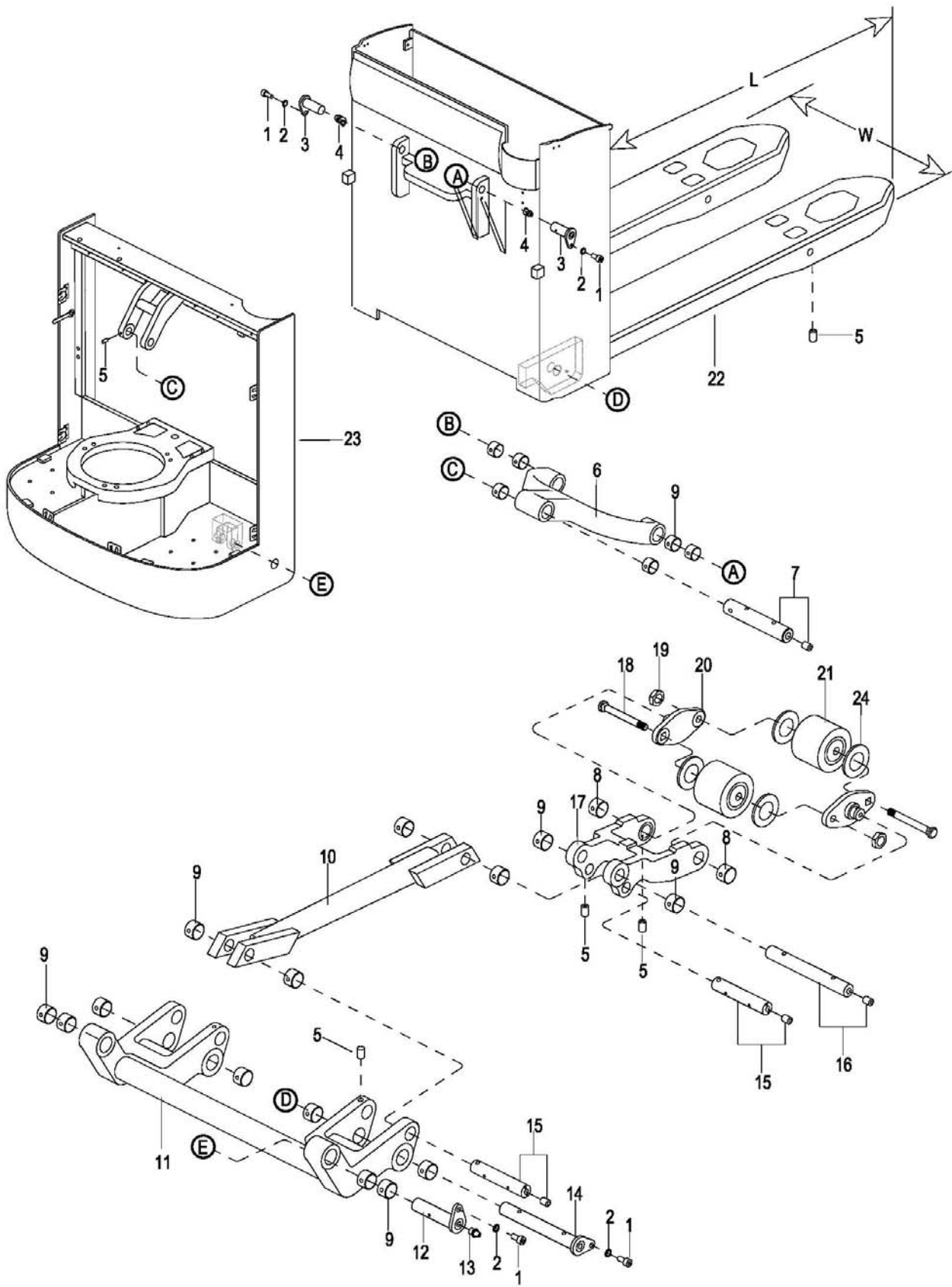


**1000**

**Frame System**

车身系统

1100-000 Double-Wheels Lifting Structure



**1100-000 Double-Wheels Lifting Structure**

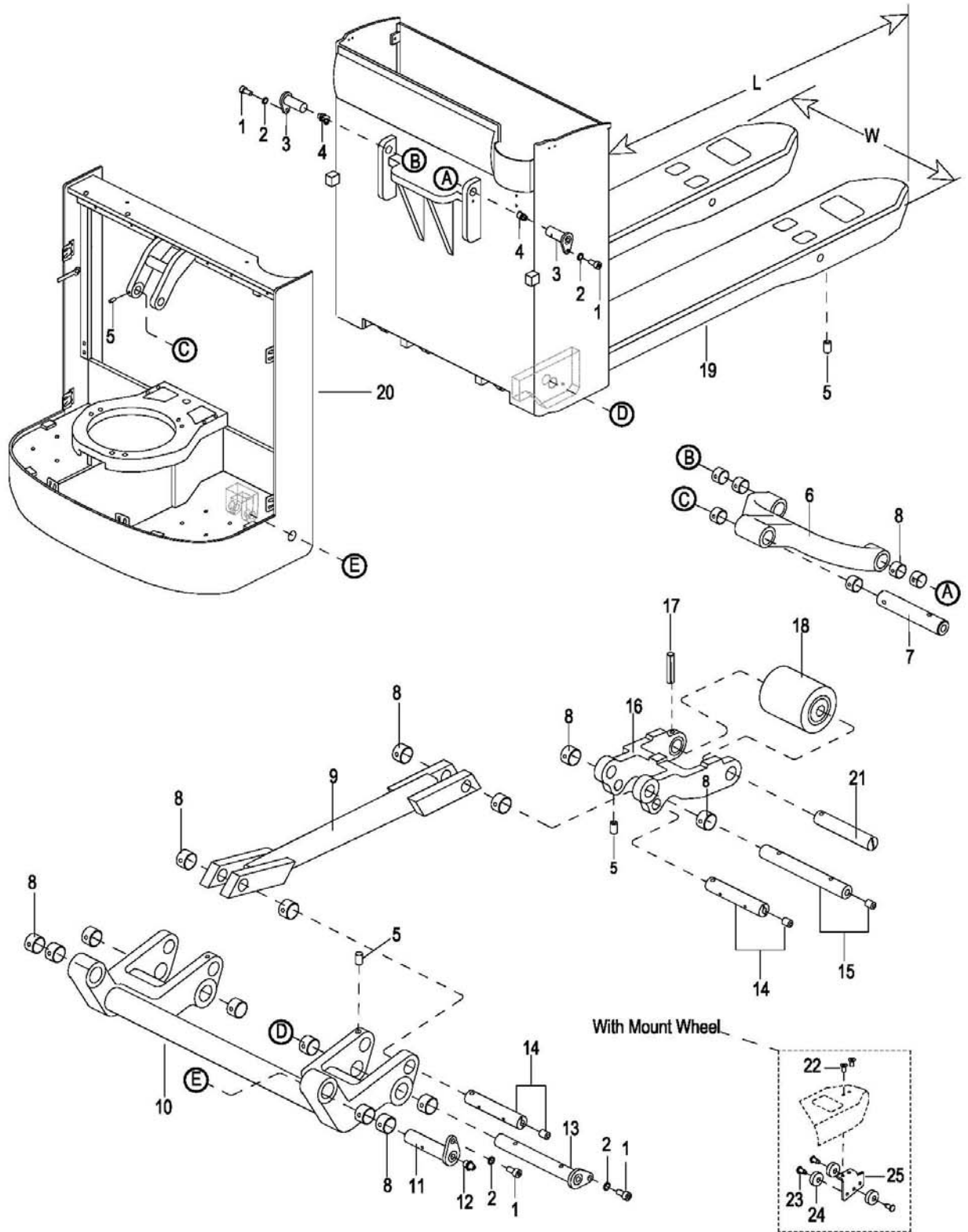
双轮起升结构

Index 序号	Part No. 零件编号	Part Name 零件名称		No. 数量	Applied Date 适用日期	Remark 备注
1	0000-000055-00	Screw M6x16	螺钉	6		
2	0000-000056-00	Lockwasher ø6	弹垫	6		
3	1120-134000-0A	Pin	销轴	2		
4	0000-000014-00	Grease Fitting M8	油杯	2		
5	0000-000016-00	Screw M6x8	螺钉	9		
6	1120-130001-00	Link	上连杆	1		
7	1120-130002-0A	Pin	销轴	1		
8	0000-000017-00	Bushing	轴套	4		
9	0000-000011-00	Bushing	轴套	26		
10	See Form 1.1	Long Link Assembly	长连杆总成	2		
11	See Form 1.1	Down Link Assembly	下连杆总成	1		
12	1120-135000-00	Pin	销轴	2		
13	0000-000013-00	Grease Fitting M8	油杯	2		
14	1120-131000-0A	Pin	销轴	2		
15	1120-130006-0A	Pin	销轴	4		
16	1120-130007-0A	Pin	销轴	2		
17	1120-130008-0A	Wheel Bracket	轮架	2		
18	1120-130009-00	Bolt	螺栓	4		
19	0000-000496-00	Nut M12	螺母	4		
20	1120-130010-00	Plate Side	夹板	4		
21	1120-133000-00	Double Load Wheels See Fig 1110-000	双轮总成 见图 1110-000	4		
22	1120-110000-00	Fork Frame Assembly	前车架总成	1		
23	1120-120000-00	Back Frame Assembly	后车架总成	1		
24	0000-000435-00	Washer ø20	垫片	Req.		

**Form 1.1**

Space Between Fork(W) 叉脚间距		ForkLength (L) 叉脚长度		Part No. Of Down Link 下连杆编号	Part No. Of Long Link 长连杆编号	Remark 备注
mm	in	mm	in			
520	20.47	1220	48.03	1220-133000-70	1120-132000-1A	
		1350	53.15		1120-132000-4A	
540	21.26	1150	45.28	1220-133000-00	1120-132000-0A	
		1220	48.03		1120-132000-1A	
		850	33.46		1120-132000-6A	
		1000	39.37		1120-132000-8A	
		1300	51.18		1120-132000-AA	
		1450	57.09		1120-132000-CA	
685	26.97	1150	45.28	1220-133000-10	1120-132000-0A	
		1220	48.03		1120-132000-1A	
		850	33.46		1120-132000-6A	
		1000	39.37		1120-132000-8A	
		1300	51.18		1120-132000-AA	
		1450	57.09		1120-132000-CA	
600	23.62	1150	45.28	1220-133000-60	1120-132000-0A	
		1220	48.03		1120-132000-1A	
		850	33.46		1120-132000-6A	
		1000	39.37		1120-132000-8A	
		1300	51.18		1120-132000-AA	
		1450	57.09		1120-132000-CA	

1100-100 Single Wheel Lifting Structure



### 1100-100 Single Wheel Lifting Structure

#### 单轮起升结构

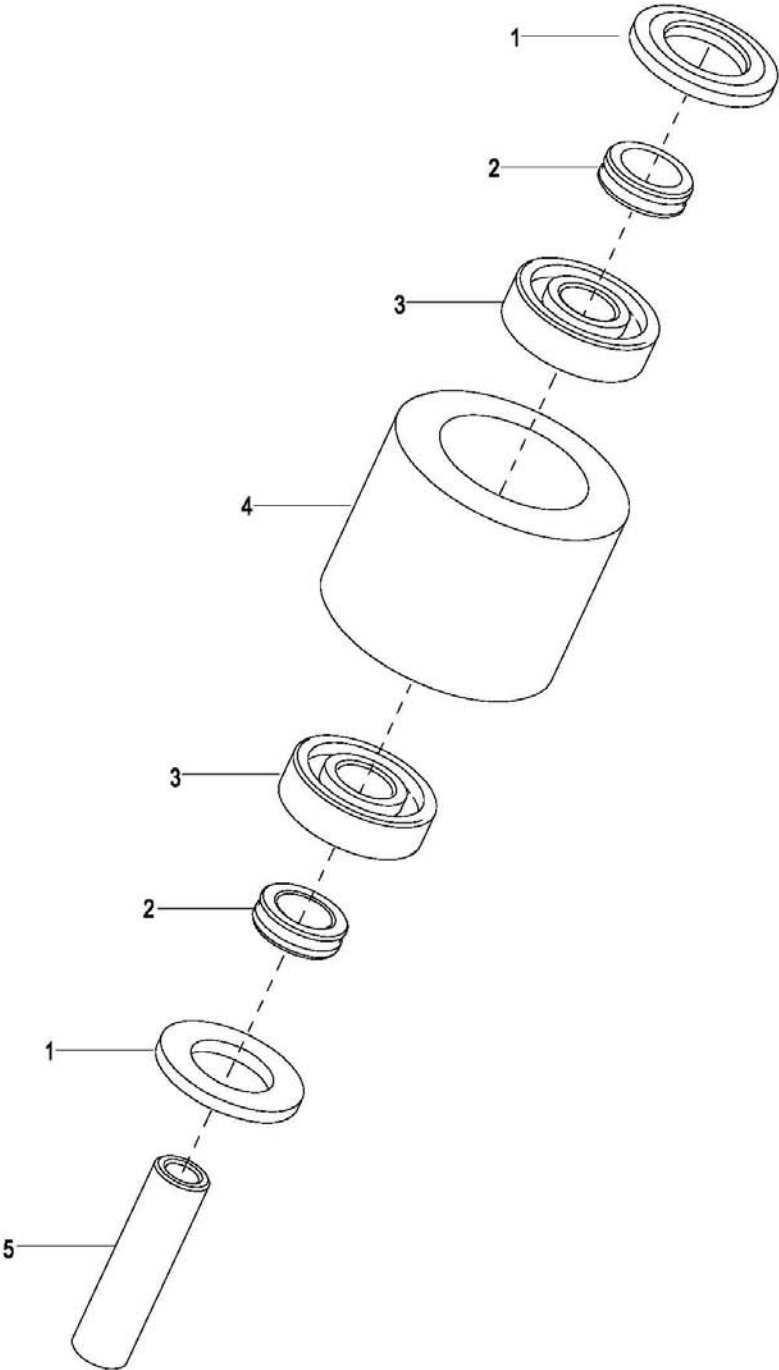
Index	Part No.	Part Name	No.	Applied Date	Remark
序号	零件编号	零件名称	数量	适用日期	备注
1	0000-000055-00	Screw M6x16	6		
2	0000-000056-00	Lockwasher ø6	6		
3	1120-134000-0A	Pin	2		
4	0000-000014-00	Grease Fitting M8	2		
5	0000-000016-00	Screw M6x8	7		
6	1120-130001-00	Link	1		
7	1120-130002-0A	Pin	1		
8	0000-000011-00	Bushing	26		
9	See Form 1.2	Long Link Assembly	2		
10	See Form 1.2	Lower Link Assembly	1		
11	1120-135000-00	Pin	2		
12	0000-000013-00	Grease Fitting M8	2		
13	1120-131000-0A	Pin	2		
14	1120-130006-0A	Pin	4		
15	1120-130007-0A	Pin	2		
16	01 1120-130008-00	Wheel Bracket	2	-101311	
	02 1120-130008-0A	Wheel Bracket	2	101311-	
17	01 0000-000016-00	Screw M6x8	2	-101311	
	02 0000-000414-00	Pin 6x50	2	101311-	
18	1120-133000-10	Single Load Wheel See Fig 1110-100	4		单承载轮总成 见图 1110-100
19	See Form 1.2	Fork Frame Assembly	1		前车架总成
20	See Form 1.2	Back Frame Assembly	1		后车架总成
21	01 1120-130010-10	Pin	2	-101311	
	02 1120-130010-1A	Pin	2	101311-	
22	0000-000177-00	Screw M8x12	2		
23	1145-101003-00	Bolt	3		
24	1145-101002-00	Wheel	3		
25	1145-101001-00	Mount Wheel Bracket	1		

Form 1.2

Space Between Fork(W) 叉脚间距		ForkLength (L)叉脚长度		Part No. Of Lower Link 下连杆编号	Part No. Of Long Link 长连杆编号	Remark 备注
mm	in	mm	in			
540	21.26	1150	45.28	1220-133000-00	1120-132000-1A	
		1220	48.03		1120-132000-1A	
		850	33.46		1120-132000-5A	
		1000	39.37		1120-132000-7A	
		1300	51.18		1120-132000-9A	
		1450	57.09		1120-132000-BA	
		1150	45.28		1120-132000-1A	With Mount Wheel
685	26.97	1150	45.28	1220-133000-10	1120-132000-1A	
		1220	48.03		1120-132000-1A	
		850	33.46		1120-132000-5A	
		1000	39.37		1120-132000-7A	
		1300	51.18		1120-132000-9A	
		1450	57.09		1120-132000-BA	
		1150	45.28		1120-132000-1A	With Mount Wheel
600	23.62	1150	45.28	1220-133000-60	1120-132000-1A	
		1220	48.03		1120-132000-1A	
		850	33.46		1120-132000-5A	
		1000	39.37		1120-132000-7A	
		1300	51.18		1120-132000-9A	
		1450	57.09		1120-132000-BA	
		1150	45.28		1120-132000-1A	With Mount Wheel



1110-000 Double Load Wheel



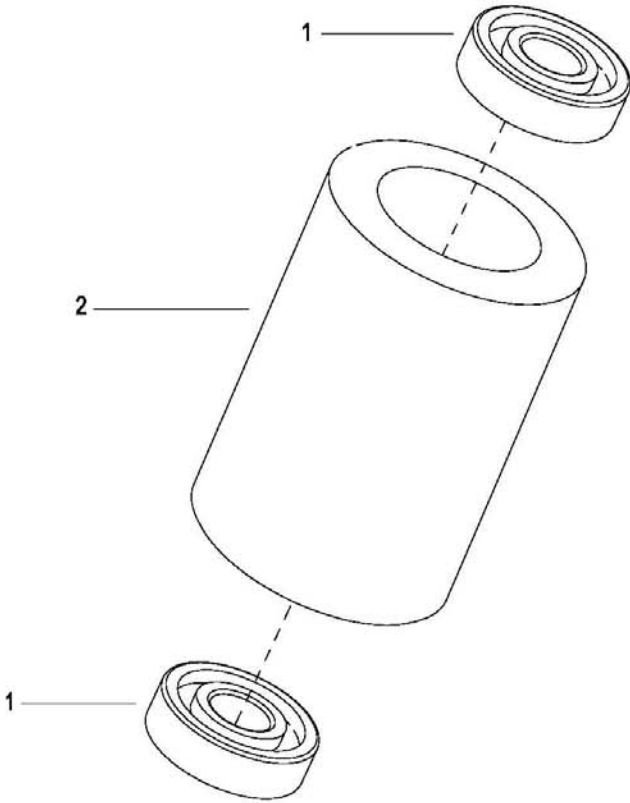


1110-000 Double Load Wheel

双轮承载轮

Index	Part No.	Part Name		No.	Applied Date	Remark
序号	零件编号	零件名称		数量	适用日期	备注
1	1120-133004-00	Shield	防尘盖	2		
2	1120-133002-00	Inserts	防尘盖嵌件	2		
3	0000-000019-00	Bearing 6304RZ	轴承	2		
4	1120-133003-00	Load Wheel	承载 PU 双轮	1		
5	1120-133001-00	Shaft	销轴	1		

1110-100 Single-Load Wheel

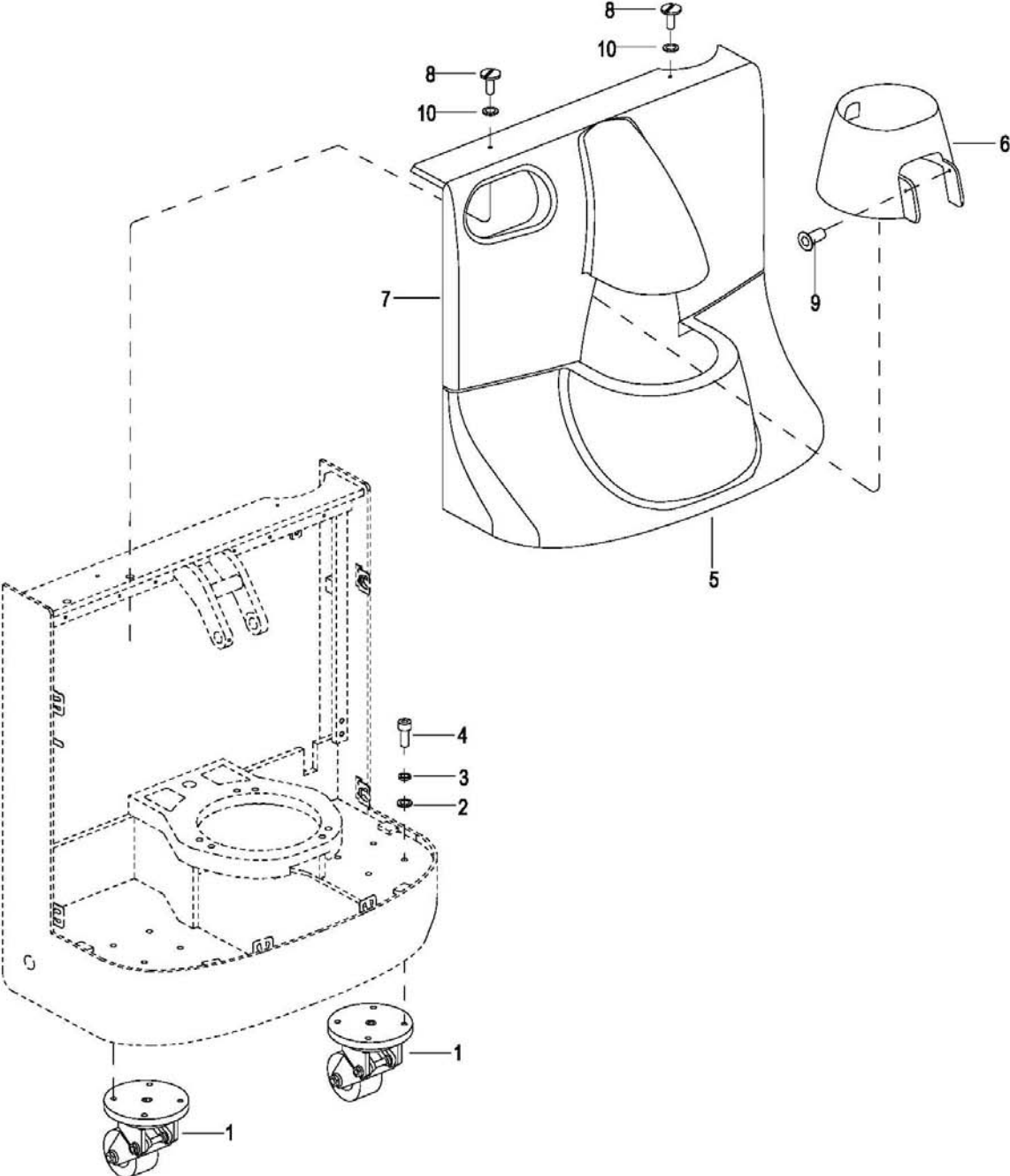


1111-100 single-Load Wheel

单轮承载轮

Index	Part No.	Part Name		No.	Applied Date	Remark
序号	零件编号	零件名称		数量	适用日期	备注
1	0000-000100-00	Bearing 6205Z	轴承	2		
2	1120-133003-10	Load Wheel	PU 单承载轮	1		

1200-000 Electric Structure II

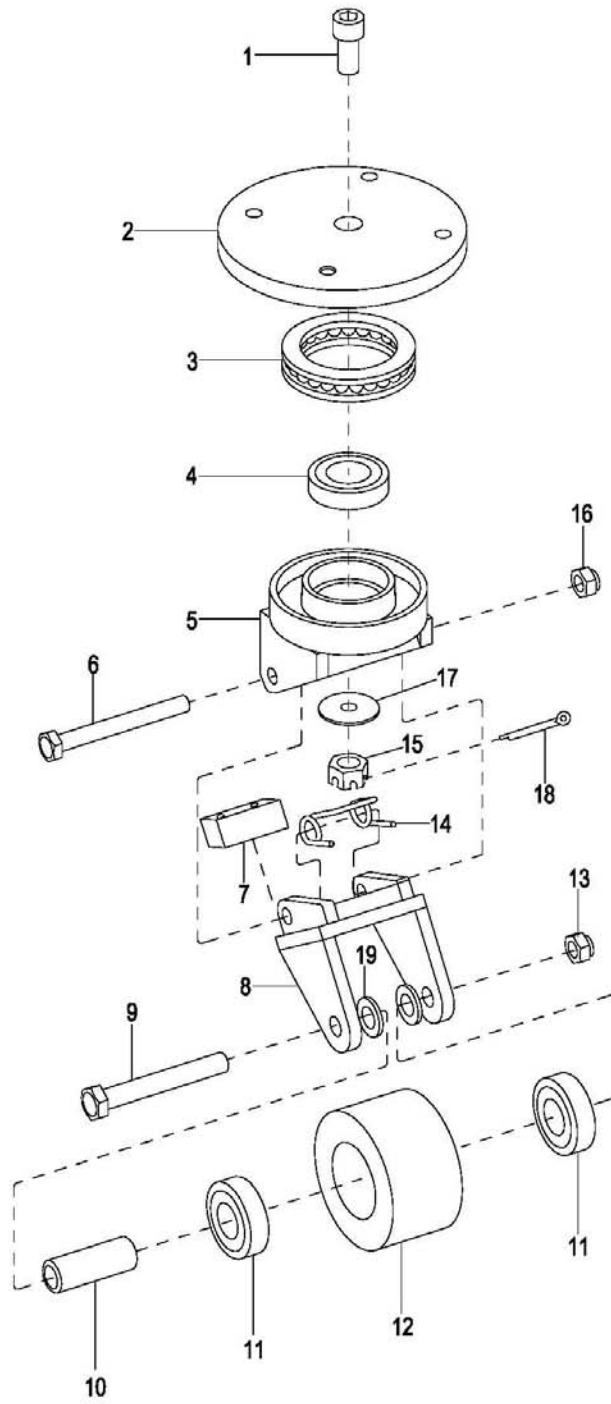


1200-000 Electric Structure II

电动搬运车结构 II

Index	Part No.	Part Name		No.	Applied Date	Remark
序号	零件编号	零件名称		数量	适用日期	备注
1	1120-140000-00	Caster Assembly See Fig	万向轮总成 见图 1210-000	2		
2	0000-000176-00	Flatwasher ø8	平垫	8		
3	0000-000159-00	Lockwasher ø8	弹垫	8		
4	0000-000151-00	Screw M8x25	螺钉	8		
5	1120-150003-00	Lower Cover Assembly	下罩总成	1		
6	1120-150002-00	Middle Cover	旋转罩	1		
7	1120-150001-00	Upper Cover Assembly	上罩总成	1		
8	1120-150004-00	Screw M6x25	螺钉	2		
9	0000-000126-00	Screw M6x16	螺钉	2		
10	2214-150002-00	Washer	垫圈	2		

1210-000 Caster Assembly

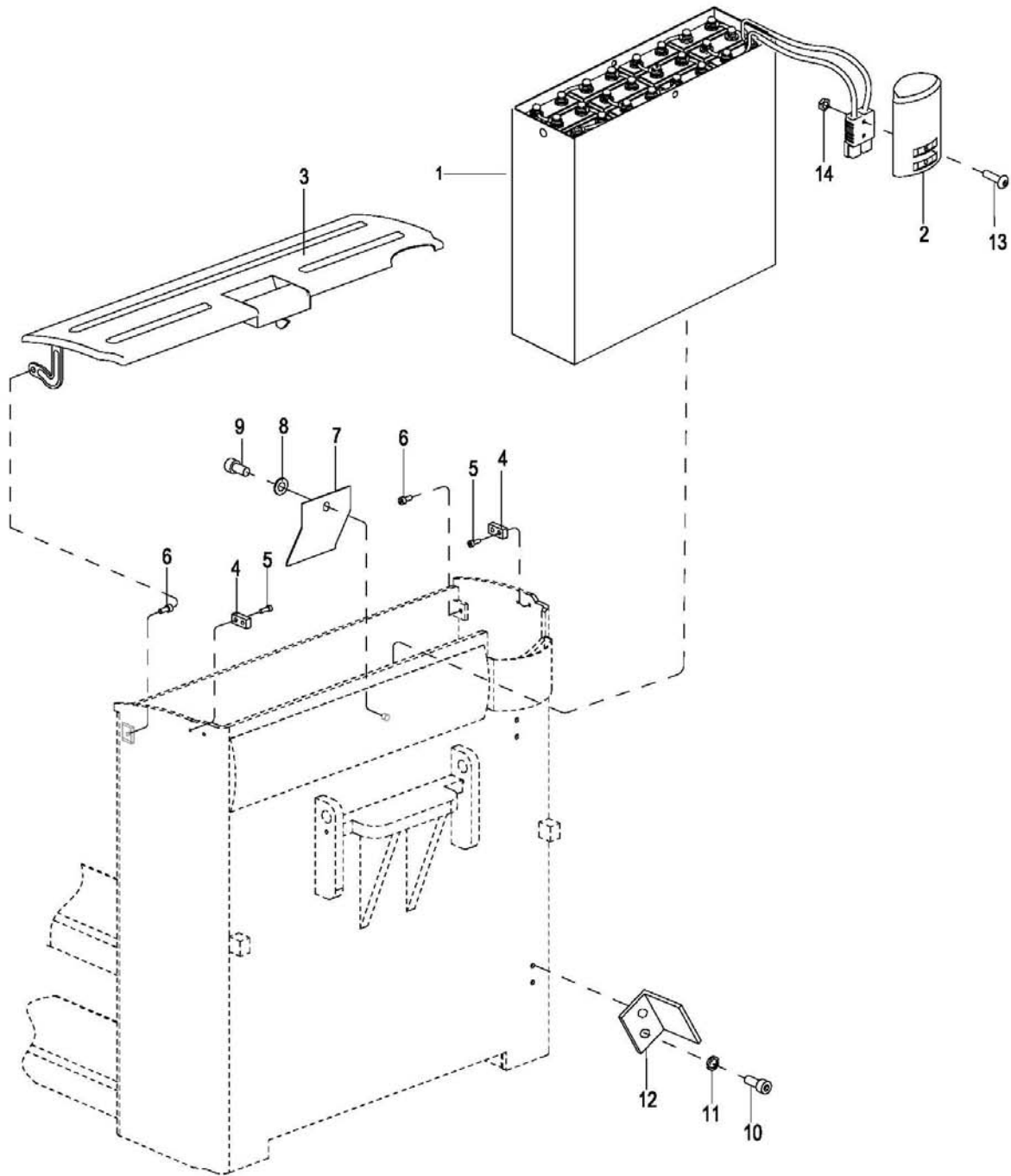


1210-000 Caster Assembly

万向轮

Index	Part No.	Part Name	No.	Applied Date	Remark
序号	零件编号	零件名称	数量	适用日期	备注
1	1120-140002-00	Screw M10x25	1		
2	1120-140001-00	Caster Support	1		
3	0000-000164-00	Bearing 51111	1		
4	0000-000178-00	Bearing 16005	1		
5	1120-141000-00	Caster Support	1		
6	0000-000709-00	Bolt M10x95	1		
7	1120-140003-00	Rubber Block	1		
8	1120-142000-00	Wheel Bracket	1		
9	0000-000495-00	Bolt M12x85	1		
10	1120-143001-00	Shaft	1		
11	0000-000020-00	Bearing 6204	2		
12	1120-143003-00	PU Wheel	1		
13	0000-000057-00	Nut M12	1		
14	1120-140004-00	Spring	1		
15	0000-000174-00	Nut M10	1		
16	0000-000426-00	Nut M10	1		
17	0000-000175-00	Flatwasher ø10	1		
18	0000-000296-00	Cotter Pin ø2x20	1		
19	0000-000172-00	Flatwasher ø20	2		

1300-000 Electric Structure III



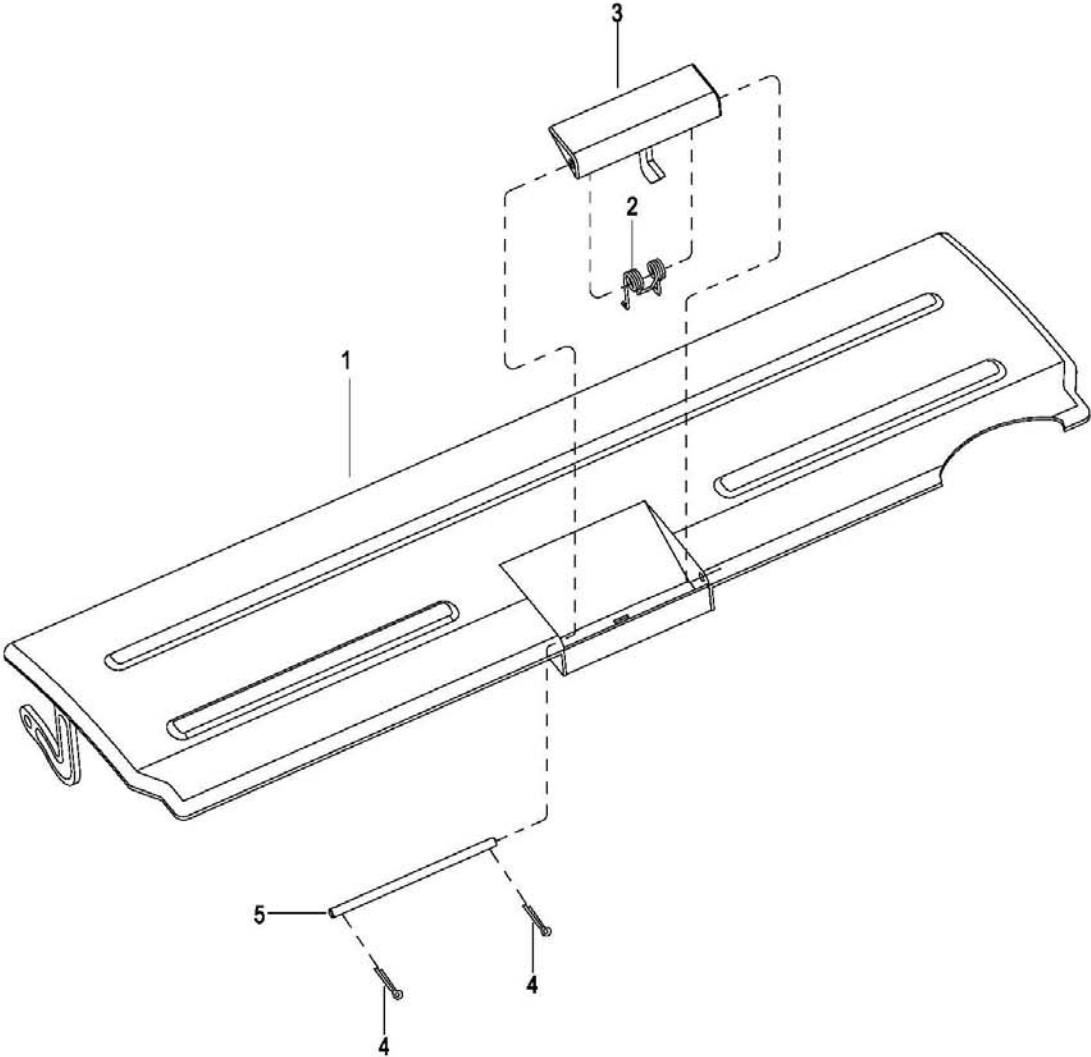


1300-000 Electric Structure III

电动搬运车结构III

Index	Part No.	Part Name	No.	Applied Date	Remark
序号	零件编号	零件名称	数量	适用日期	备注
1	1120-510000-00	Battery	1		电瓶
2	1120-510001-00	Puller	1		插拔器
3	1120-160000-00	Battery Cover Assembly See Fig	1		电瓶盒盖总成 见图
4	1120-100004-00	Rubber Block	2		挡块
5	0000-000077-00	Screw M6×12	4		螺钉
6	0000-000010-00	Screw M5×6	2		螺钉
7	1120-100003-00	Battery Clamp	1		固定夹
8	0000-000007-00	Flatwasher ø10	1		平垫
9	0000-000030-00	Screw M10×16	1		螺钉
10	0000-000055-00	Screw M6×16	2		螺钉
11	0000-000056-00	Lockwasher ø6	2		弹垫
12	1120-100005-00	Lifting Stop Block	1		限位板
13	0000-000170-00	Screw M6×30	2		螺钉
14	0000-000166-00	Nut M6	2		螺母

1310-000 Battery Cover Assembly



### 1310-000 Battery Cover Assembly

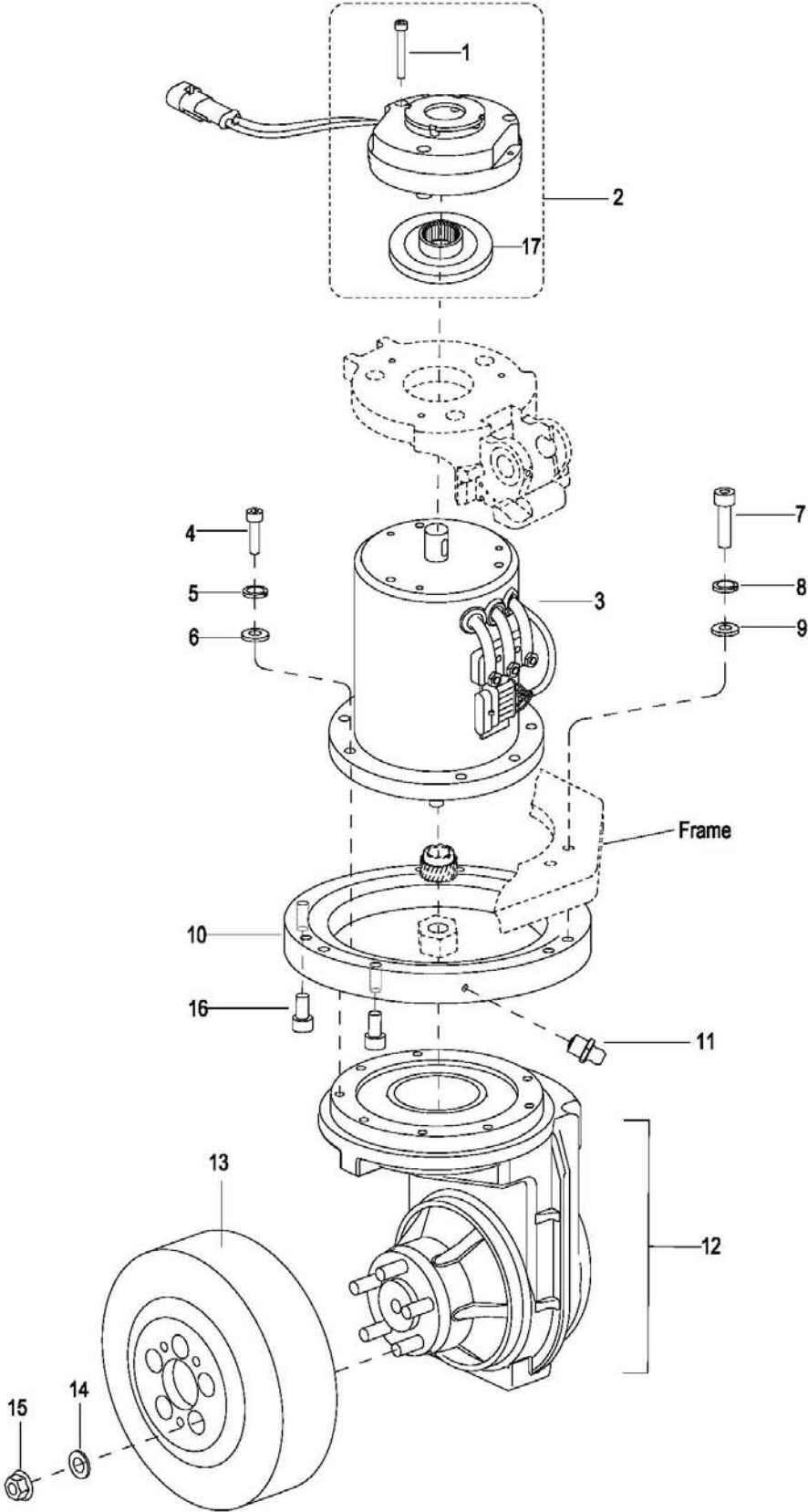
#### 电瓶盒盖总成

Index	Part No.	Part Name		No.	Applied Date	Remark
序号	零件编号	零件名称		数量	适用日期	备注
1	1120-161000-00	Battery Cover	电瓶盖	1		
2	1120-160002-00	Spring	弹簧	1		
3	1120-162000-00	Handle	把手	1		
4	0000-000140-00	Cotter Pin $\varnothing 2 \times 16$	开口销	2		
5	1120-160001-00	Pin	销轴	1		



**2000**  
**Driving System**  
驱动系统

2000-000 Driving Assembly



## 2000-000 Driving Assembly

### 驱动总成

Index	Part No.	Part Name	No.	Applied Date	Remark
序号	零件编号	零件名称	数量	适用日期	备注
1	0000-000027-00	Screw M6x55	3		
2	1120-210000-00	Brake Assembly	1		
3	1120-220000-00	Motor Assembly	1		SeeFig2200-000 见图
4	0000-000169-00	Screw M8x30	8		
5	0000-000159-00	Lockwasher ø8	8		
6	0000-000176-00	Flatwasher ø8	8		
7	0000-000155-00	Screw M10x40	6		
8	0000-000063-00	Lockwasher ø10	6		
9	0000-000007-00	Flatwasher ø10	6		
10	1120-230000-00	Bearing	1		
11	0000-000013-00	Grease Fitting M8	1		
12	1120-240000-00	Gear Case Assembly I	1		减速箱总成 I 见图 2100-000
12	1120-240000-20	Gear Case Assembly II	1		减速箱总成 II 见图 2100-100
12	1120-240000-10	Gear Case Assembly III	1		减速箱总成 III
13	1120-200001-00	Driving Wheel Assembly	1		驱动轮总成
14	0000-000025-00	Lockwasher ø12	5		
15	0000-000157-00	Nut M12	5		
16	0000-000070-00	Screw M10x25	2		
17	1120-210002-00	Brakelining	1		摩擦片

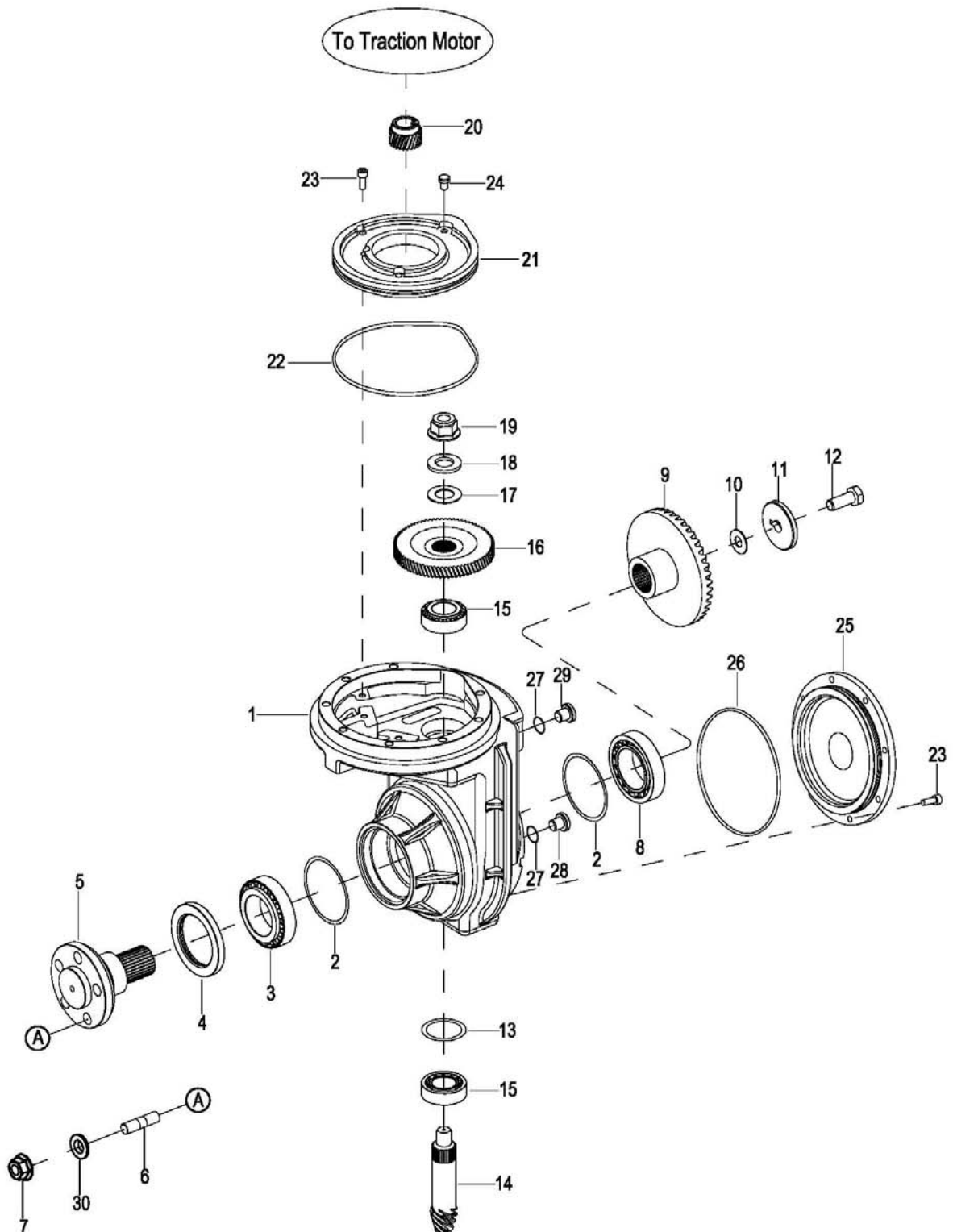
**NOTE 1: See Type Plate, Model: DBS10A**

注释 1: 见铭牌, 类型: DBS10A

**NOTE 2: See Type Plate, Model: GK10**

注释 2: 见铭牌, 类型: GK10

2100-000 Gear Case Assembly I



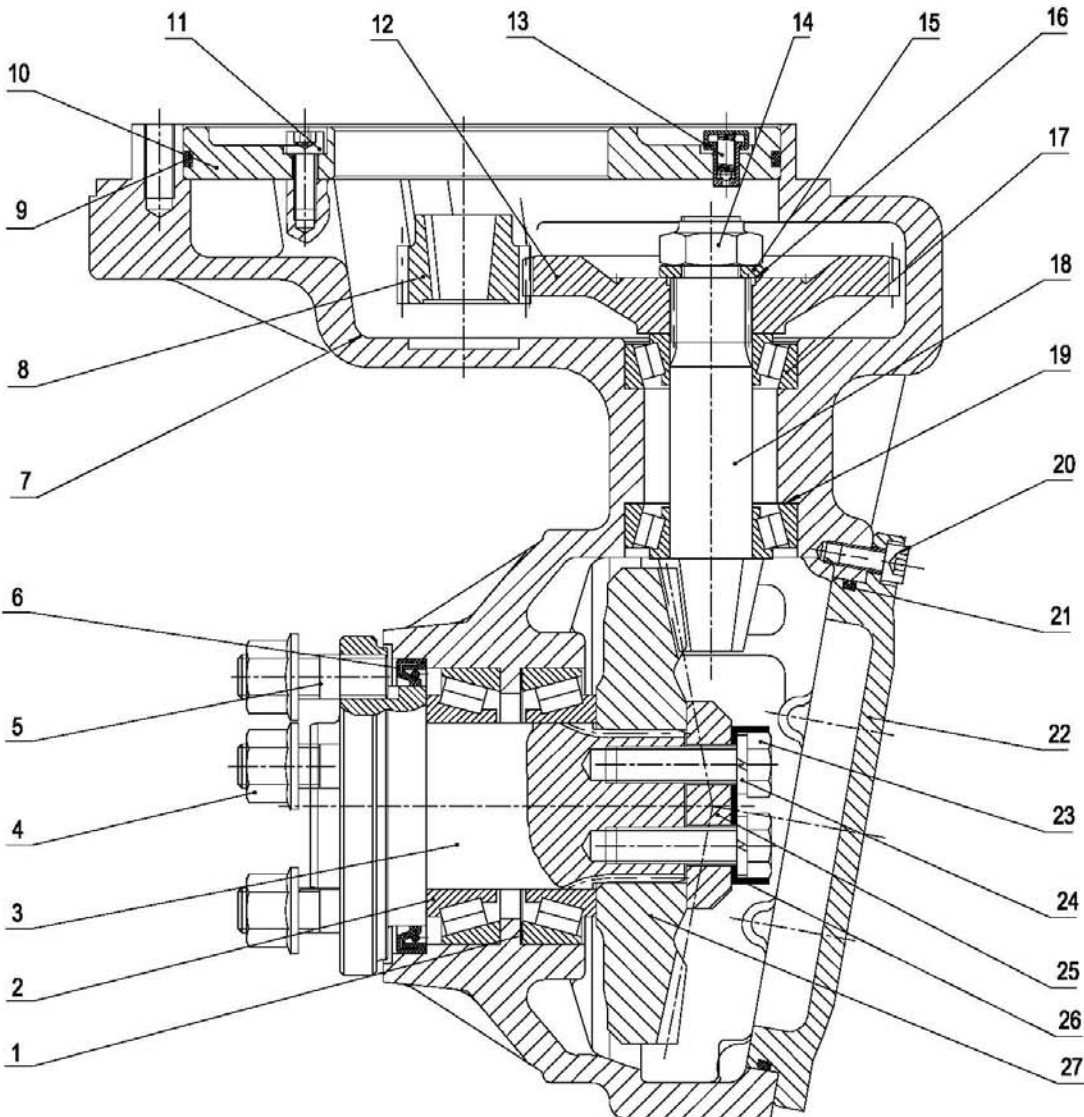


## 2100-000 Gear Case Assembly I

## 减速箱总成 I

Index	Part No.	Part Name	No.	Applied Date	Remark
序号	零件编号	零件名称	数量	适用日期	备注
1	1120-240012-00	Gear Case	壳体	1	
2	1120-240007-00	Washer	调整垫	1	
3	0000-000497-00	Bearing 32010	轴承 32010	1	
4	0000-000389-00	Seal Washer TC52x80x8	油封	1	
5	1120-240011-00	Flange	联接法兰	1	
6	1120-240015-00	Bolt	双头螺栓	5	
7	0000-000157-00	Nut M12	螺母	5	
8	0000-000200-00	Bearing 30208	轴承 30208	1	
9	1120-240003-00	Gear	齿轮	1	
10	1120-240017-00	Washer	调整垫	Req.	
11	1120-240004-00	Washer	垫圈	1	
12	0000-000285-00	Bolt M12x35	螺栓	1	
13	1120-240009-00	Washer	调整垫	Req.	
14	1120-240010-00	Gear	齿轮	1	
15	1120-240018-00	Bearing	轴承 (内/外)	1.set	
16	1120-240002-00	Gear	齿轮	1	
17	1120-240019-00	Washer	调整垫	Req.	
18	1120-240020-00	Washer	垫圈	1	
19	1120-240016-00	Nut	螺母	1	
20	1120-240014-00	Gear	齿轮	1	
21	1120-240001-00	Top Cover	连接盘	1	
22	0000-000211-00	O-ring 150x3.1	O 型圈	1	
23	0000-000055-00	Screw M6x16	螺钉	12	
24	1120-240013-00	Gas Plug	通气塞	1	
25	1120-240008-00	Cover	盖板	1	
26	0000-000214-00	O-ring 135x3.1	O 型圈	1	
27	1120-240021-00	Seal Washer	密封圈	2	
28	1120-240006-00	Plug	螺塞	1	
29	0000-000417-00	Plug M14x1.5	螺塞	1	
30	0000-000025-00	Lockwasher $\varnothing$ 12	弹垫	5	

2100-100 Gear Case Assembly II

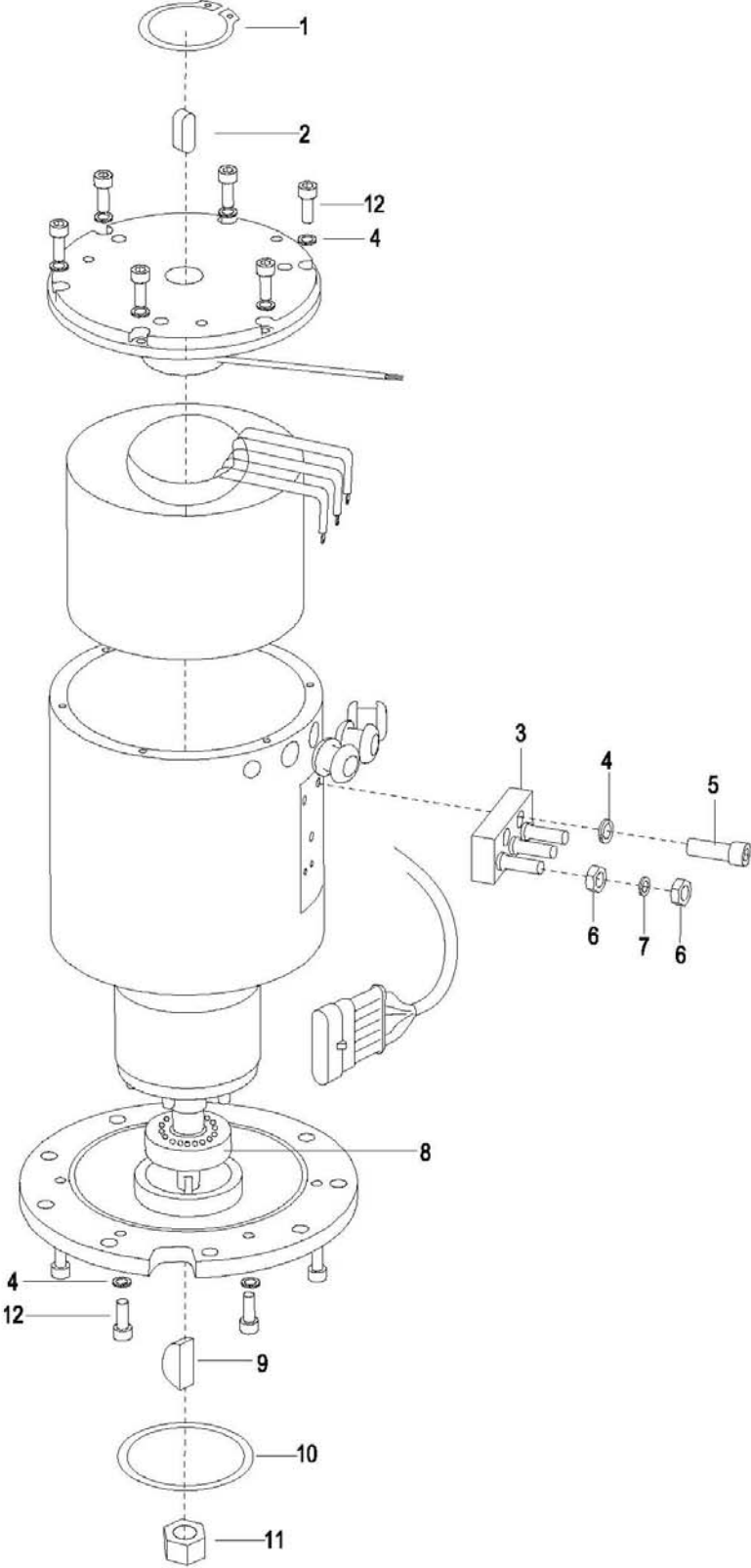


2100-100 Gear Case AssemblyII

减速箱总成 II

Index	Part No.	Part Name	No.	Applied Date	Remark
序号	零件编号	零件名称	数量	适用日期	备注
1	1120-240001-20	Washer	调整垫	Req.	
2	1120-240002-20	Bearing	圆锥滚子轴承	2	
3	1120-240003-20	Flange	连接法兰	1	
4	1120-240004-20	Nut	六角法兰面螺母	5	
5	1120-240005-20	Studs	双头螺柱	5	
6	1120-240006-20	Seal Washer	骨架式橡胶油封	1	
7	1120-240007-20	Gear Case	壳体	1	
8	1120-240008-20	Driving gear	主动齿轮	1	
9	1120-240009-20	Seal Washer	O 型橡胶密封圈	1	
10	1120-240010-20	cover	端板	1	
11	1120-240011-20	Screw	螺钉	4	
12	1120-240012-20	Driven gear	从动齿轮	1	
13	1120-240013-20	Gas Plug	通气塞	1	
14	1120-240014-20	Nut	六角自锁螺母	1	
15	1120-240015-20	Washer	垫片	1	
16	1120-240016-20	Washer	调整垫	Req.	
17	1120-240017-20	Bearing	圆锥滚子轴承	2	
18	1120-240018-20	Output shaft	输出轴	1	
19	1120-240019-20	Washer	调整垫	Req.	
20	1120-240020-20	Screw	螺钉	8	
21	1120-240021-20	Seal Washer	O 型橡胶密封圈	1	
22	1120-240022-20	cover	盖板	1	
23	1120-240023-20	Bolt	螺栓	3	
24	1120-240024-20	Lockwasher	弹垫	3	
25	1120-240025-20	End cap	端盖	1	
26	1120-240026-20	Locking piece	锁片	1	
27	1120-240027-20	Spiral bevel gear	螺旋伞齿轮	1	

2200-000 Motor Assembly



2200-000 Motor Assembly

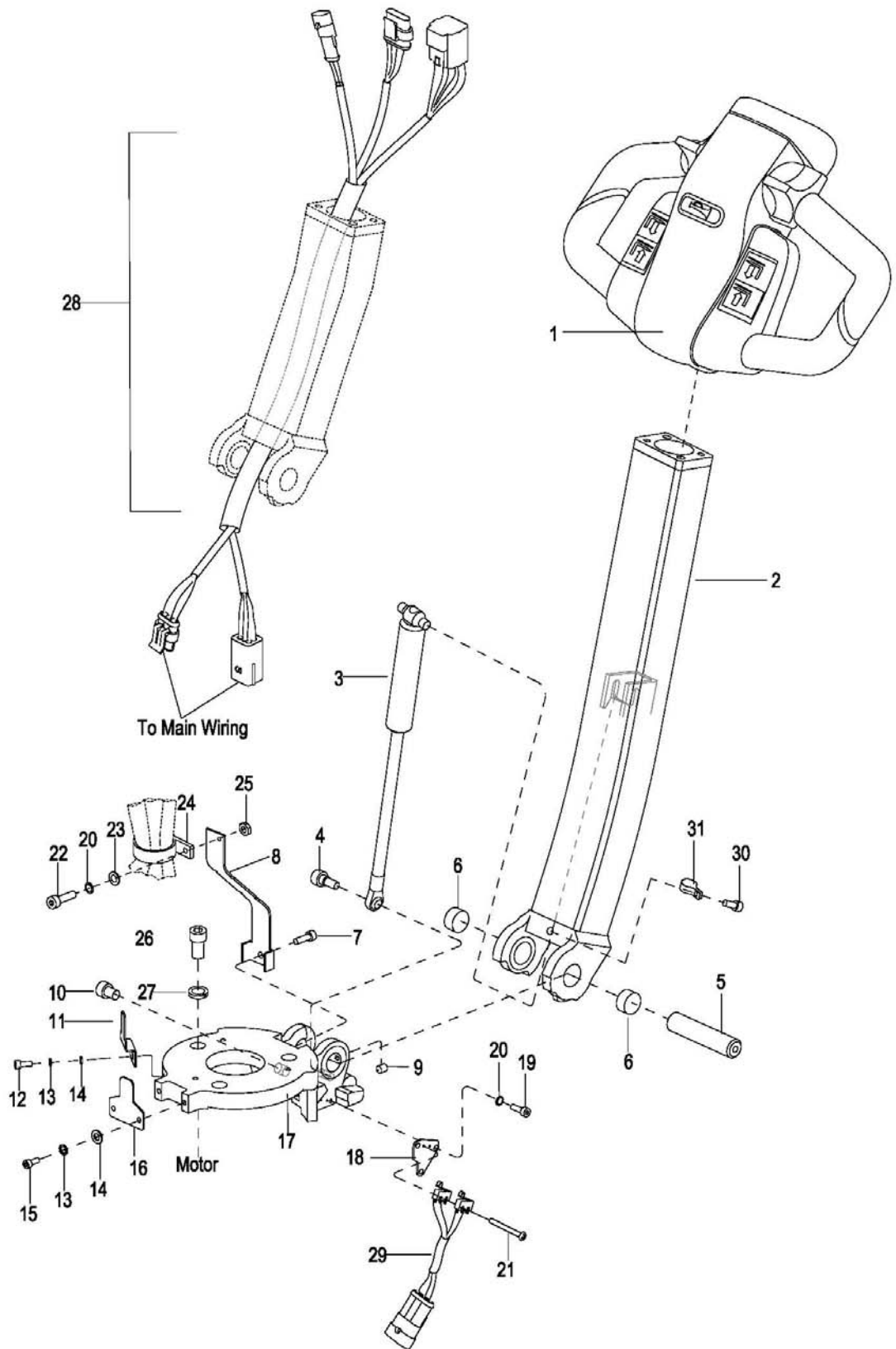
电机总成

Index	Part No.	Part Name		No.	Applied Date	Remark
序号	零件编号	零件名称		数量	适用日期	备注
1	0000-000293-00	Snap Ring For Shaft	卡簧	2		
2	0000-000226-00	Key	平键	1		
3	1120-220001-00	Terminal Block	电缆座	1		
4	0000-000206-00	Lockwasher ø5	弹垫	17		
5	0000-000117-00	Screw M5x10	螺钉	2		
6	0000-000166-00	Nut M6	螺母	6		
7	0000-000056-00	Lockwasher ø6	弹垫	6		
8	1120-220002-00	Bearing	轴承	1		
9	0000-000204-00	Key	月牙键	1		
10	0000-000409-00	O-Ring ø63x3.55	O型圈	1		
11	0000-000436-00	Nut M12x1.5	螺母	1		
12	0000-000323-00	Screw M5x16	螺钉	14		



**3000**  
**Operating Control System**  
操作系统

3000-000 Operating Control System



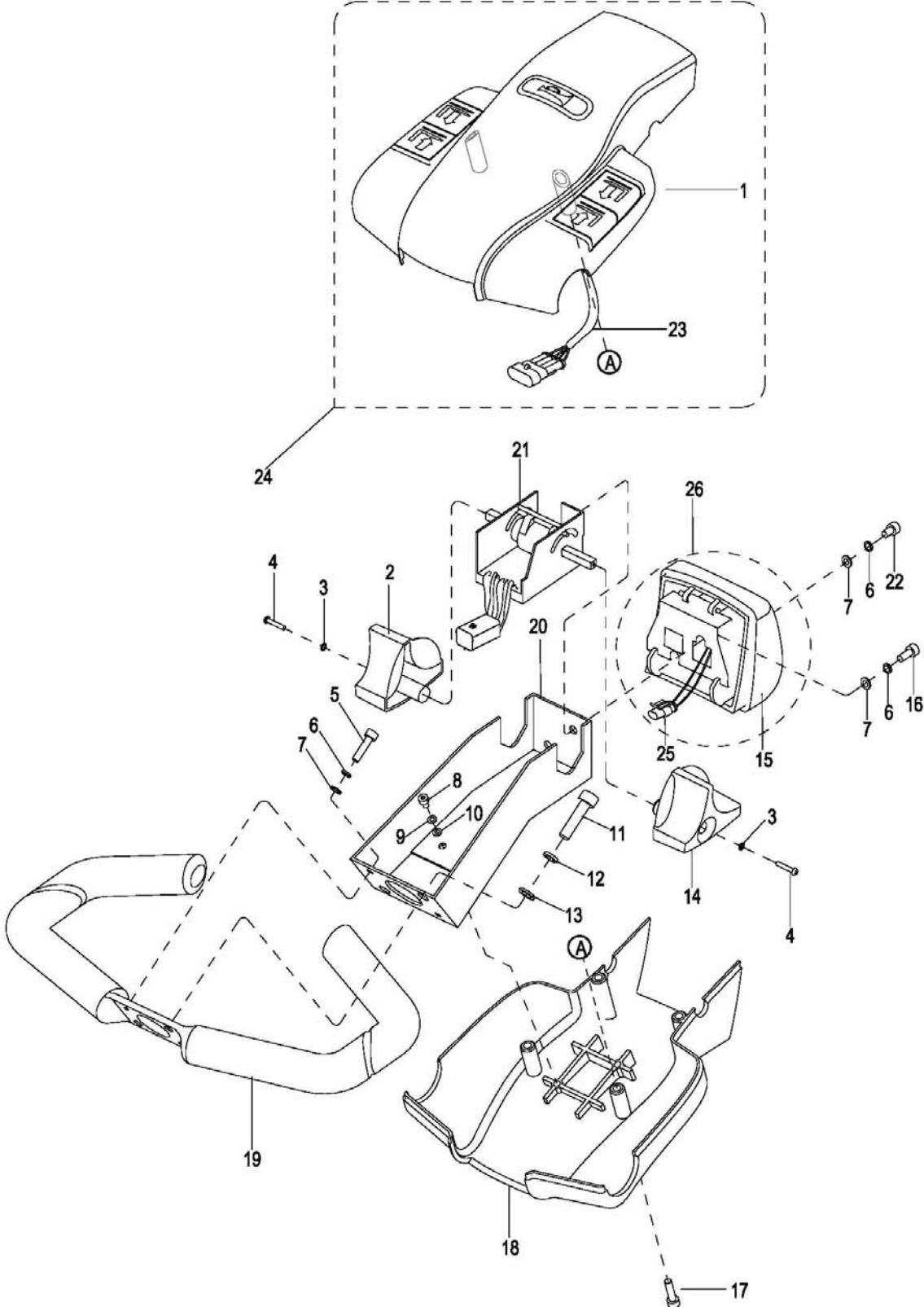


## 3000-000 Operating Control System

## 操作系统

Index	Part No.	Part Name	No.	Applied Date	Remark
序号	零件编号	零件名称	数量	适用日期	备注
1	1120-340000-00-	Control Pod Assembly	1		手柄头总成
2	1120-330000-0A	Control Handle Assembly	1		手柄方管总成
3	1120-320000-00	Gas Spring	1		气弹簧
4	0000-000322-00	Screw M8x25	1		螺钉
5	1120-300003-00	Shaft	1		销轴
6	0000-000029-00	Bushing	2		轴套
7	0000-000032-00	Screw M6x25	1		螺钉
8	1120-300005-00	Bracket	1		线束保护板
9	0000-000016-00	Screw M6x8	1		螺钉
10	0000-000030-00	Screw M10x16	1		螺钉
11	1120-300007-00	Bracket	1		插板
12	0000-000117-00	Screw M5x10	1		螺钉
13	0000-000206-00	Lockwasher ø5	3		弹垫
14	0000-000390-00	Flatwasher ø5	2		平垫
15	0000-000004-00	Screw M5x12	2		螺钉
16	1120-300004-00	Fixed Plate	1		电缆保护板
17	1120-300001-0A	Brake Bracket	1		制动底座
18	1120-300006-00	Spacer	1		微动开关板
19	0000-000088-00	Screw M4x8	2		螺钉
20	0000-000122-00	Lockwasher ø4	3		弹垫
21	0000-000377-00	Screw M2x20	2		螺钉
22	0000-000378-00	Screw M4x16	1		螺钉
23	0000-000702-00	Flatwasher ø4	1		平垫
24	0000-000491-00	Harness Clamp	1		线箍
25	0000-000209-00	Nut M4	1		螺母
26	0000-000109-00	Screw M8x16	3		螺钉
27	0000-000159-00	Lockwasher ø8	3		弹垫
28	2112-520004-0C	Wire Harness Assembly	1		弯管线束总成
29	01 2112-520003-0C-	Inching Switch	1	-072012	互锁开关、减速开关
	02 2112-520003-0C	Inching Switch	1	072012-	互锁开关、减速开关
30	0000-000010-00	Screw M5x6	1		螺钉
31	0000-000490-00	Harness Clamp	1		线夹

3100-000 Control Pod Assembly

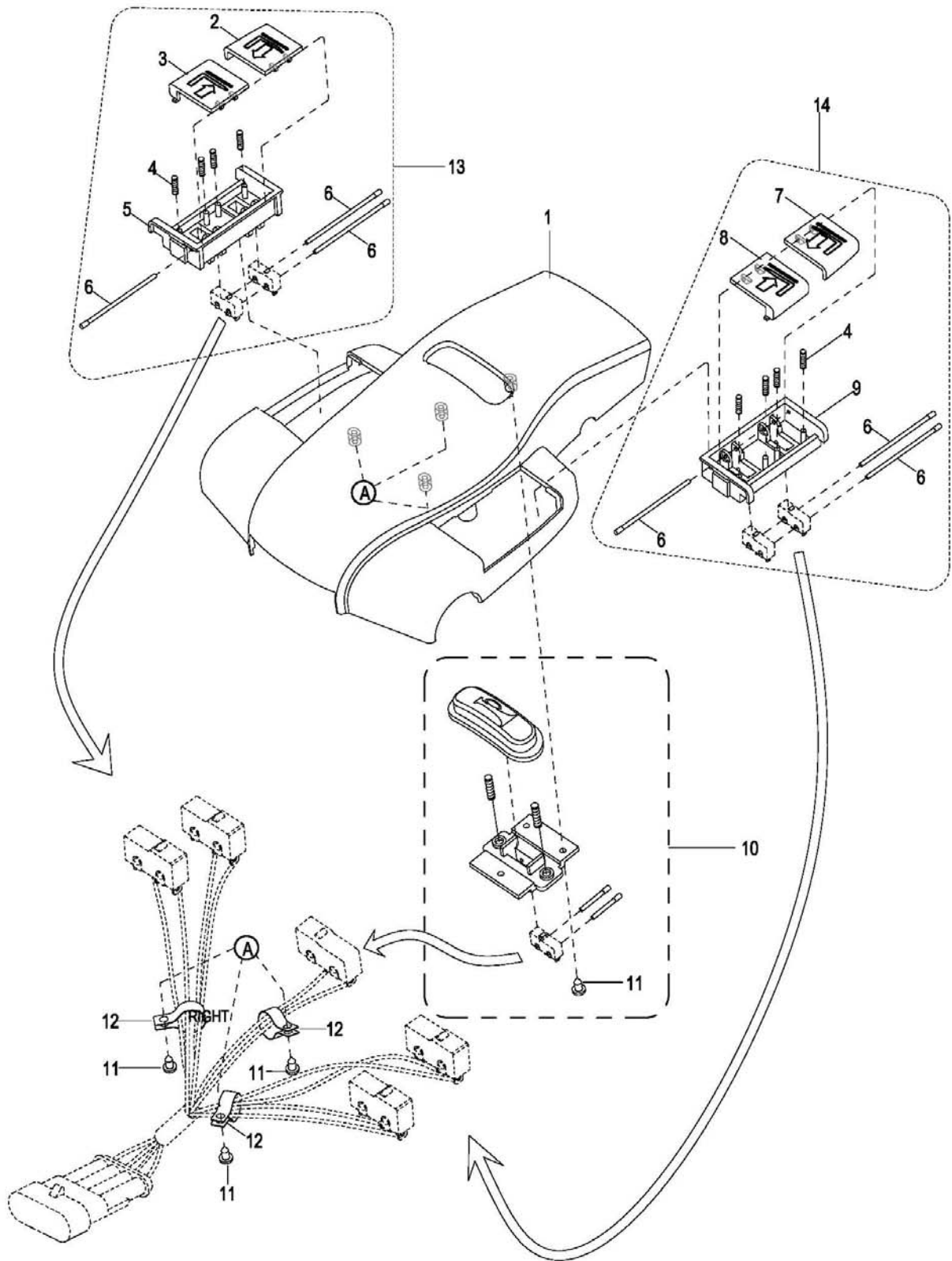


### 3100-000 Control Pod Assembly

#### 操作手柄头总成

Index	Part No.	Part Name	No.	Applied Date	Remark
序号	零件编号	零件名称	数量	适用日期	备注
1	1120-342000-00	Cap Assembly See Fig 3110-000	1		Without Wire
2	1120-340005-00	Travelling Knob R	1		
3	0000-000038-00	Lockwasher $\varnothing 3$	2		
4	0000-000037-00	Screw M3x12	2		
5	0000-000004-00	Screw M5x12	2		
6	0000-000206-00	Lockwasher $\varnothing 5$	4		
7	0000-000002-00	Flatwasher $\varnothing 5$	4		
8	0000-000088-00	Screw M4x8	2		
9	0000-000122-00	Lockwasher $\varnothing 4$	2		
10	0000-000005-00	Flatwasher $\varnothing 4$	2		
11	0000-000322-00	Screw M8x25	2		
12	0000-000159-00	Lockwasher $\varnothing 8$	2		
13	0000-000176-00	Flatwasher $\varnothing 8$	2		
14	1120-340003-00	Travelling Knob L	1		
15	1120-343000-00	Button Reverser Cover	1		Without Wire
16	0000-000004-00	Screw M5x12	2		
17	0000-000035-00	Screw M5x20	4		
18	1120-340002-00	Cover	1		
19	1120-341000-00	Gripe	1		
20	1120-340001-00	Pod	1		
21	1220-520008-0C	Accelerator Assembly	1		
22	0000-000010-00	Screw M5x6	1		
23	1220-520006-0C	Buttons Assembly	1		
24	1120-342000-00-	Cap Assembly	1		With wire
25	1220-520005-0C	Reversing Switch Wire	1		
26	1120-343000-00-	Reversing Switch Assembly	1		With wire

3110-000 Upper Cover Assembly

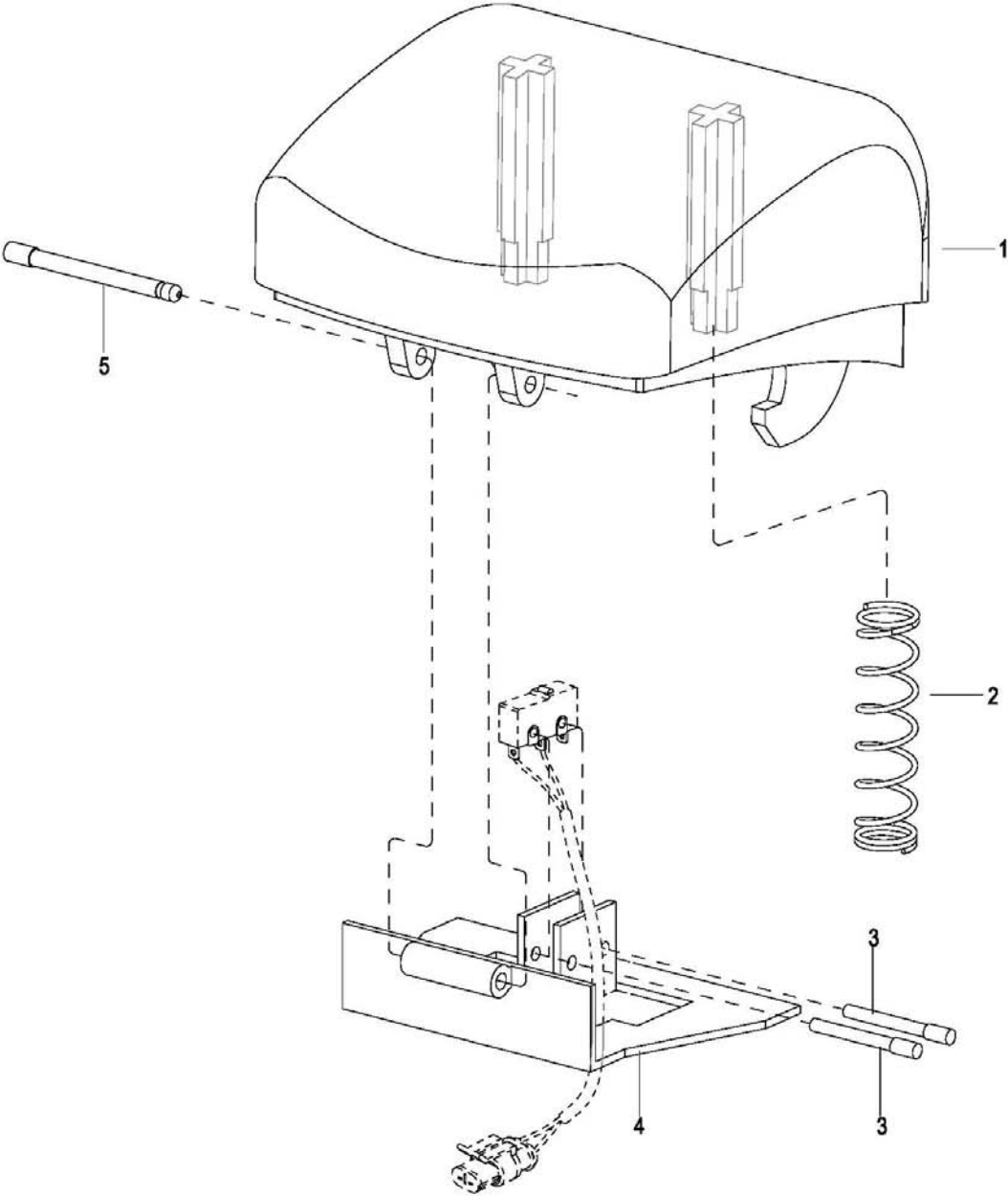


### 3110-000 Upper Cover Assembly

#### 上盖总成

Index	Part No.	Part Name		No.	Applied Date	Remark
序号	零件编号	零件名称		数量	适用日期	备注
1	1120-342001-00	Upper Cover	上盖	1		
2	1120-342203-00	Button For Lowering(R)	右起升按钮	1		
3	1120-342202-00	Button For Lifting(R)	右下降按钮	1		
4	1120-342102-00	Spring	弹簧	8		
5	1120-342201-00	Button Bracket(R)	右开关座	1		
6	1120-342105-00	Pin	销轴	6		
7	1120-342104-00	Button For Lifting(L)	左起升按钮	1		
8	1120-342103-00	Button For Lowering(L)	左下降按钮	1		
9	1120-342101-00	Button Bracket (L)	左开关座	1		
10	1120-342002-00	Horn Button	喇叭按钮	1		
	1120-342005-00	Pin	销轴	2		
	1120-342003-00	Spring	弹簧	2		
	1120-342004-00	Button Bracket	喇叭开关支架	1		
11	0000-000039-00	Screw ST3.5×9.5	螺钉	6		
12	0000-000490-00	Harness Clamp	线夹	3		
13	1120-342200-00	Lift And Lower Box(R) Assembly	右升降开关盒总成	1		
14	1120-342100-00	Lift And Lower Box(L) Assembly	左升降开关盒总成	1		

3120-000 Button Reverser Assembly



**3120-000 Button Reverser Assembly****紧急反向开关总成**

<b>Index</b>	<b>Part No.</b>	<b>Part Name</b>	<b>No.</b>	<b>Applied Date</b>	<b>Remark</b>
序号	零件编号	零件名称	数量	适用日期	备注
1	1120-343002-00	Cover	1		紧急反向开关盖
2	1120-343003-00	Spring	2		弹簧
3	1120-342005-00	Pin	2		销轴
4	1120-343001-0A	Bracket	1		紧急反向开关板
5	1120-343004-00	Pin	1		销



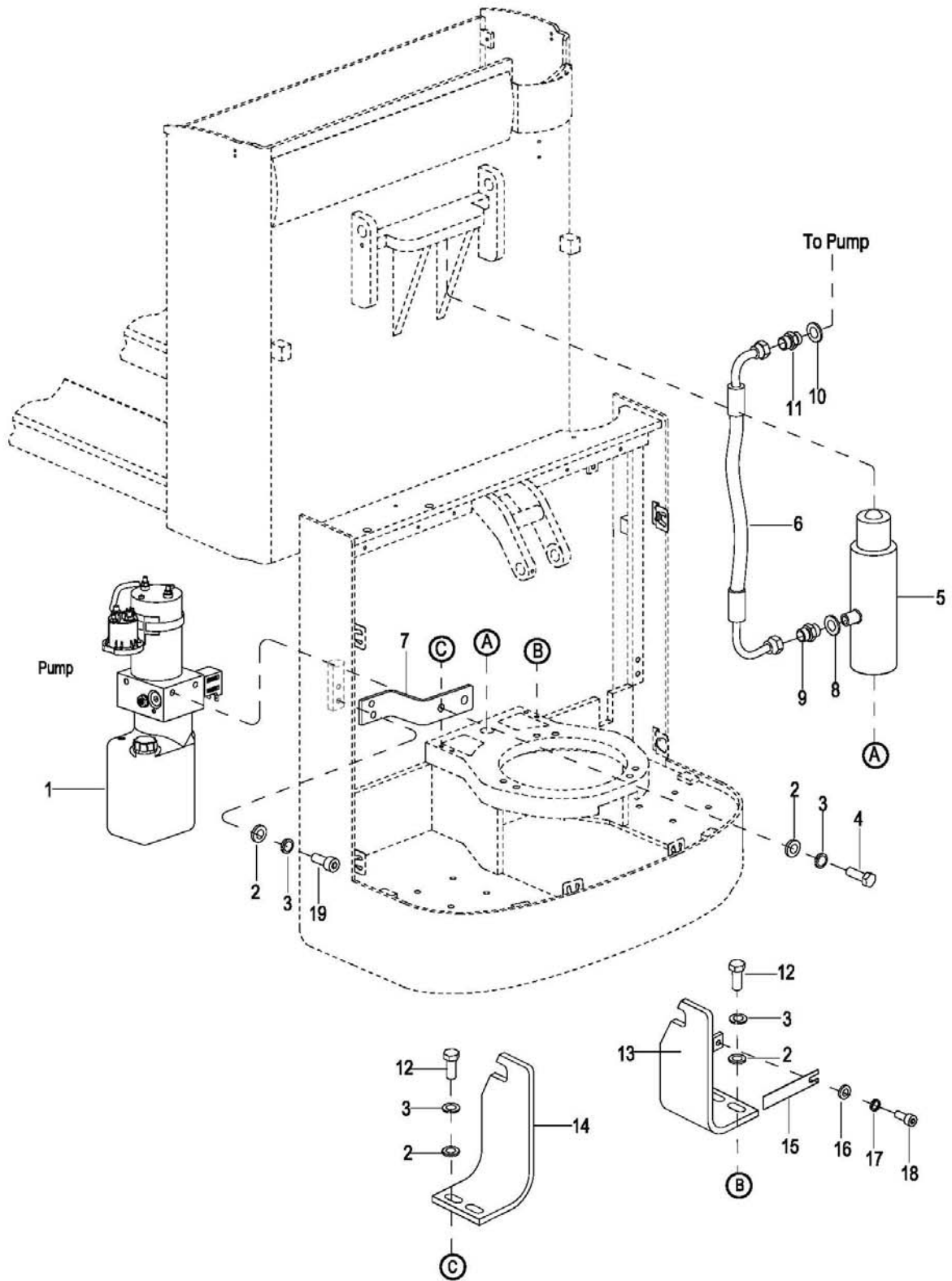


**4000**

**Hydraulic System**

液压系统

4000-000 Hydraulic System

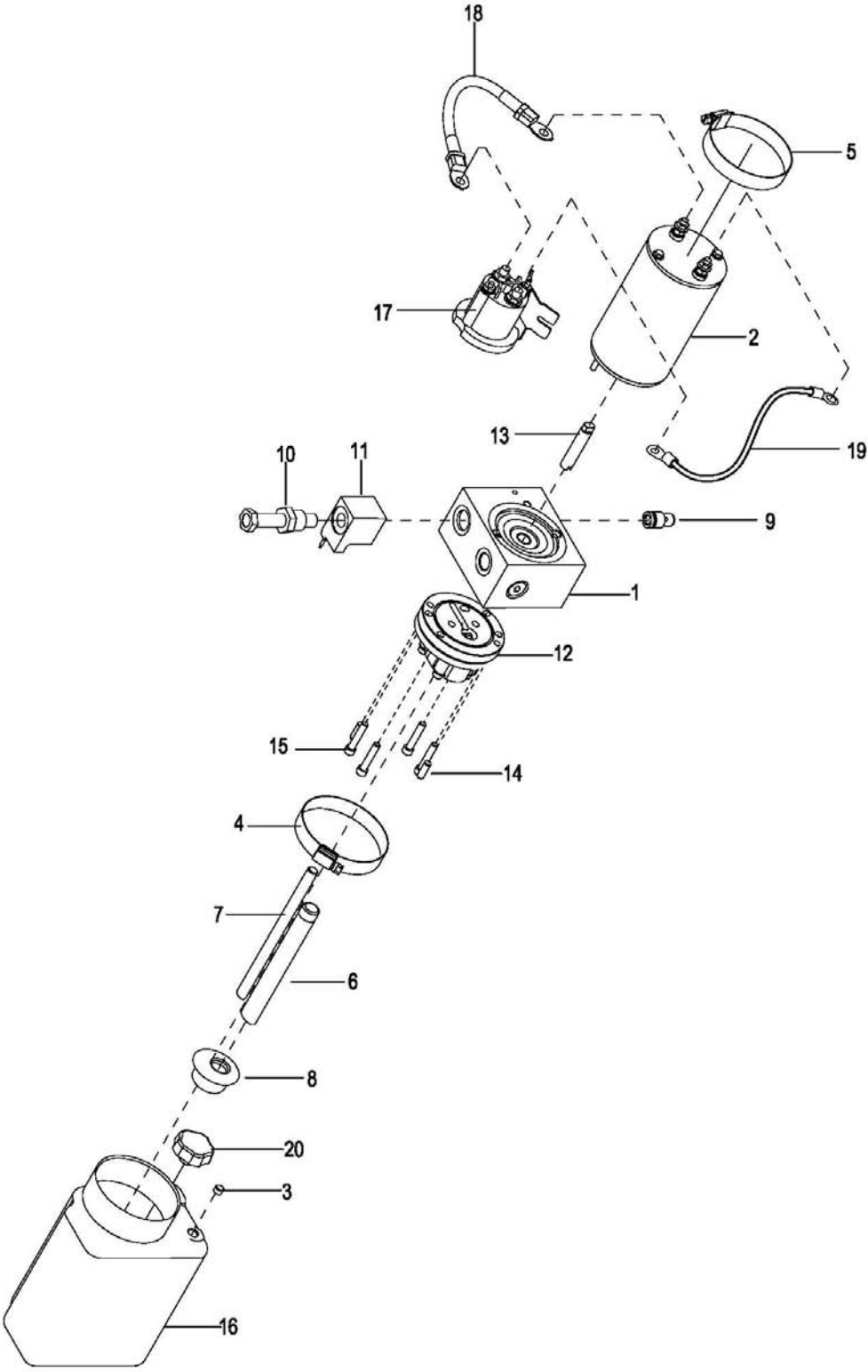


### 4000-000 Hydraulic System

#### 液压系统

Index	Part No.	Part Name	No.	Applied Date	Remark
序号	零件编号	零件名称	数量	适用日期	备注
1	1120-420000-00	Hydraulic Pump Assembly See Fig	1		液压站总成 见图 4100-000
2	0000-000176-00	Flatwasher ø8	8		平垫
3	0000-000159-00	Lockwasher ø8	8		弹垫
4	0000-000255-00	Bolt M8x20	2		螺栓
5	1120-410000-00	Cylinder See Fig 4200-000	1		液压油缸总成 见图
6	1120-400001-00	Hose	1		高压胶管
7	1120-400002-00	Setting Plate	1		液压站安装板
8	0000-000634-00	Washer ø18	1		组合垫圈
9	2701-141400-00	Union M14×1.5-M14×1.5	1		直通接头
10	0000-000514-00	Washer ø14	1		垫圈
11	2702-381400-00	Union G3/8-M14×1.5	1		直通接头
12	0000-000372-00	Bolt M8x40	4		螺栓
13	01 1120-100006-00	Cylinder Baffle R	1	-042511	右油缸挡板
	02 1120-180000-00	Cylinder Baffle R	1	042511-	右油缸挡板
14	1120-100002-00	Cylinder Baffle L	1		左油缸挡板
15	01 1120-100001-00	Spring Plate	1		弹簧板
	02 1120-100001-0A	Spring Plate	1		弹簧板
16	0000-000390-00	Flatwasher ø5	1		平垫
17	0000-000206-00	Lockwasher ø5	1		弹垫
18	0000-000004-00	Screw M5x12	1		螺钉
19	0000-000321-00	Screw M8x20	2		螺钉

4100-000 Hydraulic Pump Assembly

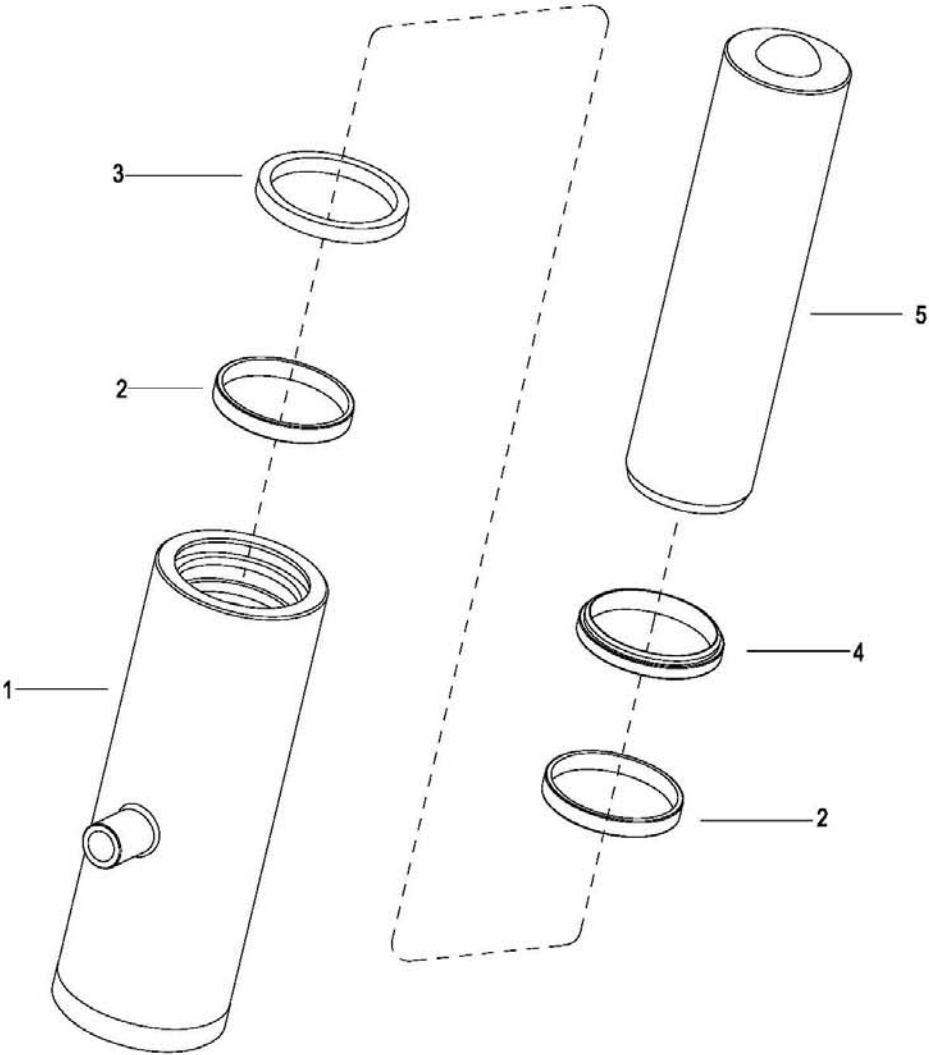


### 4100-000 Hydraulic Pump Assembly

#### 液压站总成

Index	Part No.	Part Name		No.	Applied Date	Remark
序号	零件编号	零件名称		数量	适用日期	备注
1	1120-420001-00	Adapter	阀总成	1		
2	1120-420002-00	Motor	马达	1		
3	1120-420003-00	Plug	插销	1		
4	1120-420004-00	Clamp	夹圈	1		
5	1120-420005-00	Clamp	夹圈	1		
6	1120-420006-00	Tube	管	1		
7	1120-420007-00	Tube	管	1		
8	1120-420008-00	Filter	过滤器	1		
9	1120-420009-00	Safety Valve	安全阀	1		
10	1120-420010-00	Release Valve	阀	1		
11	1120-420011-00	Solenoid Valve	螺线管阀	1		
12	1120-420012-00	Pump	泵	1		
13	1120-420013-00	Shaft	销轴	1		
14	1120-420014-00	Pin	销	2		
15	1120-420015-00	Screw	螺钉	4		
16	1120-420016-00	Reservoir	油箱	1		
17	1120-420017-00	Contactactor	接触器	1		
18	1120-420018-00	Cable	电缆	1		
19	1120-420019-00	Wire	导线	1		
20	1120-420020-00	Breather	旋盖	1		

4200-000 Lifting Cylinder



4200-000 Lifting Cylinder

起升油缸

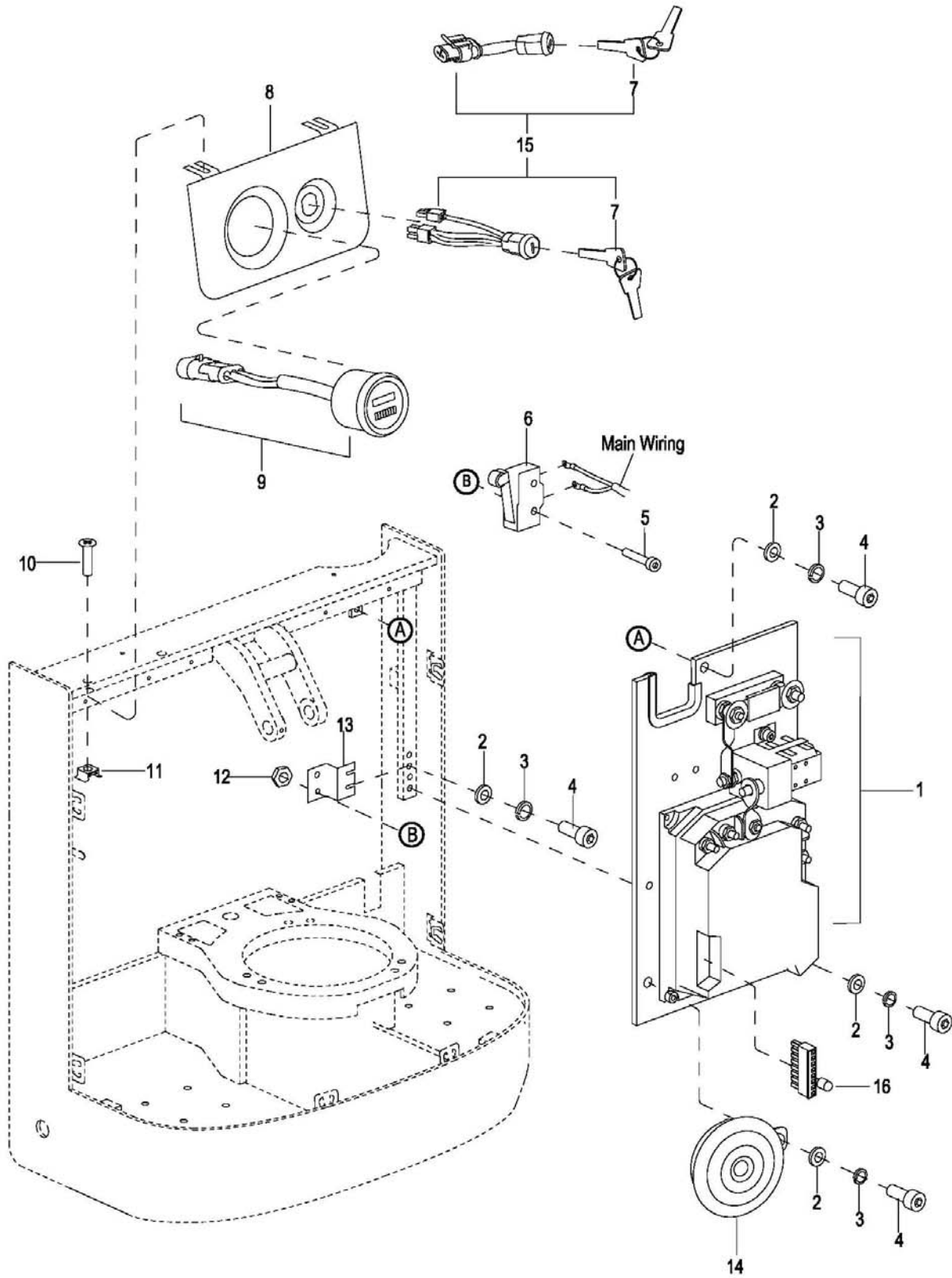
Index	Part No.	Part Name		No.	Applied Date	Remark
序号	零件编号	零件名称		数量	适用日期	备注
1	1120-411000-00	Cylinder	缸筒	1		
2	1120-410002-00	Ring Back Up $\varnothing 9.7 \times 2.5$	支撑环	2		
3	0000-000046-00	Rod Packing $\varnothing 55 \times 65 \times 6$	Yx 密封圈	1		
4	0000-000045-00	Ring Wiper $\varnothing 55 \times 63 \times 5-6.5$	防尘圈	1		
5	1120-410001-00	Piston Rod	活塞杆	1		
KI	1120-SK	Seal Kit for Lifting Cylinder	起升油缸修理包	1		
T		(include item 3,4 )	(包含序号 3, 4)			





**5000**  
**Electrical System**  
电器系统

5000-000 Electrical System

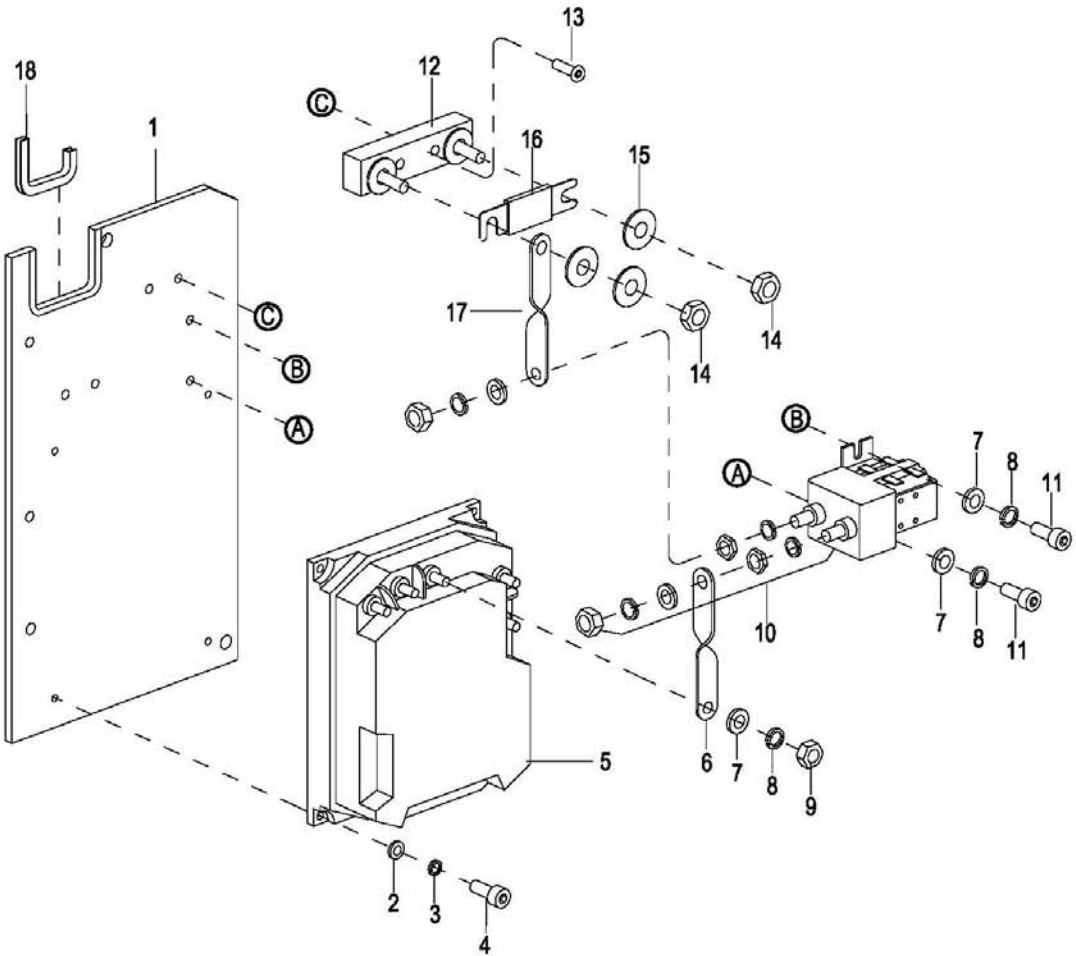


## 5000-000 Electrical System

## 电器系统

Index	Part No.	Part Name		No.	Applied Date	Remark
序号	零件编号	零件名称		数量	适用日期	备注
1	See Fig 5100-000	Controller Board Assembly	控制板总成 见图 5100-000	1		
2	0000-000194-00	Flatwasher ø8	平垫	5		
3	0000-000159-00	Lockwasher ø8	弹垫	5		
4	01 0000-000003-00	Screw M8x25	螺钉	5		Old
	02 0000-000109-00	Screw M8x16	螺钉	5		New
5	0000-000208-00	Screw M4x25	螺钉	2		
6	1120-500006-00	Lifting Limit Switch	起升限位开关	1		
7	01 1115-500008-00	3 Way Switch Key	三相开关钥匙	2		
	02 1120-500016-00	2 Way Switch Key	两相开关钥匙	2	080111-	
8	1120-500002-00	Bracket	电量表板	1		
9	01 1220-520007-0B	Meter Assembly 4 Pin	4 针 电量表总成	1		
	02 1220-520007-0C	Meter Assembly 3 Pin	3 针 电量表总成	1	-041512	
	03 1220-520007-0D	Meter Assembly 3 Pin	3 针 电量表总成	1	041512-	
10	0000-000126-00	Screw M6x16	螺钉	2		
11	1120-500013-00	Nut M6	螺母	2		
12	0000-000209-00	Nut M4	螺母	3		
13	1120-500008-00	Bracket	限位开关板	1		
14	1120-500003-00	Horn	喇叭	1		
15	01 1120-500011-00	Power Switch Assembly	钥匙开关总成	1		Old
	02 1120-500015-00	Power Switch Assembly	钥匙开关总成	1		Old
	03 1120-520002-0C	3 Way Switch Assembly	钥匙三相开关总成	1		
	04 1220-520002-0C	2 Way Switch Assembly	钥匙两相开关总成	1	080111-	
16	1120-540004-00	Alarm lamp	报警灯	1	050112-	

5100-000 Contactor Panel Assembly

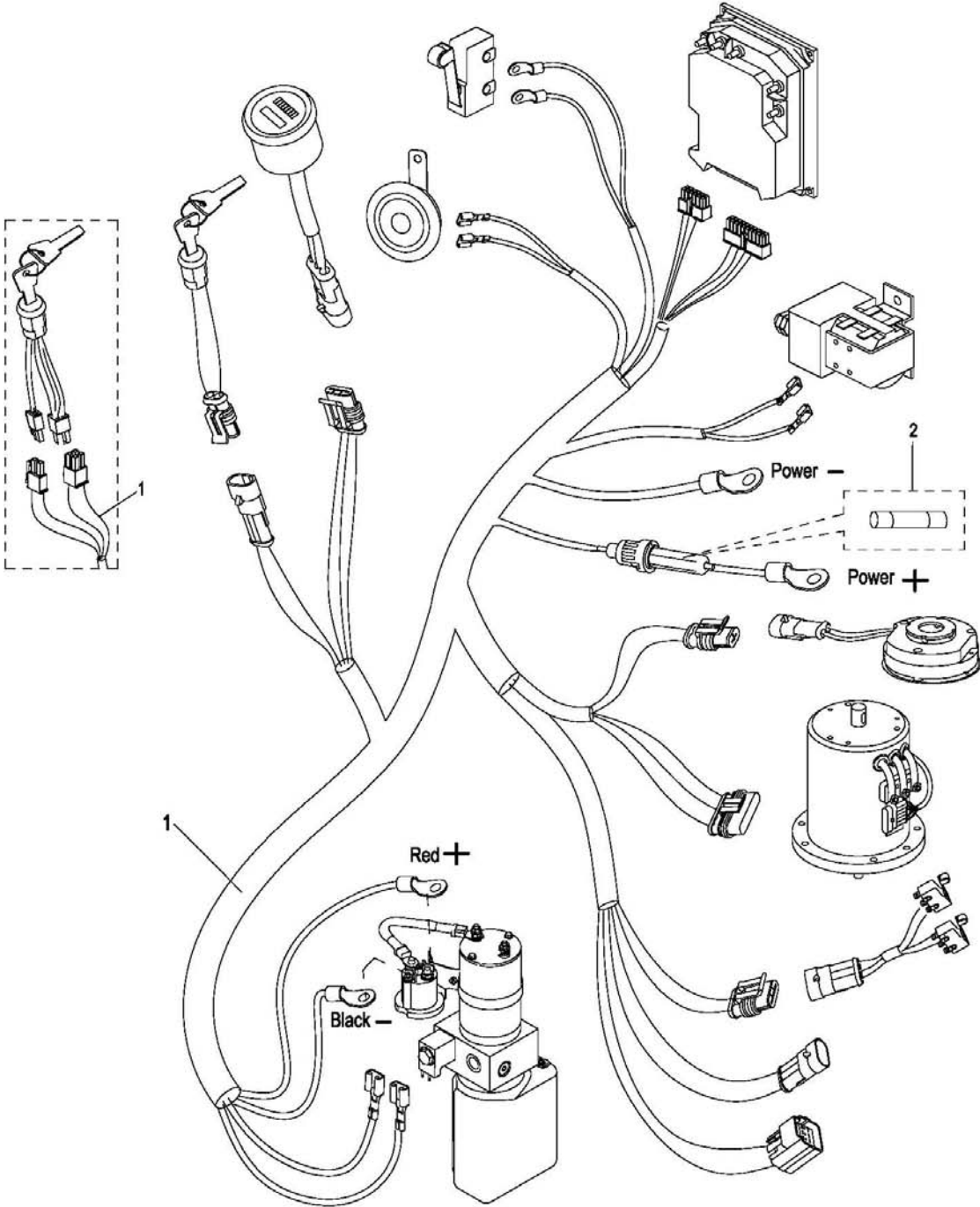


### 5110-000 Contactor Panel Assembly

#### 电器安装板总成

Index	Part No.	Part Name	No.	Applied Date	Remark
序号	零件编号	零件名称	数量	适用日期	备注
1	1120-500001-00	Board	1		电器安装板
2	0000-000128-00	Flatwasher ø5	4		平垫
3	0000-000206-00	Lockwasher ø5	4		弹垫
4	0000-000004-00	Screw M5×12	4		螺钉
5	1120-500004-00	Controller	1		控制器
6	1120-530007-00	Copper Conductor II	1		铜导板 II
7	0000-000123-00	Flatwasher ø6	7		平垫
8	0000-000056-00	Lockwasher ø6	7		弹垫
9	0000-000166-00	Nut M6	5		螺母
10	1120-500005-00	Contactoer	1		接触器
11	0000-000077-00	Screw M6×12	2		螺钉
12	1120-540001-00-	Stand	1		200A 保险丝座
13	0000-000074-00	Screw M6×20	2		螺钉
14	0000-000196-00	Nut M8	2		螺母
15	0000-000210-00	Flatwasher ø8	3		平垫
16	1120-540002-00	Fuse	1		200A 保险丝
17	1120-530006-00	Copper Conductor I	1		铜导板 I
18	1120-540003-00	Insertion	1		保护套

5200-000 Wire Harness I

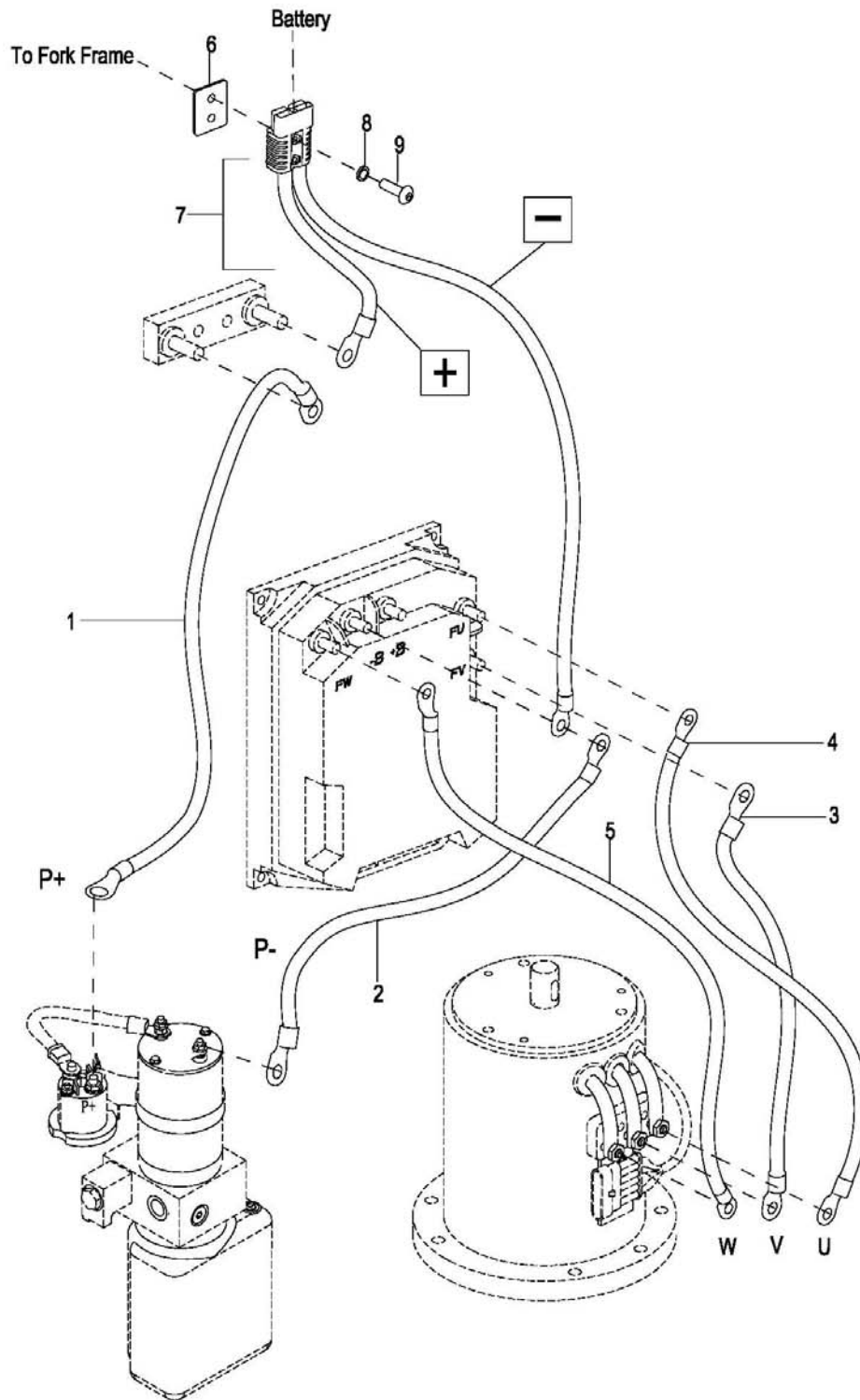


5200-000 Wire Harness I

线束 I

Index	Part No.	Part Name	No.	Applied Date	Remark
序号	零件编号	零件名称	数量	适用日期	备注
1	01	1120-520001-00 Main Wire Harness	1		Old
	02	1120-520001-0B Main Wire Harness	1		Old
	03	1120-520001-0C With Low Power Protection Main Wire	1		New
	04	1120-520001-0D With Low Power Protection Main Wire	1	081511-	
2		1120-500010-00 Fuse 10A	1		

5300-000 Wire Harness II





5300-000 Wire Harness II

线束 II

Index	Part No.	Part Name		No.	Applied Date	Remark
序号	零件编号	零件名称		数量	适用日期	备注
1	1120-530009-00	Pump Power Line +	液压站正线	1		
2	1120-530008-00	Pump Power Line -	液压站负线	1		
3	1120-530003-00	Motor Line V	电动机 V 线	1		
4	1120-530004-00	Motor Line U	电动机 U 线	1		
5	1120-530005-00	Motor Line W	电动机 W 线	1		
6	1120-112008-00	Plate	电缆接插件衬板	1		
7	1120-531000-00	Connector Battery Gray Assembly	电缆接插件总成	1		
8	0000-000056-00	Lockwasher ø6	弹垫	4		
9	0000-000170-00	Screw M6x30	螺钉	2		

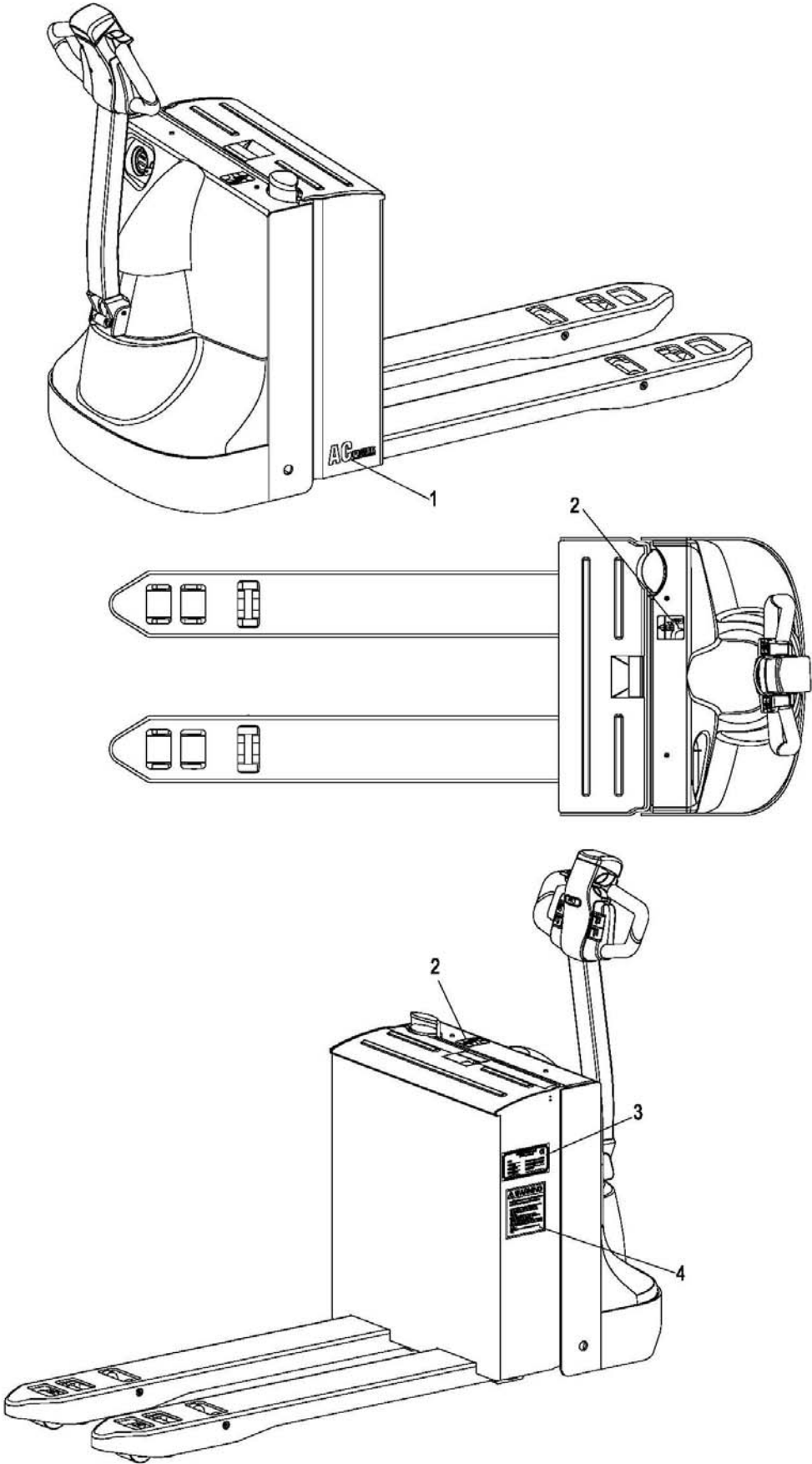


**6000**

**Attached Drawing**

附图

6100-000 Nameplate



**6100-000 Nameplate****铭牌**

<b>Index</b>	<b>Part No.</b>	<b>Part Name</b>		<b>No.</b>	<b>Applied Date</b>	<b>Remark</b>
<b>序号</b>	<b>零件编号</b>	<b>零件名称</b>		<b>数量</b>	<b>适用日期</b>	<b>备注</b>
1	1120-600001-00	AC Power Logo	交流标识	1		
2	1120-600002-00	Decal Charge Hook-Up Caution	连接充电注意事项贴纸	1		
3	1120-600004-00	Plate Data	铭牌	1		
4	1120-600005-00	Decal Operator Warning	操作警告贴纸	1		