

Fig. 9 Cylinder assembly  
油缸总成

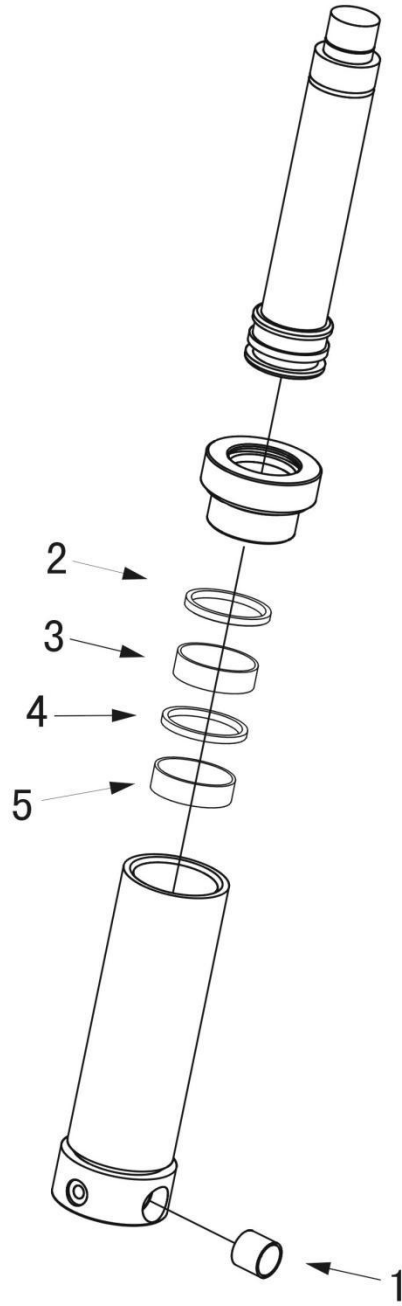


Fig. 9 Cylinder assembly  
油缸总成

ITEM #	PART#	NAME	#FOR ASSY.
1	6000812001	Composite bearing 复合轴承	2
2	1700600004	Dust ring 防尘圈	1
3	1700600005	Supporting tach 支撑环	1
4	1700600007	Seal washer 密封圈	1
5	1700600006	Supporting tach 支撑环	1

Fig. 10 Frame  
机架总成

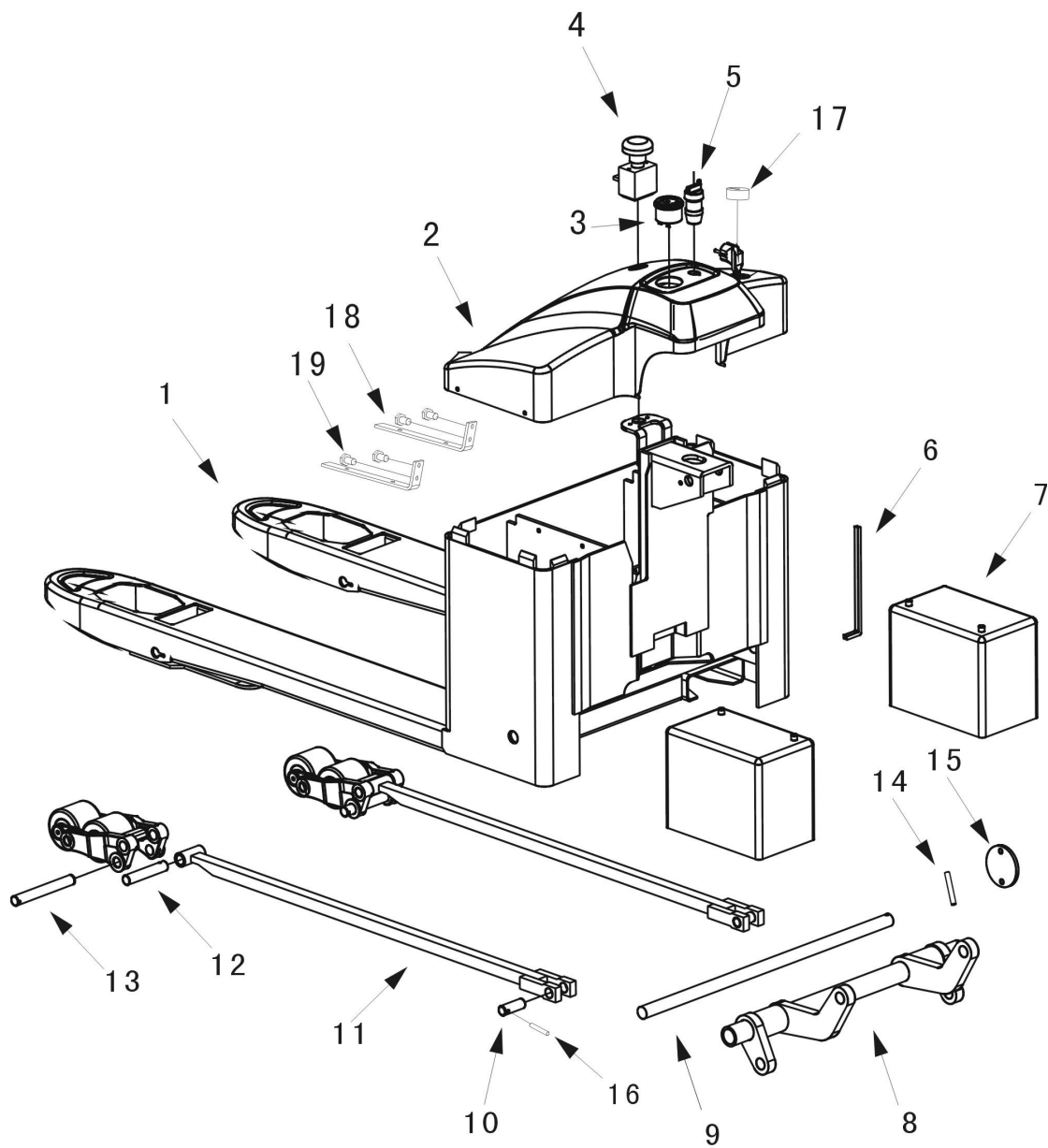


Fig.10 Frame  
机架总成

ITEM #	PART#	NAME		#FOR ASSY.
1	1700724002	Frame (685x1150)	机架	1
1	1700724003	Frame (685x1200)	机架	1
1	1700724004	Frame (550x1200)	机架	1
1	1700724005	Frame (600x1150)	机架	1
1	1700724006	Frame (650x1150)	机架	1
1	1700724007	Frame (600x1200)	机架	1
1	1700724008	Frame (650x1200)	机架	1
1	1700724009	Frame (550x1150)	机架	1
1	1700724010	Frame (685x830)	机架	1
1	1700724011	Frame (550x1100)	机架	1
1	1700724012	Frame (600x830)	机架	1
1	1700724013	Frame (685x650)	机架	1
1	1700724014	Frame (685x900)	机架	1
1	1700724015	Frame (550x850)	机架	1
1	1700724016	Frame (550x1000)	机架	1
1	1700724017	Frame (650x900)	机架	1
1	1700724018	Frame (685x1000)	机架	1
2	1700709012	Shell	罩壳	1
3	2001116003	Power meter	电量表	1
4	2000407001	Emergency switch	紧急开关	1
5	1801116001	Key	钥匙	1
6	1700734002	Rubber pad	橡胶垫	1
7	6001100018	Battery	电瓶	2
8	1700202003	A bracket arm	托臂	1
9	1700202004	Shaft	轴	1
10	6000213003	Shaft	轴	2
11	1700202005	Connecting rod	货叉 (1150) 连杆	2
12	1700213004	Shaft	轴	2
13	1700213005	Shaft	轴	2
14	1700236001	Elastic pin	弹性销	1
15	1700711001	Axle cushion	长轴端盖	1
16	4000736001	Elastic pin	弹性销	1
17	1700712001	Power line set	电源线套	1
18	6100702001	Seat	充电支座	2
19	1700731002	Screw	螺钉	4

Fig.10 Frame  
机架总成

ITEM #	PART#	NAME	#FOR ASSY.
11	1700202005	Connecting rod 货叉 (1200) 连杆	2
11	1700202005	Connecting rod 货叉 ( 830 ) 连杆	2
11	1700202005	Connecting rod 货叉 (1100) 连杆	2
11	1700202005	Connecting rod 货叉 (650 ) 连杆	2
11	1700202005	Connecting rod 货叉 (900 ) 连杆	2
11	1700202005	Connecting rod 货叉 (850 ) 连杆	2
11	1700202005	Connecting rod 货叉 (1000) 连杆	2
11	1700202005	Connecting rod 货叉 (1500) 连杆	2

Fig. 11 Balance wheel assembly  
双轮总成

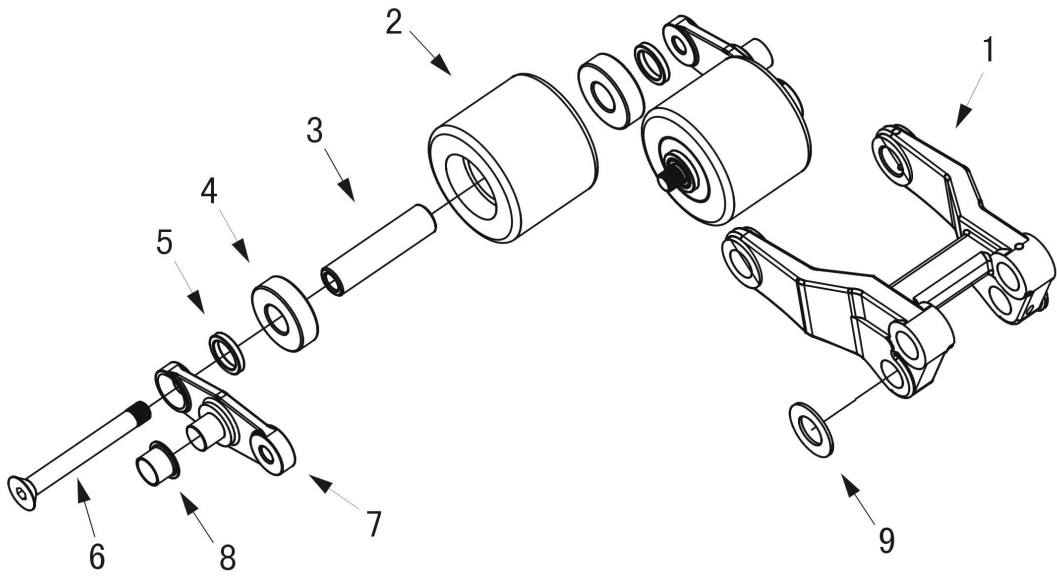


Fig. 11 Balance wheel assembly  
双轮总成

ITEM #	PART#	NAME		#FOR ASSY.
1	1700302005	Wheel fork	轮架	1
2	1700332002	Loading wheel	轮子	2
3	1700314001	Axle sleeve	轴套	2
4	1000320001	Bearing	轴承	4
5	1700312001	The cushion	垫套	4
6	1700325001	Screw	螺钉	2
7	1700302006	Plate	夹板	2
8	6000312003	Bearing	轴承	2
9	4901337001	Washer	垫圈	2

Fig. 12 Single wheel assembly  
单轮总成

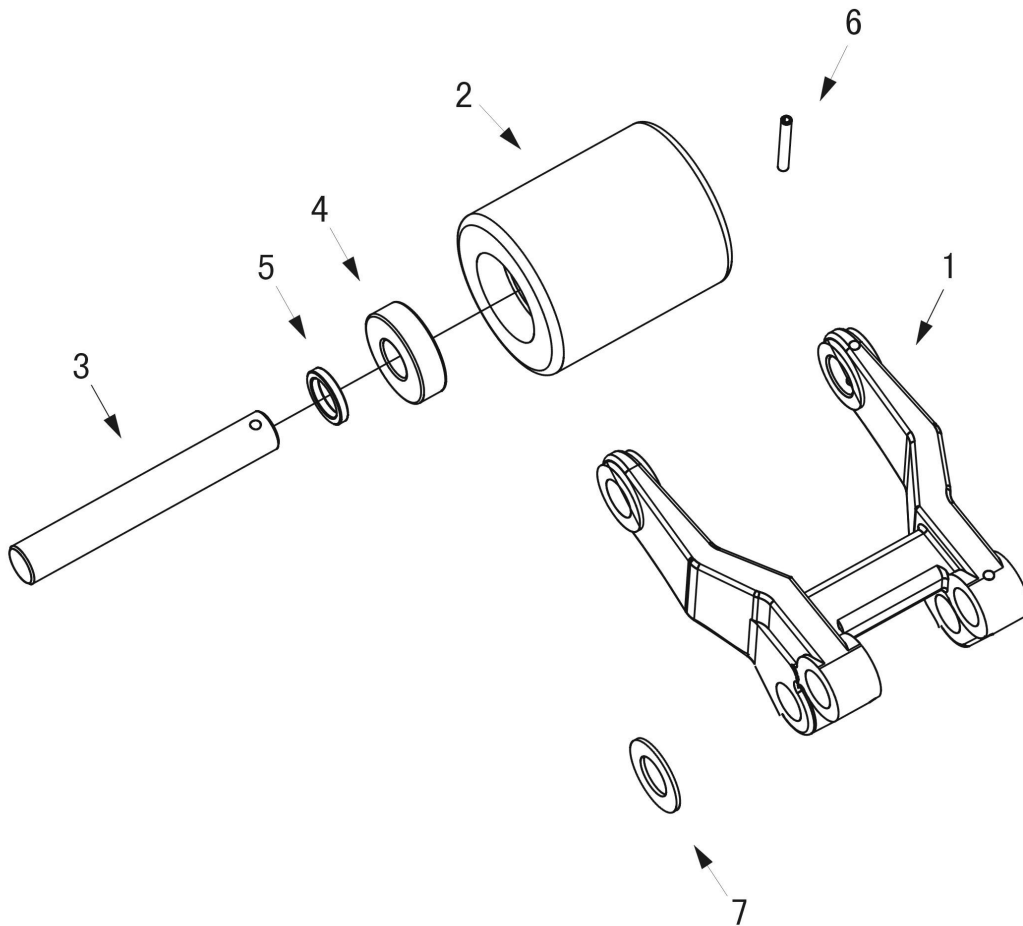




Fig. 12 Single wheel assemblg  
单轮总成

ITEM #	PART#	NAME		#FOR ASSY.
1	1700302005	Wheel fork	轮架	1
2	1700332003	Loading wheel	轮子	1
3	1700313001	Axle sleeve	轴	1
4	1000320001	Bearing	轴承	4
5	1700312001	The cushion	垫套	4
6	1001036001	Elastic pin	弹性销	1
7	4901337001	Washer	垫圈	2

Fig. 13 Electric panel assembly  
配电板总成

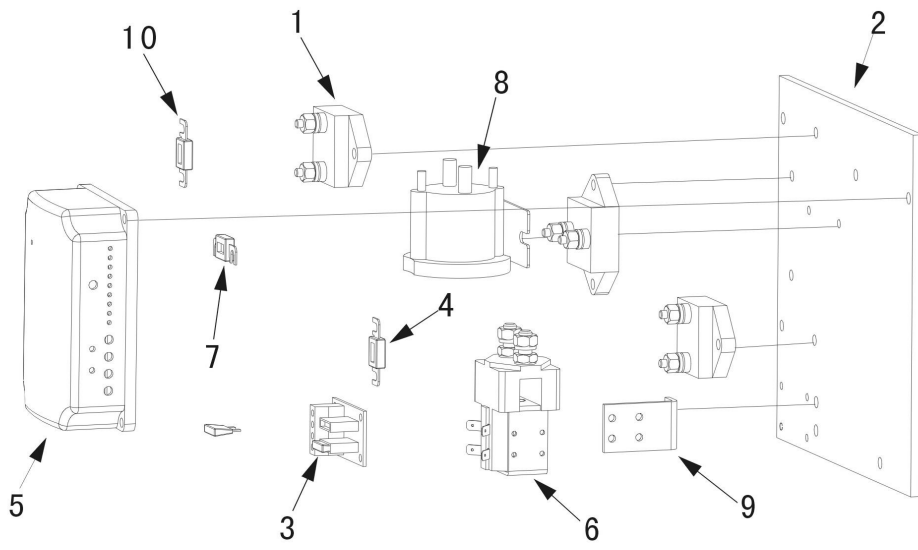


Fig. 13 Electric panel assembly  
配电板总成

ITEM #	PART#	NAME		#FOR ASSY.
1	1000435004	Fuse holder	保险丝座	3
2	1700402002	Install plate	配电板	1
3	1000406005	Circuit board	线路板	1
4	4600506001	Fuse	保险丝	1
5	1700406001	Controller	控制器(带互锁)	1
	1700406003	Controller	控制器(不带互锁)	1
	2000406002	Controller	控制器(柯蒂斯)	1
6	1800306001	Contact	接触器	1
7	1000406006	Fuse	保险丝	2
8	1801106001	Contact	接触器	1
9	6000418004	Install plate	支架	1
10	1700406002	Fuse	保险丝	1

Fig. 14 Bracket assembly  
托架总成

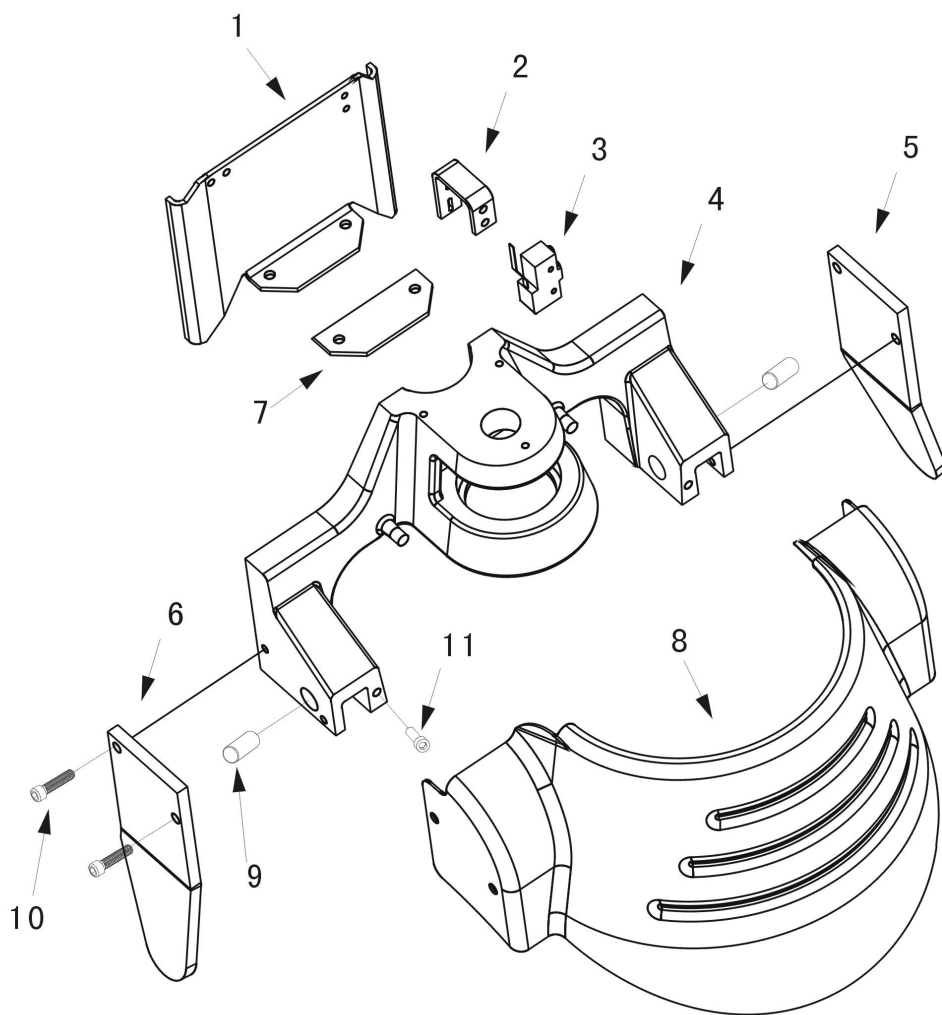


Fig. 14 Bracket assembly  
托架总成

ITEM #	PART#	NAME		#FOR ASSY.
1	1700702003	Line frame	护线架	1
2	1700435002	The switch seat	开关座	1
3	4000400021	The micro switch	微动开关	1
4	1700702004	Bracket	托架	1
5	1700702005	Right bracket	右支撑架	1
6	1700702006	Left bracket	左支撑架	1
7	1700702007	Limiting pad	限位垫	6
8	1700709002	Protective frame	护框	1
9	1001031003	Screw	螺钉	4
10	1700213003	Bracket shaft	托架轴	2
11	1700731001	Screw	螺钉	1

Fig. 15 Battery assembly  
电源总成

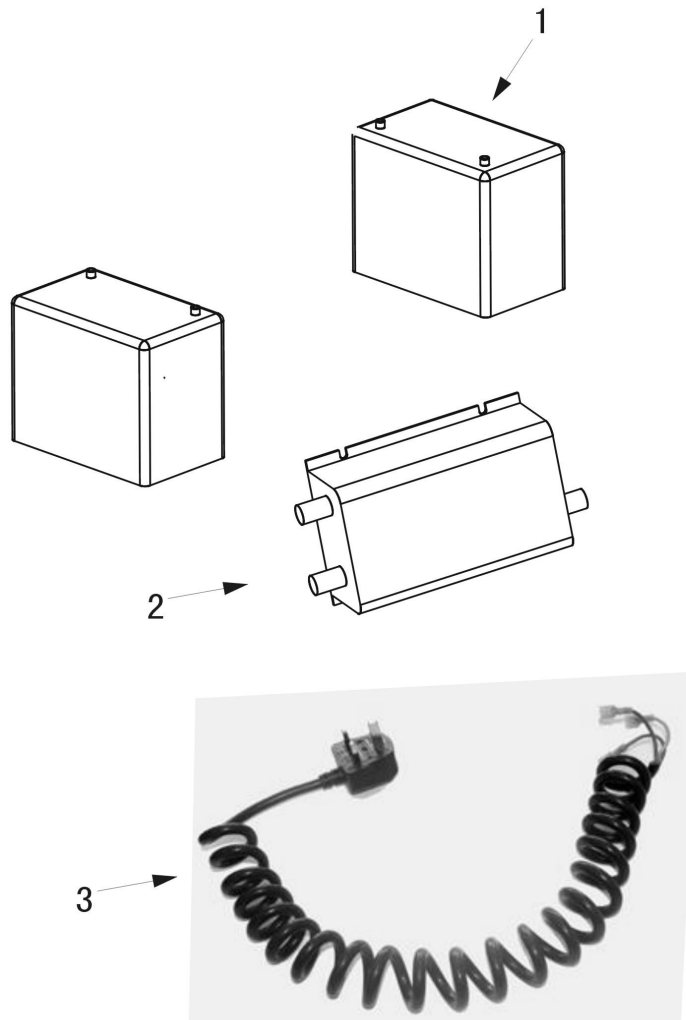


Fig. 15 Battery assembly  
电源总成

ITEM				#FOR
#	PART#	NAME		ASSY.
1	6001100018	Battery (65Ah 12V)	电瓶	2
2	0701100001	Charger (110V/220V/240V )	充电器	1
3	0701100002	Plug line(USA criterion)	美标充电线	1
	0701100003	Plug line(Australia criterion)	澳标充电线	1
	0701100004	Plug line(Eng criterion)	英标充电线	1
	0701100005	Plug line(Europe criterion)	欧标充电线	1
	0701100006	Plug line(Brazil criterion)	巴西标充电线	1