

Fig.1 Steering control system
手把安装总成

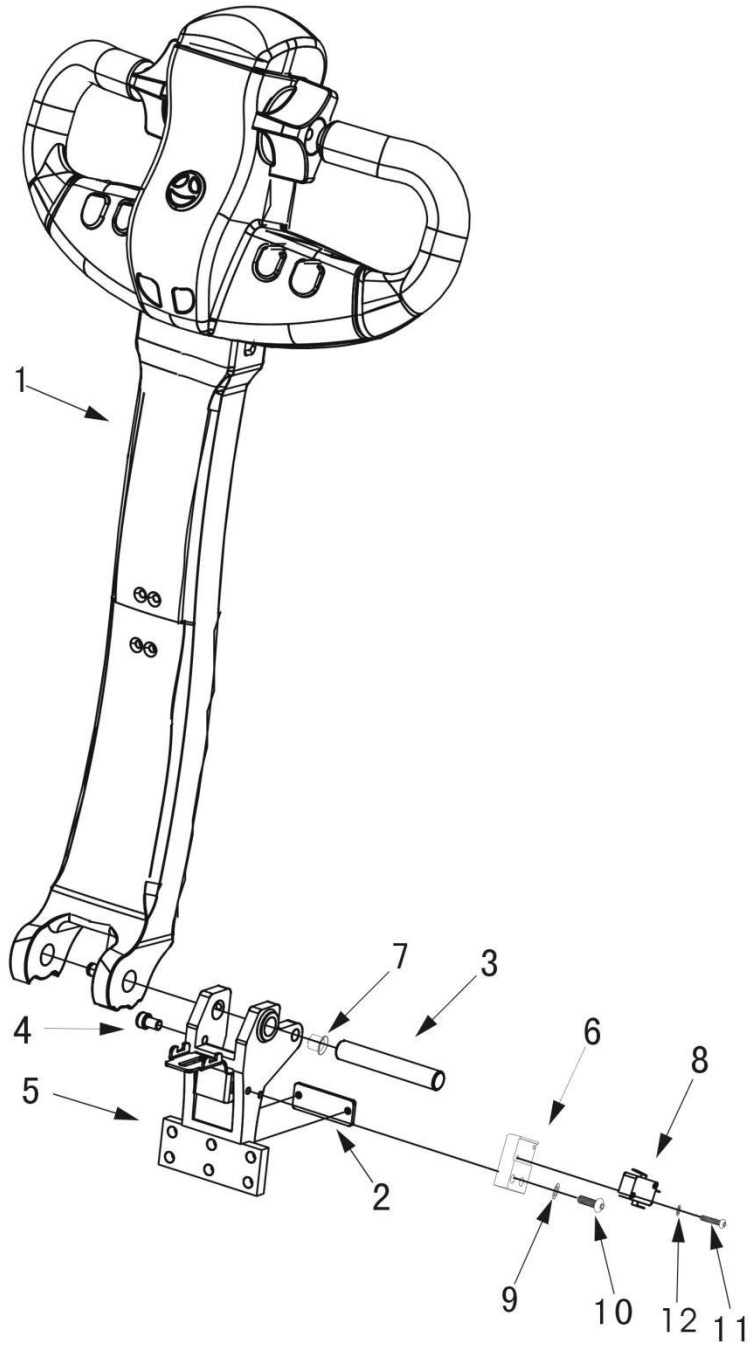


Fig.1 Steering control system
手把安装总成

ITEM				#FOR
#	PART#	NAME		ASSY.
1	1700500002	Handle assembly	手柄总成	1
2	1700535001	plate	压板	1
3	1700513003	Pin shaft	轴	1
4	1700531002	Screw	螺钉	1
5	1700502001	Handle socket	手把座	1
6	1700402001	Pin shaft	固定座	1
7	1701220001	Bearing	自润滑轴承	2
8	2000507004	inching switch	微动开关	1
9	2001437006	Spring washer	垫圈	1
10	2000541004	Screw	螺钉	1
11	2000541001	Screw	螺钉	1
12	1700505001	Spring washer	垫圈	1

Fig. 2 Handle assembly
手把总成

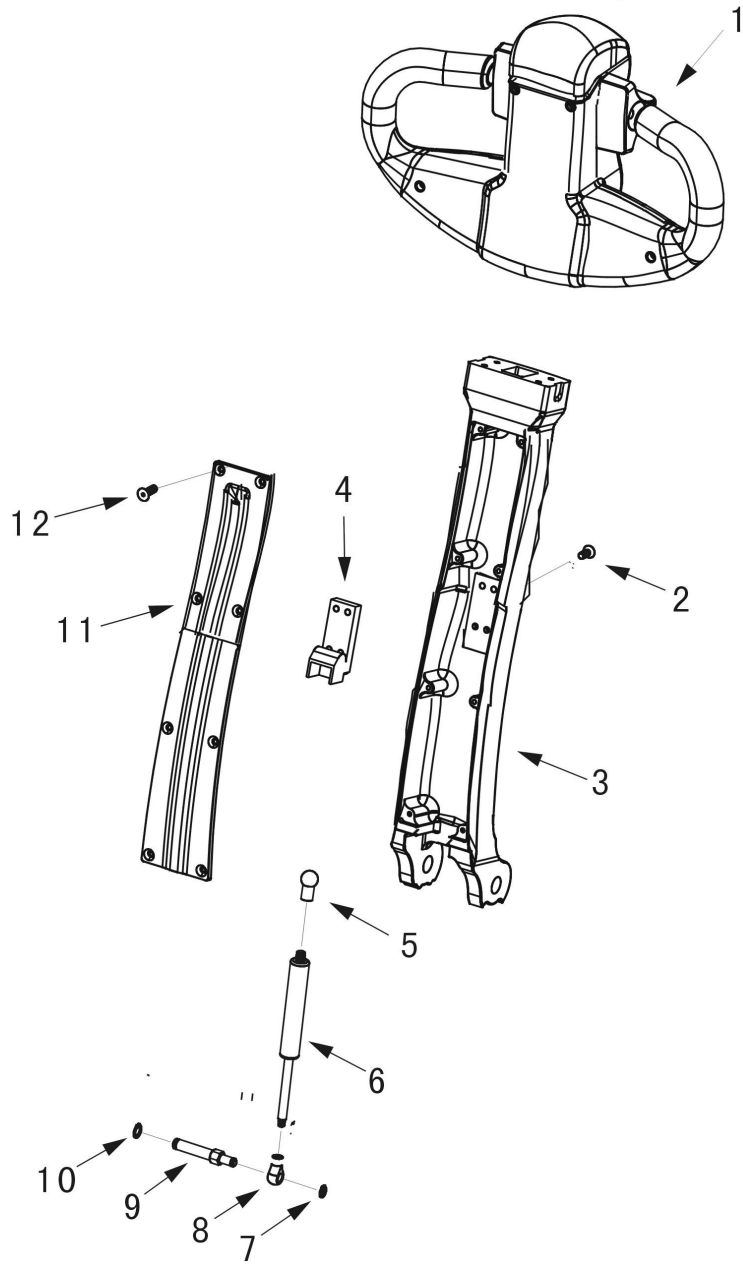


Fig. 2 Handle assembly
手把总成

ITEM #	PART#	NAME		#FOR ASSY.
1	5300500002	Switch box assembly	手柄总成	1
2	2000442001	Screw	螺钉	4
3	1700502002	Handle tube	铝手柄	1
4	0600534001	Pneumatic spring seat	气弹簧座	1
5	2000525012	Joint	接头	1
6	6000419001	Pneumatic spring complete	气弹簧	1
7	2000527002	Snap ring	挡圈	1
8	2000520003	Joint	接头	1
9	1700513002	Shaft	安装轴	1
10	1000527001	Snap ring	挡圈	1
11	1700502003	Covering plate	手柄盖	1
12	2000542001	Screw	螺钉	8

Fig. 3 Switch box assembly
手柄总成

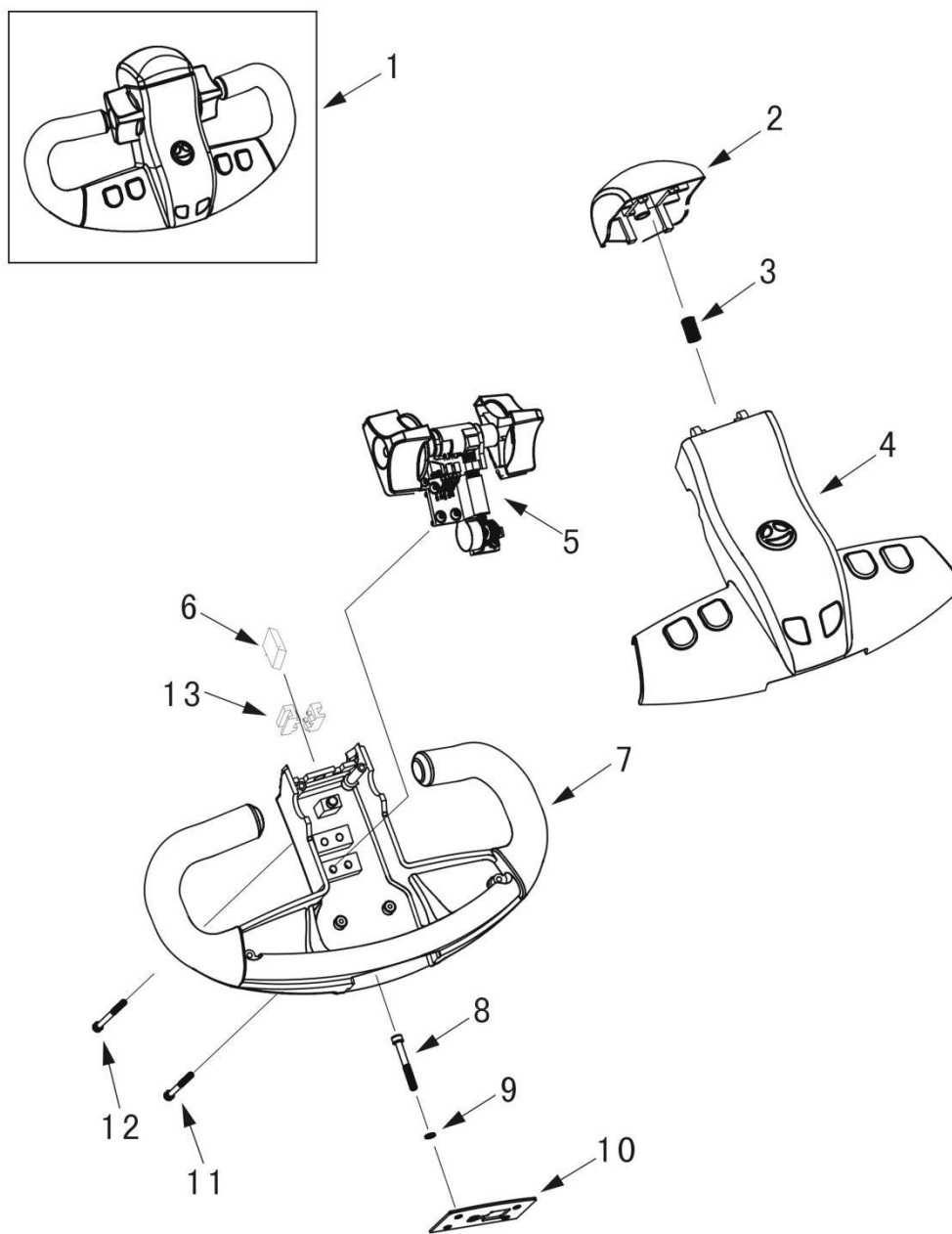


Fig. 3 Switch box assembly
手柄总成

ITEM #	PART#	NAME		#FOR ASSY.
1	5300500002	Switch box assembly	手柄总成	1
2	5300518003	Emergency reverser button cover	紧急按钮	1
3	2000519004	Spring	弹簧	1
4	5300500001	Cover assembly	面板总成	1
5	4300500004	Stepped switch assembly	行走开关	1
6	2000507002	Emergency reverser button	微动开关	1
7	5300517002	Handle	手把	1
8	6000131001	Screw	螺钉	4
9	1001437003	Washer	垫圈	4
10	1200518001	Supporting plate	固定块	1
11	3201431001	Screw	螺钉	2
12	6000131006	Screw	螺钉	2
13	9300517001	Seat	开关座	2

Fig. 4 Stepped switch assembly
行走开关总成

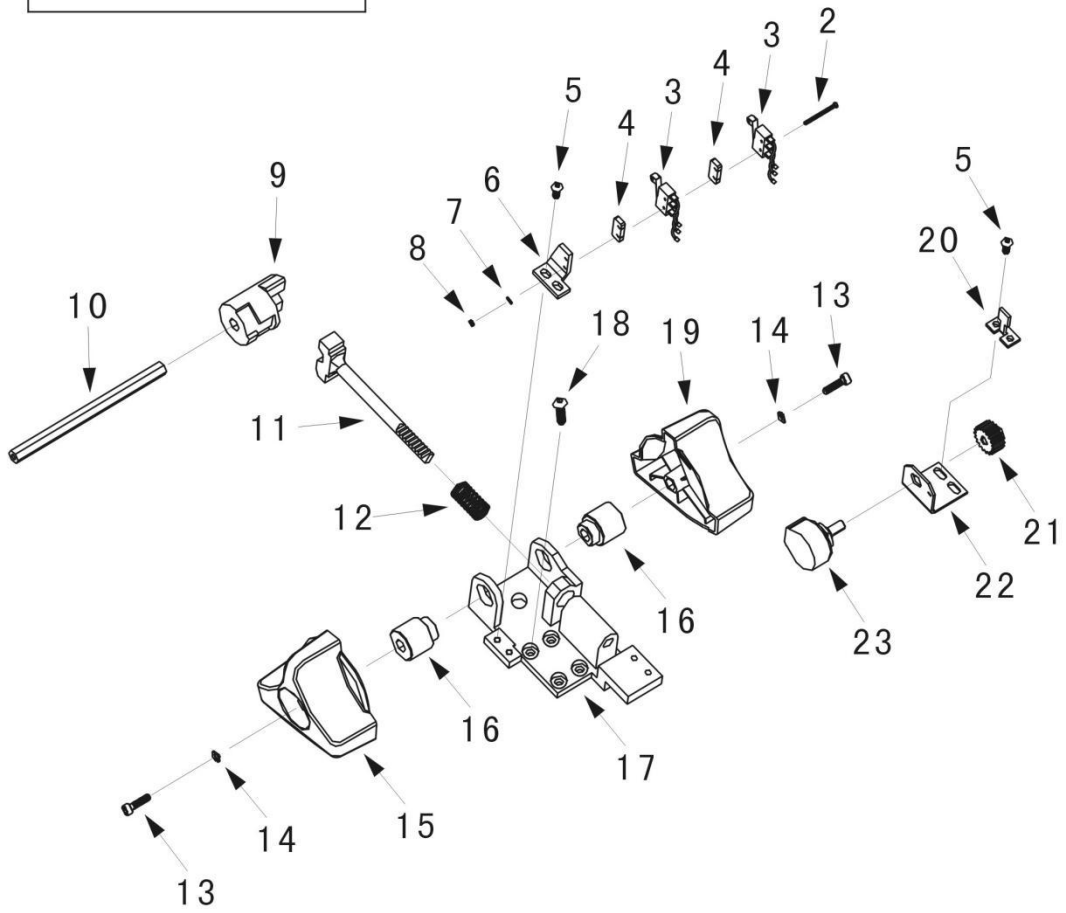
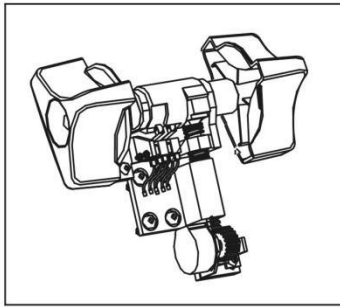


Fig. 4 Stepped switch assembly
行走开关总成

ITEM #	PART#	NAME		#FOR ASSY.
1	0700500001	Stepped switch assembly	行走开关	1
2	2000538005	Screw	螺钉	2
3	2000507003	Inching switch	微动开关	2
4	2000535001	Isolate block	绝缘块	2
5	2001141005	Screw	螺钉	2
6	4300518003	Fastening bracket	固定支架	1
7	1000504001	Washer	垫圈	2
8	2000539002	Nut	螺母	2
9	4300501005	Cam	凸轮	1
10	4300513001	Cam shaft	安装轴	1
11	1002343003	Rack	链条	1
12	2000519004	Spring	弹簧	1
13	4300900002	Screw	螺钉	2
14	2001437005	Washer	垫圈	2
15	4300540001	Right control knob	右控制手柄	1
16	4300512001	Shaft sleeve	轴套	2
17	4300535001	Fastening bracket	固定支架	1
18	2000541004	Screw	螺钉	4
19	4300540002	Left control knob	左控制手柄	1
20	4300518004	Baffle	挡板	1
21	2000521001	Gear	齿轮	1
22	4700418001	Fastening bracket	固定支架	1
23	4700400001	Potentiometer	电位器	1

Fig. 5 Driving system
行走总成

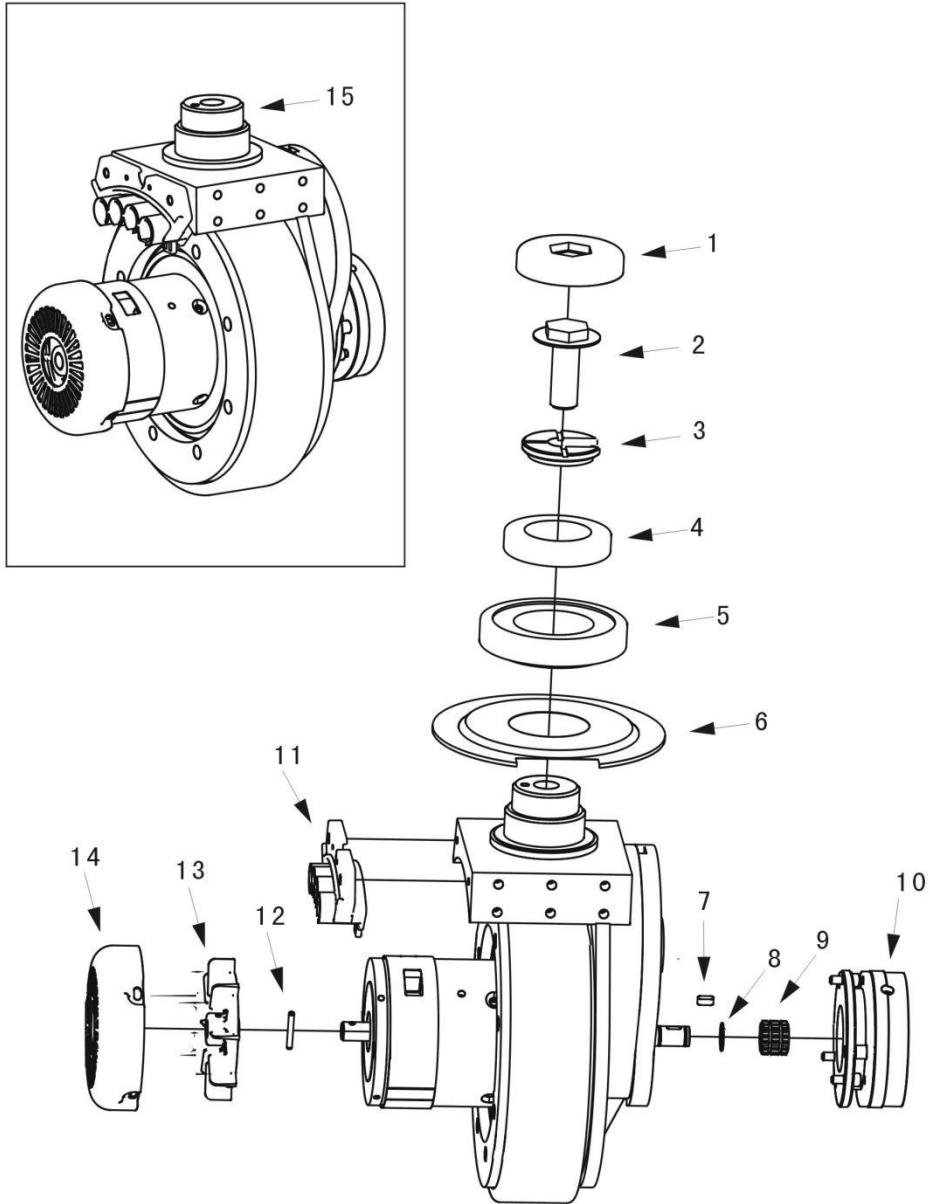


Fig. 5 Driving system
行走总成

ITEM				#FOR
#	PART#	NAME		ASSY.
1	1700234001	Protective cover	防护盖	1
2	1700230001	Screw	螺钉	1
3	1700302003	Opening gasket	开口垫	1
4	1700220001	Bearing	轴承	1
5	1700220002	Bearing	轴承	1
6	1700234002	Dust cover	防尘盖	1
7	1700104001	Flat key	平键	1
8	1700304001	O-ring	O型圈	1
9	1700302004	Spline	花键	1
10	1700300001	Brake assembly	刹车总成	1
11	1700407001	EAR	接耳座	1
12	1700304002	Elastic pin	弹性销	1
13	1701402001	Fan	风扇	1
14	1701402002	Fan cover	风扇盖	1
15	1700100002	Transmission support	变速箱 总成	1

Fig. 6 Gear box assembly
变速箱总成

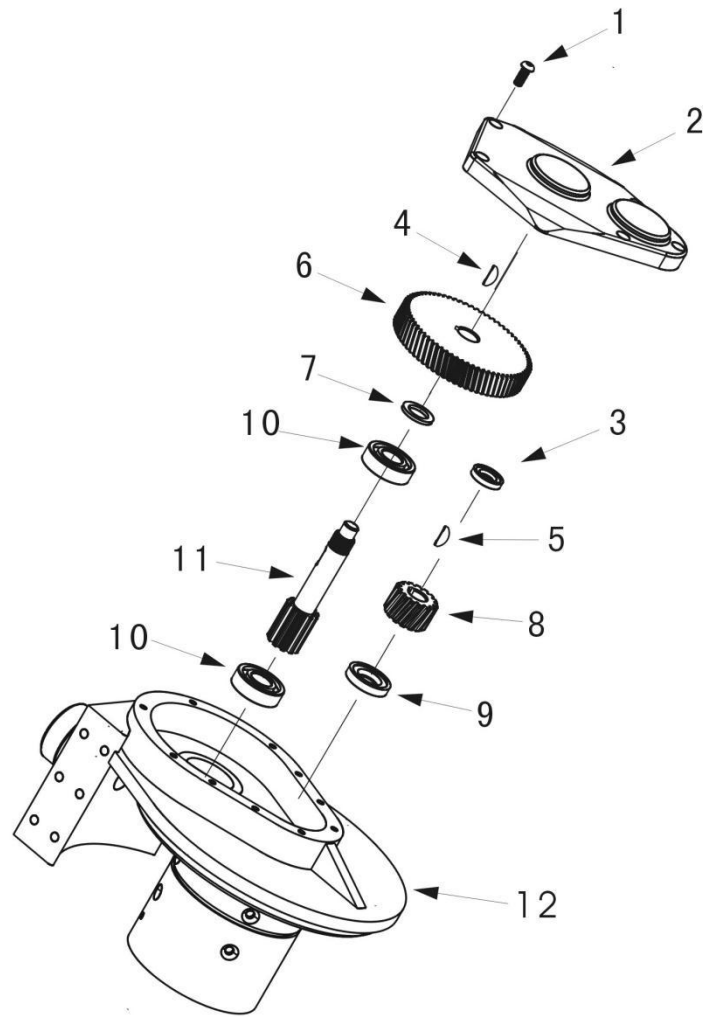


Fig. 6 Gear box assembly
 变速箱总成

ITEM #	PART#	NAME		#FOR ASSY.
1	2000931001	Screw	螺钉	5
2	1700111002	Side cover	变速箱盖	1
3	1700120001	Bearing	轴承	1
4	6000133002	Semicircle key	平键	1
5	6000133001	Semicirclekey	平键	1
6	1700121001	Gear	齿轮	1
7	6000127003	Ring	挡圈	1
8	1700121003	Gear	齿轮	1
9	6000105002	Seal washer	密封圈	1
10	6001420002	Bearing	轴承	2
11	1700121002	Gear	齿轴	1
12	1700300002	Motor assembly	电机总成	1

Fig. 7 Gear box assembly
变速箱总成

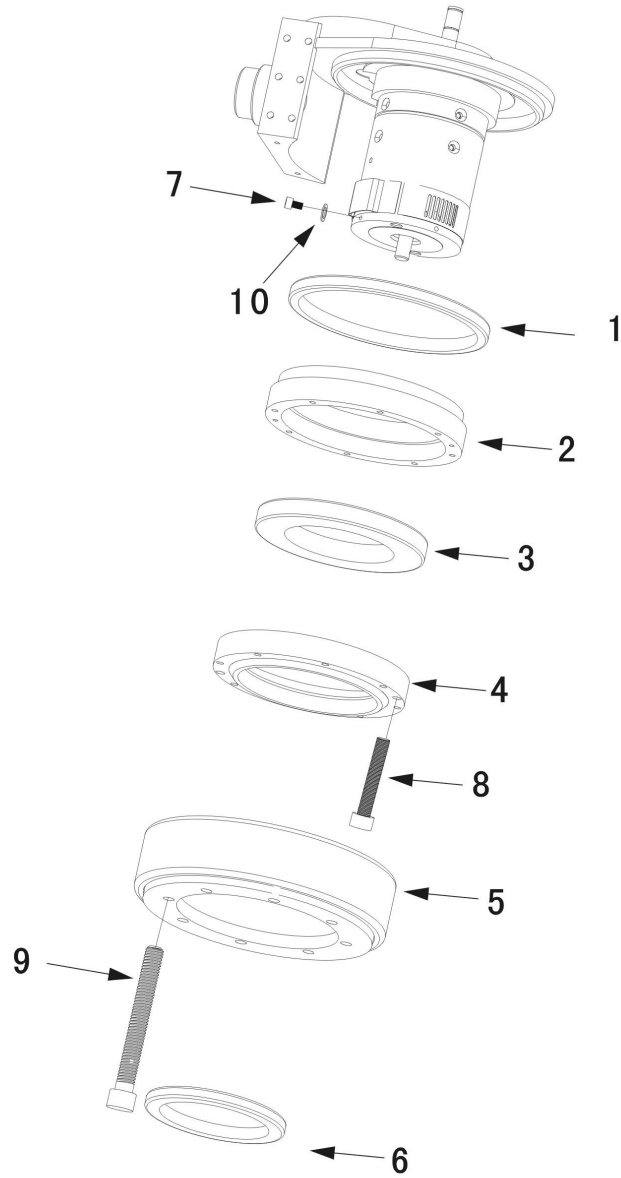


Fig. 7 Gear box assembly
 变速箱总成

ITEM #	PART#	NAME		#FOR ASSY.
1	6000105003	Sealing ring	密封圈	1
2	1700121004	Gear	直内齿	1
3	6000120003	Bearing	轴承	1
4	1700110001	Connection panel	连接盘	1
5	1700332004	Polyurethane	聚胺酯	1
6	6000105001	Sealing ring	密封圈	1
7	2001141001	Screw	螺钉	4
8	6000131004	Screw	螺钉	2
9	6000105001	Screw	螺钉	8
10	2001437006	Washer	垫圈	4

Fig. 8 Hydraulic system
液压站总成

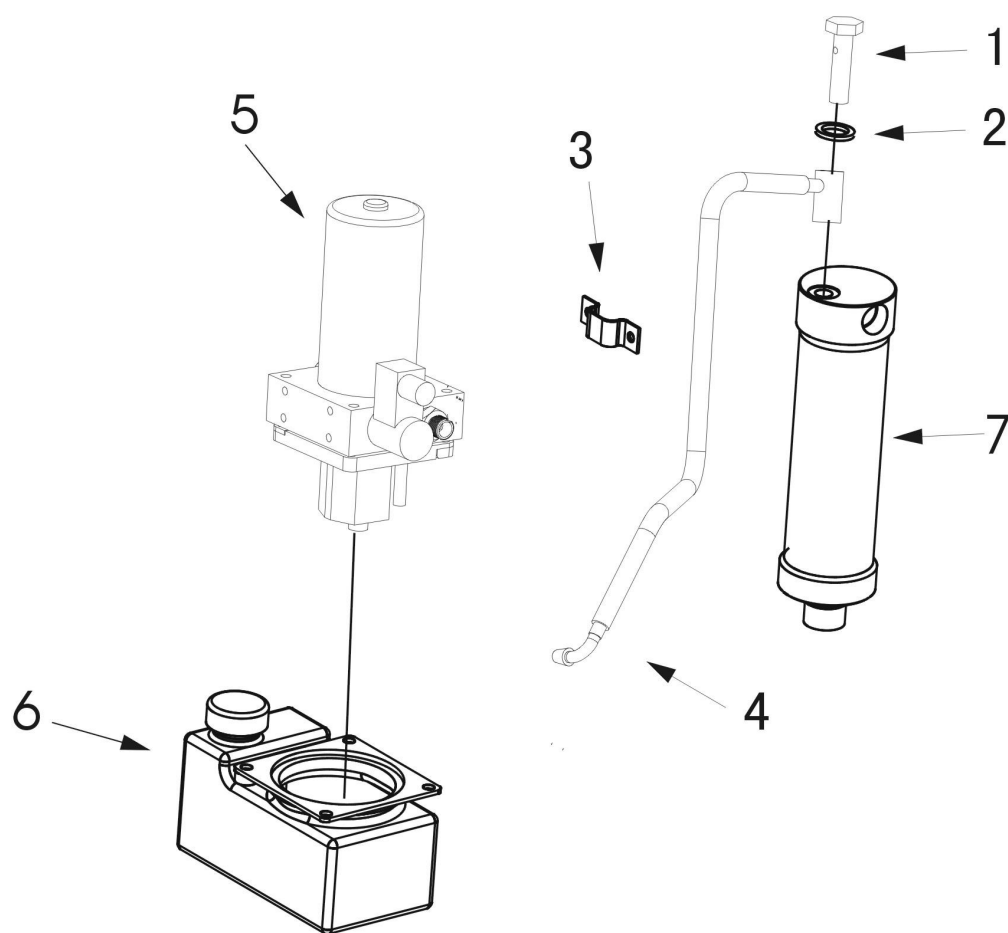


Fig. 8 Hydraulic system
 液压站总成

ITEM #	PART#	NAME		#FOR ASSY.
1	1700625001	Joint	接头	1
2	2000637002	Shim	垫片	2
3	3500635001	Pipe clamp	管夹	1
4	1700614003	Tubing	油管	1
5	1700603001	Plate	阀板总成	1
6	1700608001	Fuel tank	油箱	1
7	1700603006	Cylinder	油缸	1