



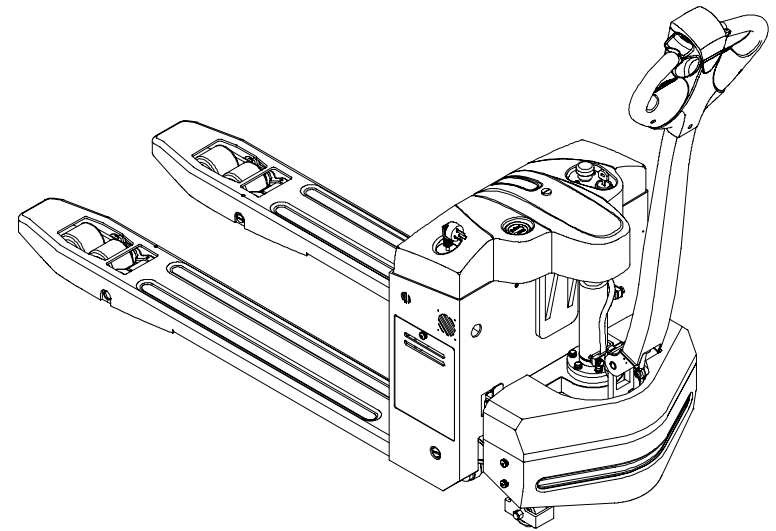
**A Series**

托盘搬运车

**CBD15-A2MC1**

**ELECTRIC PALLET TRUCK**

**零件目录**  
**PARTS CATALOG**



杭叉集团股份有限公司  
HANGCHA GROUP CO., LTD.

4 / 2016

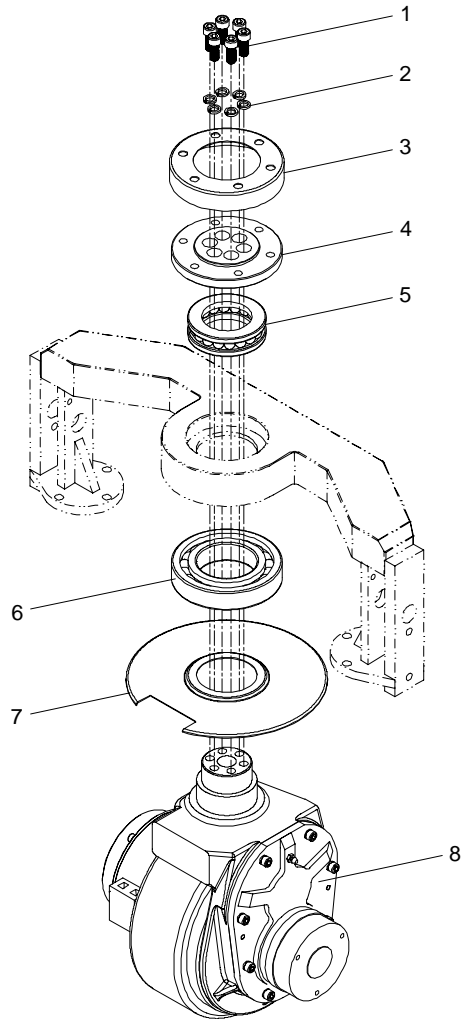
## 目录 Content

序号 Item	名称 Description	适用车型 Serial No.	页码 Page
图 1 Fig.1	驱动系统 Drive system	CBD15-A2MC1	1
图 2 Fig.2	驱动单元 Drive unit	CBD15-A2MC1	2
图 3 Fig.3	电磁制动器 Electromagnetic brake	CBD15-A2MC1	4
图 4 Fig.4	操纵转向系统 Tiller handle assy	CBD15-A2MC1	5
图 5 Fig.5	起升连杆组件 Lift linkage	CBD15-A2MC1	7
图 6 Fig.6	辅助轮总成 Caster wheels assy	CBD15-A2MC1	9
图 7 Fig.7	前叉总成 Front fork assy	CBD15-A2MC1	10
图 8 Fig.8	承载轮总成 Load wheels assy	CBD15-A2MC1	11
图 9 Fig.9	车身系统 Frame	CBD15-A2MC1	12
图 10 Fig.10	液压系统 Hydraulic system	CBD15-A2MC1	14
图 11 Fig.11	举升油缸 Lifting cylinder	CBD15-A2MC1	16
图 12 Fig.12	液压单元 Hydraulic power unit	CBD15-A2MC1	17
图 13 Fig.13	电气系统 Electric system	CBD15-A2MC1	18
图 14 Fig.14	线束 I Wiring harness I	CBD15-A2MC1	21
图 15 Fig.15	线束 II Wiring harness II	CBD15-A2MC1	23

图 1 驱动系统

Fig.1 Drive system

CBD15-A2MC1



序号 Item	物料码 Part No.	名称 Description	数量 Qty	备注或适用车型 Remarks Or Serial No.
1	G000070-008020-00	螺栓 M8×20 Bolt M8×20	6	
2	G000093-000008-00	垫圈 8 Washer 8	6	
3	AMB155-100002-001	防尘盖 Dust cover	1	
4	AMB155-100001-001	连接法兰 Connecting flange	1	
5	GT00301-0051210-00	轴承 51210 Bearing 51210	1	
6	GT00276-0006012-04	轴承 6012-Z Bearing 6012-Z	1	
7	AMB155-100100-000	盖板组件 Cover components	1	
8	AMB155-110000-000	驱动单元 Drive unit	1	见图 2 (See Fig.2)

图2 驱动单元  
Fig.2 Drive unit

CBD15-A2MC1

序号 Item	物料码 Part No.	名称 Description	数量 Qty	备注或适用车型 Remarks Or Serial No.
1	AMB155-110001-000	电磁制动器 Electromagnetic brake	1	见图3 (See Fig.3)
2	TC16x28x7	油封 Oil seal	1	
3	QD040-110-005	箱盖 Case cover	1	
4	QD040-110-006	闷盖 Cover	1	
5	G0893P1-000042-00	孔用弹性挡圈 42 Circlips for holes 42	1	
6	G000070-006020-00	螺钉 M6x20 Screw M6x20	8	
7	G000093-000006-00	垫圈 6 Washer 6	8	
8	G0894P1-000015-00	轴用弹性挡圈 15 Circlips for shaft 15	2	
9	GT00276-0006905-04	轴承 6905Z Bearing 6905Z	1	
10	QD040-110-004	从动齿轮 Driven gear	1	
11	GT00276-0016003-00	轴承 16003 Bearing 16003	1	
12	G000119-006018-00	圆柱销 B6x18 Parallel pin B6x18	2	
13	QD040-110-002	箱体 Transmission house	1	
14	G000070-008030-00	螺钉 M8x30 Screw M8x30	5	
15	G000093-000008-00	弹簧垫圈 8 Washer 8	5	

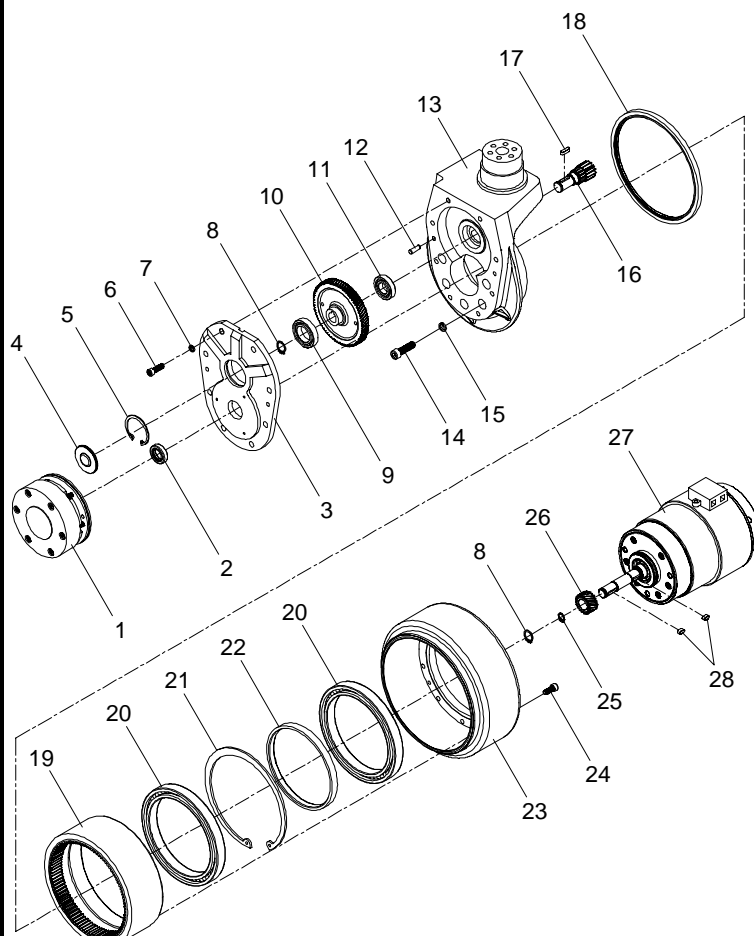


图2 驱动单元  
Fig.2 Drive unit

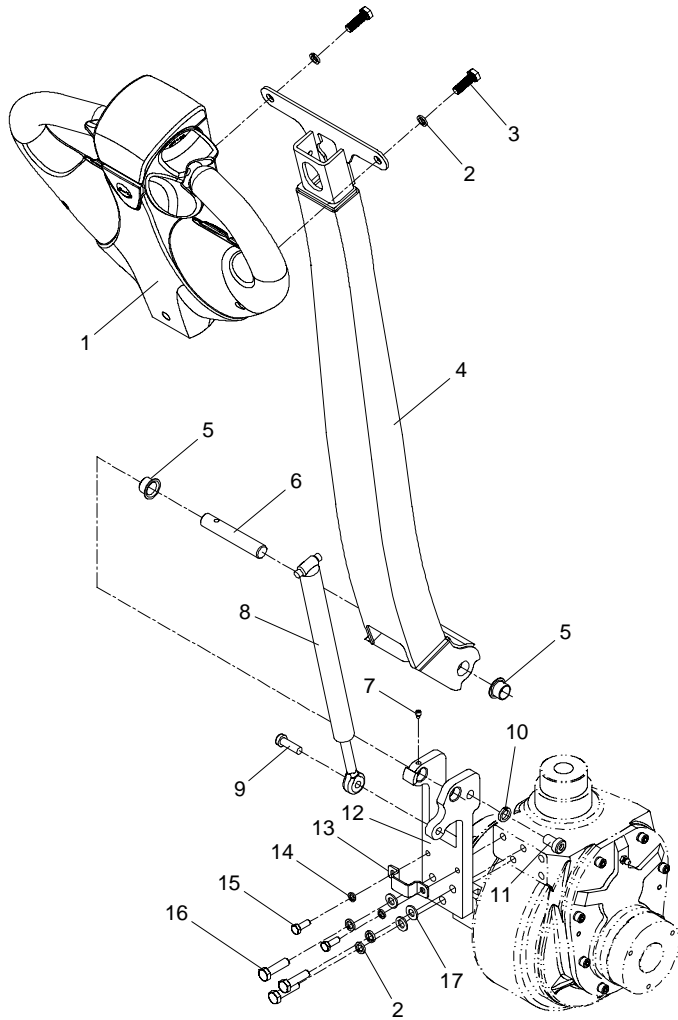
CBD15-A2MC1

序号 Item	物料码 Part No.	名称 Description	数量 Qty	备注或适用车型 Remarks Or Serial No.
16	QD040-110-003	齿轴 Gear shaft	1	
17	G001096-050016-00	平键 5×5×16 Rectangular key 5×5×16	1	
18	V-160L	油封 Oil seal	1	
19	QD040-110-202	齿圈 Gear ring	1	
20	GT00276-0061824-07	轴承 61824-2RS Bearing 61824-2RS	2	
21	G0893P1-000150-00	孔用弹性挡圈 150 Circlips for holes 150	1	
22	QD040-110-201	隔圈 Spacer	1	
23	AMB155-110003-000	驱动轮 Driving wheel	1	
24	G000070-006016-00	螺钉 M6×16 Screw M6×16	10	
25	G0894P1-000016-00	轴用弹性挡圈 16 Circlips for shaft 16	1	
26	QD040-110-007	主动齿轮 Main drive gear	1	
27	AMB155-110004-000	电机 Motor	1	
28	G001096-005010-00	平键 5×5×10 Rectangular key 5×5×10	2	



图4 操纵转向系统  
Fig.4 Tiller handle assy

CBD15-A2MC1



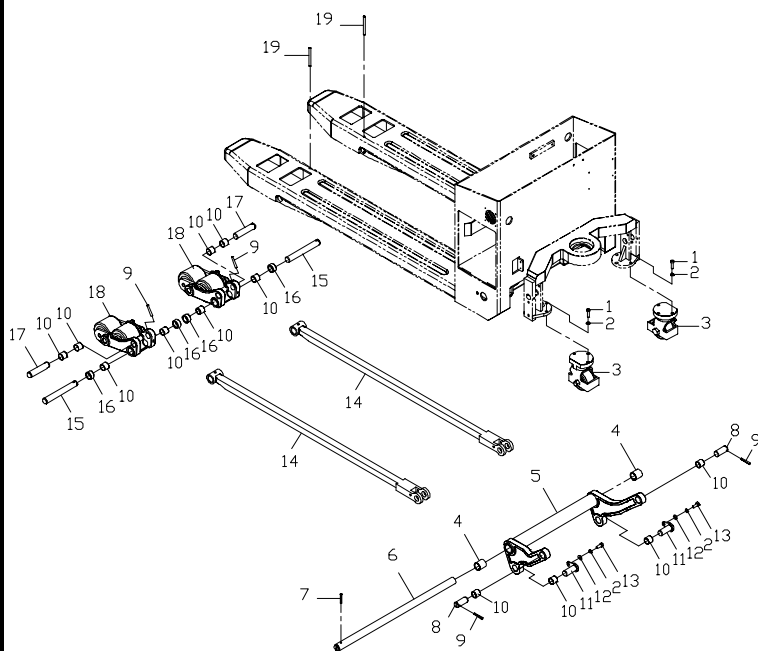
序号 Item	物料码 Part No.	名称 Description	数量 Qty	备注或适用车型 Remarks Or Serial No.
1	JW200-200001-000	控制手柄 Control handle	1	
2	G000093-000008-00	垫圈 8 Washer 8	5	
3	G005783-008025-00	螺栓M8×25 Bolt M8×25	2	
4	AMB155-270000-001	手柄管总成 Handle arm	1	
5	AMB150-200003-001	衬套151712 Bush 151712	2	
6	AMB150-200004-001	轴 Shaft	1	
7	GT00079-005012-00	螺钉M5×12 Screw M5×12	1	
8	AMB150-220000-001	气弹簧总成 Gas spring	1	
9	G000070-008020-00	螺钉M8×20 Screw M8×20	1	
10	G000093-000010-00	垫圈 10 Washer 10	1	
11	G000070-010016-00	螺钉M10×16 Screw M10×16	1	
12	AMB155-200001-001	连接支架 Connecting bracket	1	
13	AMB150-100010-000	折弯板 Bending plate	1	
14	G000093-000006-00	垫圈 6 Washer 6	2	
15	G005783-006015-00	螺栓M6×15 Bolt M6×15	2	





图5 起升连杆组件  
Fig.5 Lift linkage

CBD15-A2MC1

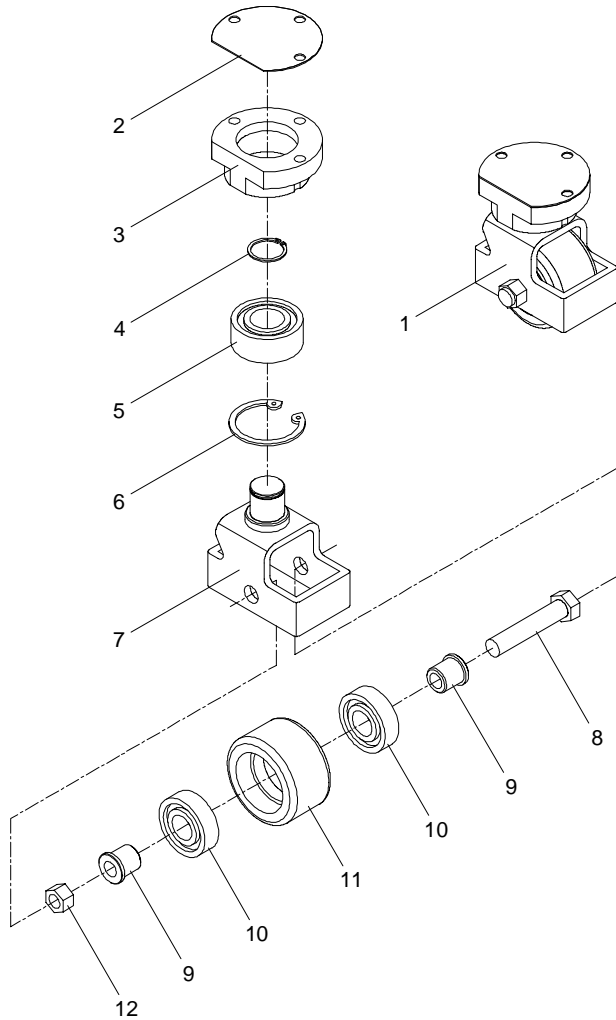


序号 Item	物料码 Part No.	名称 Description	数量 Qty	备注或适用车型 Remarks Or Serial No.
1	G000070-008025-00	螺钉 M8×25 Screw M8×25	6	
2	G000093-000008-00	垫圈 8 Washer 8	8	
3	AMB155-370000-000	辅助轮总成 Caster wheels assy	2	见图6 (See Fig.6)
4	AMB155-300007-000	衬套 252830 Spindle pipe 252830	2	
5	AMB155-350000-001	后连杆总成 Back link long assy	1	
6	AMB155-301000-002	后连杆长轴 Back link long axis	1	
7	G000879-006035-00	销 6×35 Pin 6×35	1	
8	AMB155-300004-000	后连杆短轴 Back link short axis	2	
9	G000879-006040-00	销 6×40 Pin 6×40	4	
10	AMB155-300003-000	衬套 202320 Spindle pipe 202320	12	
11	AMB155-303000-000	推杆后轴 Push rod rear axle	2	
12	G0097P1-000008-00	垫圈 8 Washer 8	2	
13	G005783-008025-00	螺栓 M8×25 Bolt M8×25	2	
14	AMB155-380000-000	推杆总成 Push rod assy	2	
15	AMB155-300001-000	前叉长轴 Front fork long axis	2	



图6 辅助轮总成  
Fig.6 Caster wheels assy

CBD15-A2MC1



序号 Item	物料码 Part No.	名称 Description	数量 Qty	备注或适用车型 Remarks Or Serial No.
1	AMB155-370000-000	辅助轮总成 Caster wheels assy	2	
2	AMB155-370005-000	垫片 Washer	2	
3	AMB155-370001-000	安装座 Installing seat	1	
4	G0894P1-000025-00	轴用弹性挡圈-A 型 25 Circlips for shaft A 25	1	
5	AMB155-370004-000	轴承 3205-2RS Bearing 3205-2RS	1	-
6	G0893P1-000052-00	孔用弹性挡圈-A 型 52 Circlips for hole A 52	1	
7	AMB155-371000-000	支架总成 Bracket assy	1	
8	G000889-000012-00	螺母 M12 Nut M12	1	
9	AMB155-370002-000	轴套 Shaft sleeve	2	
10	GT00276-0006204-07	轴承 6204-2RS Bearing 6204-2RS	2	
11	AMB155-370003-000	辅助轮 Φ70x40 Wheel Φ70x40	1	
12	G005782-012070-00	螺栓 M12x70 Bolt M12x70	1	





图9 车身系统  
Fig.9 Frame

CBD15-A2MC1

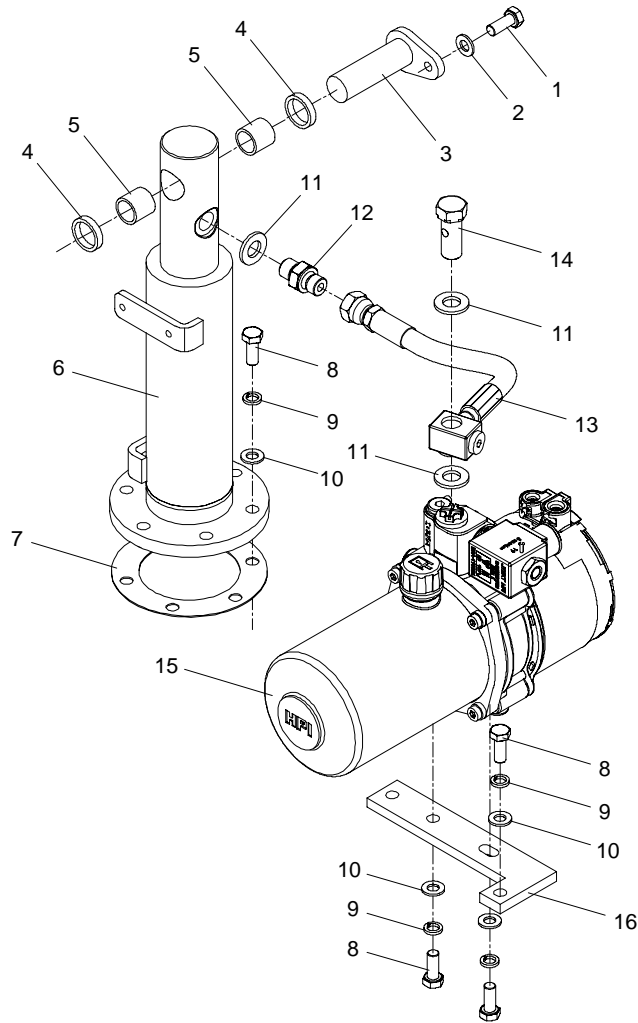
序号 Item	物料码 Part No.	名称 Description	数量 Qty	备注或适用车型 Remarks Or Serial No.
1	GT00833-006025-00	螺钉M6×25 Screw M6x25	1	
2	AMB150-400004-000	电线固定环 Wire retaining ring	1	
3	AMB155-400001-000	机罩 Cover	1	
4	AMB155-400002-000	仪表板 Control panel bracket	1	
5	G0097P1-000006-00	垫圈6 Washer 6	10	
6	G000093-000006-00	垫圈6 Washer 6	10	
7	G000070-006014-00	螺钉M6×14 Screw M6x14	2	
8	AMB155-440000-000	侧门 Side door	2	
9	G0097P1-000008-00	垫圈8 Washer 8	6	
10	G000093-000008-00	垫圈8 Washer 8	6	
11	G002672-008025-00	螺钉M8×25 Screw M8x25	6	
12	AMB155-420000-000	后车架 Rear frame	1	
13	AMB155-410000-001	前车架 Front frame	1	
14	AMB155-430000-000	轮罩 Wheel cover	1	
15	AMB150-400011-000	压线板 Plate	6	



图 10 液压系统

Fig.10 Hydraulic system

CBD15-A2MC1



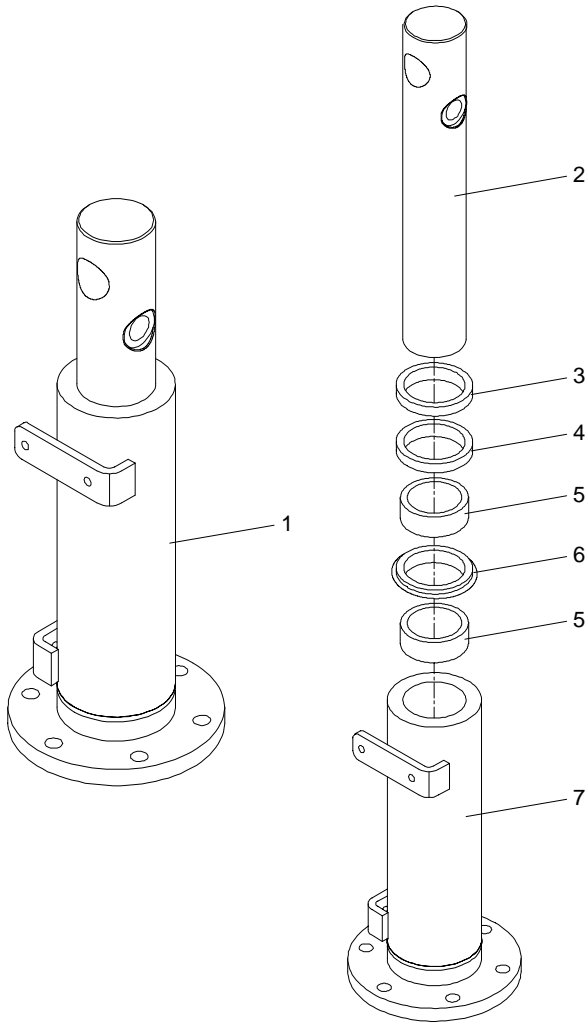
序号 Item	物料码 Part No.	名称 Description	数量 Qty	备注或适用车型 Remarks Or Serial No.
1	G005783-006016-00	螺栓M6×16 Bolt M6×16	1	
2	G000093-000006-00	垫圈6 Washer 6	1	
3	1220-134000-000	下连杆短销轴 Shaft	1	
4	AMB155-600001-000	调整垫片 Adjusting pad	2	
5	AMB150-300008-000	衬套202320 Bush 202320	2	
6	AMB155-620000-001	举升油缸 Lifting cylinder	1	见图 11 (See Fig.11)
7	AMB155-600004-001	调整垫 Adjusting pad	Need	
8	G005783-008025-00	螺栓M8×25 Bolt M8×25	10	
9	G000093-000008-00	垫圈8 Washer 8	10	
10	G0097P1-000008-00	垫圈8 Washer 8	10	
11	J000982-000014-00	垫圈14 Washer 14	3	
12	1120-400004-00	直通接头 Straight joint	1	
13	AMB155-601000-000	胶管总成 Hose assy	1	
14	AMB155-600003-000	铰接螺栓 Hinged bolt	1	
15	AMB155-610000-000	液压单元 Hydraulic power unit	1	见图 12 (See Fig.12)





图 11 举升油缸  
Fig.11 Lifting cylinder

CBD15-A2MC1



序号 Item	物料码 Part No.	名称 Description	数量 Qty	备注或适用车型 Remarks Or Serial No.
1	AMB155-620000-001	举升油缸 Lifting cylinder	1	
2	AMB155-620001-001	活塞杆 Piston rod	1	
3	WD1700400-N9	防尘圈 d40 Dust ring d40	1	
4	RUJ000400-Z20	U型圈 d40 U-Ring d40	1	
5	ZCH45-9.5	支撑环45×40×9.5 Support ring 45×40×9.5	2	
6	CKS-0400	斯特封d40 Sitefeng seal d40	1	
7	AMB155-621000-001	缸体 Cylinder body	1	
K	AMB155-62-001-KIT	起升油缸修理包 Seal kit	1	INC:3,4,6



图 13 电气系统  
Fig.13 Electric system

CBD15-A2MC1

序号 Item	物料码 Part No.	名称 Description	数量 Qty	备注或适用车型 Remarks Or Serial No.
1	JD201S-G00	继电器24V Electric relay	1	
2	GT070P1-004010-00	螺钉M4×10 Screw M4×10	2	
3	G000093-000004-00	垫圈4 Washer 4	8	
4	G0097P1-000004-00	垫圈4 Washer 4	8	
5	GX160-701001-G00	通用继电器 Electric relay	1	
6	GT070P1-005010-00	螺钉M5×10 Screw M5×10	2	
7	G000093-000005-00	垫圈5 Washer 5	2	
8	G0097P1-000005-00	垫圈5 Washer 5	2	
9	AEBS200-700002-000	紧急开关 Emergency stop switch	1	
10	JK404C-1-G00	电门开关 Key Switch	1	
11	GT070P1-004050-00	螺钉M4×50 Screw M4×50	2	
12	ABS200-700050-000	电缆支架 Cable bracket	1	
13	AMB150-720002-000	控制器 Controller	1	
14	AMD100-720001-000	散热板 Aluminium plate	1	
15	AMB150-720003-001	906仪表 906 Meter	1	

图 13 电气系统

Fig.13 Electric system

CBD15-A2MC1

序号 Item	物料码 Part No.	名称 Description	数量 Qty	备注或适用车型 Remarks Or Serial No.
16	G907408-005012-00	螺钉组合件M5×12 Screw assy M5×12	4	
17	AMB155-740300-000	充电机 Charger	1	
18	AMB150-700100-000	风扇 Fan	1	
19	GT070P1-004020-00	螺钉M4×20 Screw M4×20	4	
20	30PHD-721101-G00	熔断器支架 Fuse bracket	1	
21	G0097P1-000008-00	垫圈8 Washer 8	5	
22	G000093-000008-00	垫圈8 Washer 8	5	
23	G006170-000008-00	螺母8 Nut 8	4	
24	AMB150-720004-000	熔断器100A Fuse 100A	1	
25	GT070P1-004016-00	螺钉M4×16 Screw M4×16	2	
26	AMB150-730010-G00	蓄电池 Battery	2	
27	R450-700200-000	电喇叭 Horn	1	
28	G005783-008010-00	螺栓M8×10 Bolt M8×10	1	
29	AMB155-700010-000	指示灯 Indicator lamp	1	
30	GT070P1-004025-00	螺钉M4×25 Screw M4×25	2	



图 14 线束 I  
Fig.14 Wiring harness I

CBD15-A2MC1

	序号 Item	物料码 Part No.	名称 Description	数量 Qty	备注或适用车型 Remarks Or Serial No.
	1	JW200-200001-000	控制手柄 Control handle	1	
	2	JK404C-1-G00	电门开关 Key switch	1	
	3	AMB150-720003-001	906仪表 906 Meter	1	
	4	AMB155-700010-000	指示灯 Indicator lamp	1	
	5	R450-700200-000	电喇叭 Horn	1	
	6	AMB150-700100-000	风扇 Fan	1	
	7	AMB150-720002-000	控制器 Controller	1	
	8	AMB155-740300-000	充电机 Charger	1	
	9	AMB150-740200-000	充电电源线(国标) Plug line (China criterion)	1	
	9	AMB150-740400-000	充电电源线(欧标) Plug line(Europe criterion)	1	外销配 (For export)
	10	AMB155-710000-000	车身线束 Main wire harness	1	
	11	GX160-701001-G00	通用继电器 Electric relay	1	
	12	AMB155-702000-000	起升限位开关总成 Lifting limit switch assy	1	
	13	AMB150-703000-001	互锁开关总成 Interlock switch assy	1	
14	AMB155-700001-G00	接触器 Contactor	1		

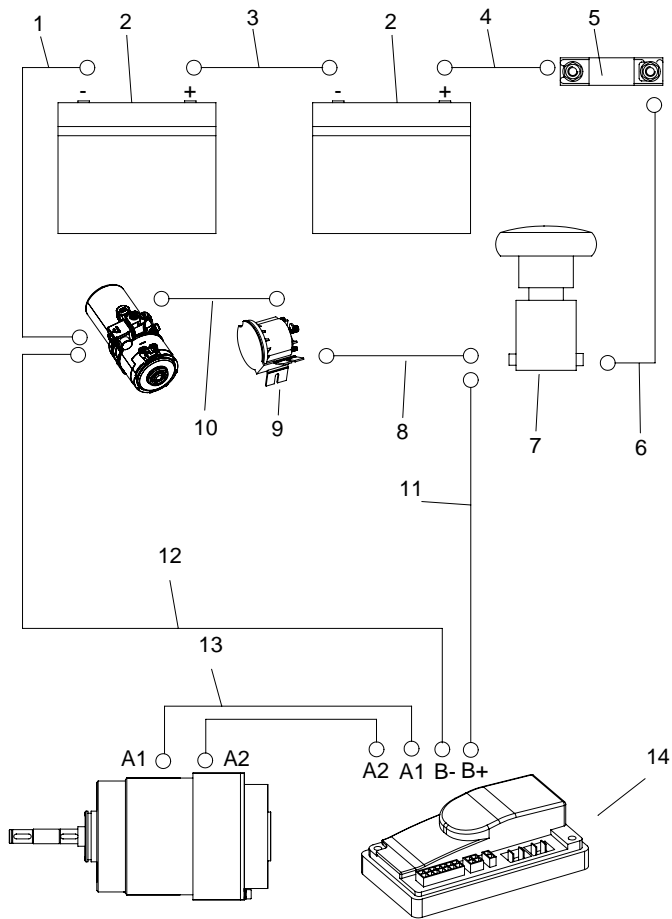




图 15 线束 II  
Fig.15 Wiring harness II

CBD15-A2MC1

序号 Item	物料码 Part No.	名称 Description	数量 Qty	备注或适用车型 Remarks Or Serial No.
1	AMB155-700300-000	负电缆 Power cable (Jumper)	1	
2	AMB150-730010-G00	蓄电池 Battery	2	
3	AEBS200-700200-000	正电缆 Battery cable	1	
4	AMB155-700200-000	正电缆 Power cable (E-stop)	1	
5	AMB150-720004-000	熔断器100A Fuse 100A	1	
6	AMB155-700400-000	断电开关电缆 E-stop cable	1	
7	AEBS200-700002-000	紧急开关 Emergency stop switch	1	
8	AMB155-700500-000	油泵电机正电缆 Pump & motor cable(+)	1	
9	AMB155-700001-G00	接触器 Contactor	1	
10	AMB155-700900-000	油泵接触器电缆 Pump & Contactor cable	1	
11	AMB155-700700-000	控制器正电缆 Controller cable(+)	1	
12	AMB155-700800-000	控制器负电缆 Controller cable( - )	1	
13	AMB155-700600-000	牵引电机电缆 Power cable	1	
14	AMB150-720002-000	控制器 Controller	1	





杭叉集团股份有限公司  
HANGCHA GROUP CO., LTD.

全国客服热线：400-884-7888

- 地址：中国浙江临安经济开发区东环路 88 号
- 电话：0571-88926666（总机号）85191117
- 传真：0571-85131772    ■ 邮编：311305
- 网站：<http://www.zjhc.cn>    ■ 电子邮件：[sales@zjhc.cn](mailto:sales@zjhc.cn)

- Address For: OVERSEAS USERS
- Address: 88 Donghuan Road, Lin'an Economic Development Zone, Zhejiang, China
- Fax: 0086-571-88926789    0086-571-88132890    ■ ZIP:311305
- Web: <http://www.hcforlift.com>    ■ E-mail: [sales@hcforlift.com](mailto:sales@hcforlift.com)