

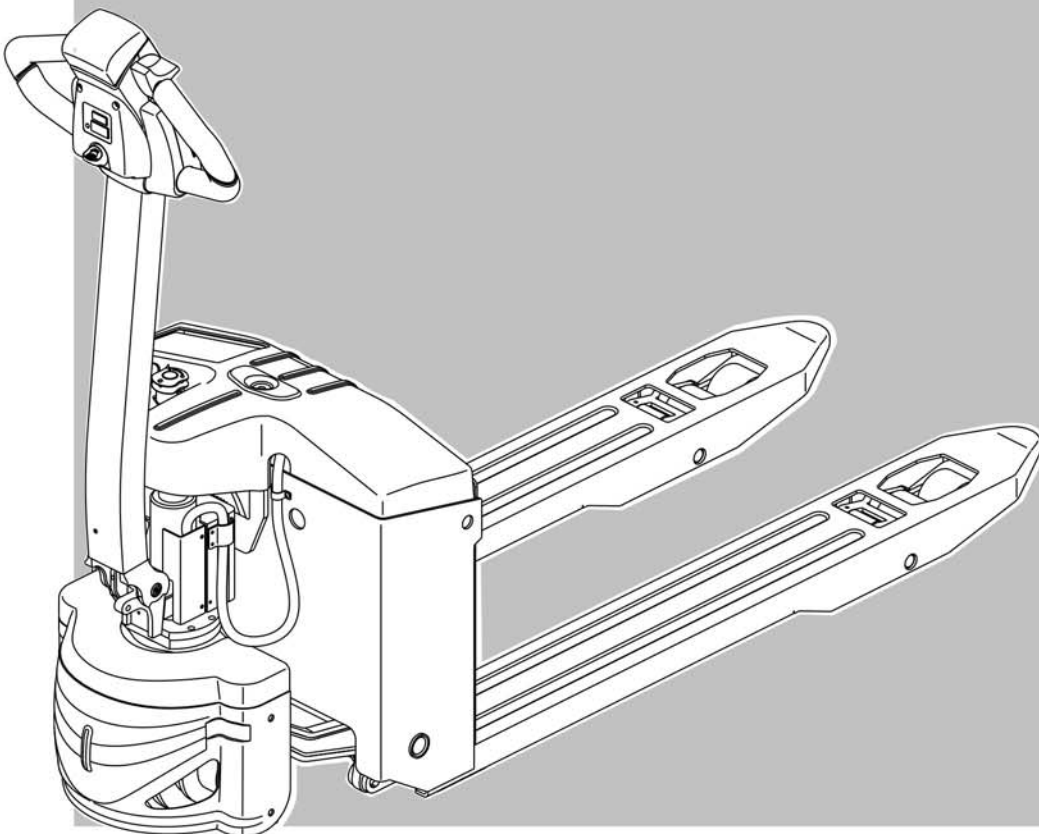
EP中力

EPT20-15ET2

iMover 2 Electric Pallet Truck

小金刚2 电动搬运车

Parts Manual
零件目录



CE

CE CERTIFICATE

PARTS ORDERING INSTRUCTIONS

HOW TO ORDER

When you order, supply the part number, quantity, model and serial numbers of your machine. Supplying this information will assure prompt, efficient handling of your order.

Since your dealer carries many parts in stock and maintains up-to-date prices on all parts, he will be able to process your order immediately. If, for some reason, the part is not in stock, he will order it from the factory. In either event, he maintains a current file of service manuals, which give all available parts ordering or technical information.

WHERE TO ORDER

Always order parts from the dealer who sold you your truck. If it is necessary for the dealer to order parts from the factory, he is able to get prompt service for you. Parts are shipped in accordance with shipping instructions given on the order.

INSTRUCTIONS FOR RETURNING PARTS

Under NO CIRCUMSTANCES will parts be accepted at the factory for credit without prior approval . We cannot accept responsibility for parts returned without authorization.

If you have some parts which must be returned, contact your dealer. If he believes parts should be returned, he will arrange for authorization to return the parts.

CHANGES

When changes are made to the machine, revised pages for this manual will be issued. These pages must be inserted in your parts manual as soon as they are received. Failure to keep your parts manuals up to date will result in confusion and may cause you to order wrong parts.

EP EQUIPMENT CO.,LTD.

Address: XIAQUAN,DIPU,ANJI,ZHEJIANG,CHINA

Tel:86-571-28035626/28035657

Fax:86-571-28035616

Net:www.ep-ep.com

Email:epparts@ep-ep.com

ALL RIGHT RESERVED COPYRIGHT

PM1114 09.15

零件订购说明

如何订购

当您订购的时候，您需要提供搬运车零件的编号，数量，型号和序列号。提供这些信息能够保证您的订购更加的高效。

因为您的经销商有很多零件的存货，而且需要保持所有零件的价格是最新的，所以他会尽快地处理您的订购需求。假如因为某些原因，存货中没有这个零件，那么他会从公司订货。无论怎么样的情况，他手里都会有一份服务手册文件，它能提供所有可用的零件的订购信息或者技术信息。

订购地点

当您需要订购零件时，请到销售给您搬运车的经销商那里订购。如果经销商有必要从公司订购零件，他能为您提供快捷的服务。根据您的订购信息，零件和它对应的操作说明会一起装好。

零件的退还说明

一般情况下，因为信用的关系，退还的零件没有事先的同意，是不会被公司认可的。我们不会对没有经过授权但退还过来的零件负责。

如果您有一些零件一定要退还，请联系您的经销商。若经销商确认零件可以退还，则其会安排授权要退还的零件。

技术修改

当搬运车技术有修改时，这本手册的修正页会重新发行。当您拿到这些修正页时，您一定要立即把它们插入到您的零件手册中。若没有及时的更新您的零件手册，则可能会导致您订购、维护等方面的错误。

浙江中力机械有限公司

地址：浙江省安吉县递铺镇霞泉村中力园区

电话：86-571-28027600/28035663

传真：86-571-28035616

网址：www.ep-ep.com

邮箱：eparts@ep-ep.com

版权归本公司所有

PM1114 09.15

GENERAL INFORMATION

INDEX

This parts manual is arranged for easy identification of parts .The index at the front of the catalog gives location of major groups and assemblies.

PART LIST

The **Index**, describes the item on the Figure you are looking at. The **Part No.** is a numerical description of the item and the part ordering number. The **Part Name** is a description of the part number in alphabetical form. The **No.** is the quantity used on the machine.The **Applied Date** is a description when the part is applicable.The **Remark** is the explanation of the part for a supplement,such as the model,the capability, the characteristic,etc.

HOW TO READ PARTS MANUAL

HELP 1:

	Index	Part No.	Part Name	No.	Applied Date	Remark
	序号	零件编号	零件名称	数量	适用日期	备注
A	18	0000-000667-00	Bearing 61905Z	1		
	19	1115-200004-00	Helical Gear	1		
		1115-200005-00	Helical Gear	1		
	20	0000-000680-00	Bearing 16003Z	1		
B	22	2108-540000-00	Bracket	1		
	23	1115-500005-00-01	Battery	2		65AH / 12V
	23	1115-500005-00-02	Battery	2		85AH / 12V
	24	0000-000378-00	Screw M4×16	2		
C	8	ck11-560003-00	JC100 Switch	1		
	9	01 ck11-520008-00	JC100 Switch Wire Harness	1		Cancelled/取消
		02 ck11-520008-0A	JC100 Switch Wire Harness	1		
	10	0000-000001-00	Screw M6×20	2		

A: The part of Index 19 is a discreteness with two kings of parts.It denotes **Not Sold Separately**.

B: The part of Index 23 is **Optional**.

C: The part of index 9 is improved and upgraded. Please use the **new Part Number** when ordering.

D: The part of Index 7 has an **Applicability**,because it's our policy to constantly improve our products.

The part of Index 11 is same ,but the Part Number is changed.And please use the new Part Number when you order this part.

	Index	Part No.	Part Name	No.	Applied Date	Remark
	序号	零件编号	零件名称	数量	适用日期	备注
D	7	01 2125-410004-00	Cap	1	-071011	
		02 2125-410004-0A	Cap	1	071011-	
	8	0000-000084-00	Ring Wiper 35×43×5-6.5	1		
	9	0000-000370-00	O-ring 40×3.1	1		
	10	2125-410005-00	Ring Back Up 50×45×20	1		
	11	01 0000-000197-00	Rod Packing 40×50×6	1		Old
	02 0000-000512-00	Rod Packing 40×50×6	1		New	

1. Record by time

- 070911 : Ending on July 09, 2011.
- 071011- : Beginning on July 10, 2011.

2. Record by serial number

Index	Part No.	Part Name	No.	Applied Date	Remark
序号	零件编号	零件名称	数量	适用日期	备注
7	01 2125-410004-00	Cap	1	-S2016344	
02	2125-410004-0A	Cap	1	S2016345-	
8	0000-000084-00	Ring Wiper 35×43×5-6.5	1		
9	0000-000370-00	O-ring 40×3.1	1		
10	2125-410005-00	Ring Back Up 50×45×20	1		
11	01 0000-000197-00	Rod Packing 40×50×6	1		Old
02	0000-000512-00	Rod Packing 40×50×6	1		New

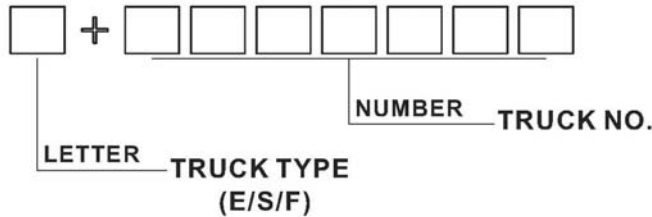
D ⇨

- S2016344 : Ending at S2016344
- S2016345- : Starting at S2016345

There are three types of serial number:

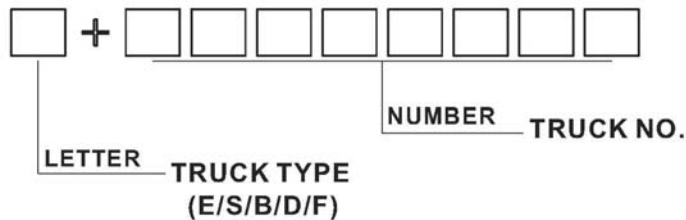
1) 1 (LETTER)+ 7 (NUMBERS)

Applied Date: Up to February 1,2015



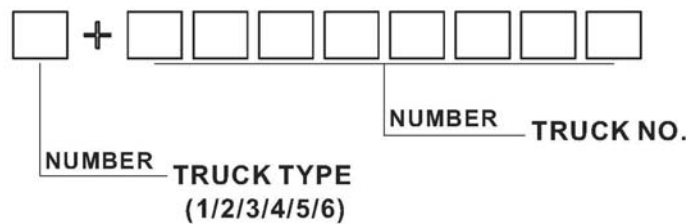
2) 1 (LETTER)+ 8 (NUMBERS)

Applied Date: From February 1,2015 to June 1,2015

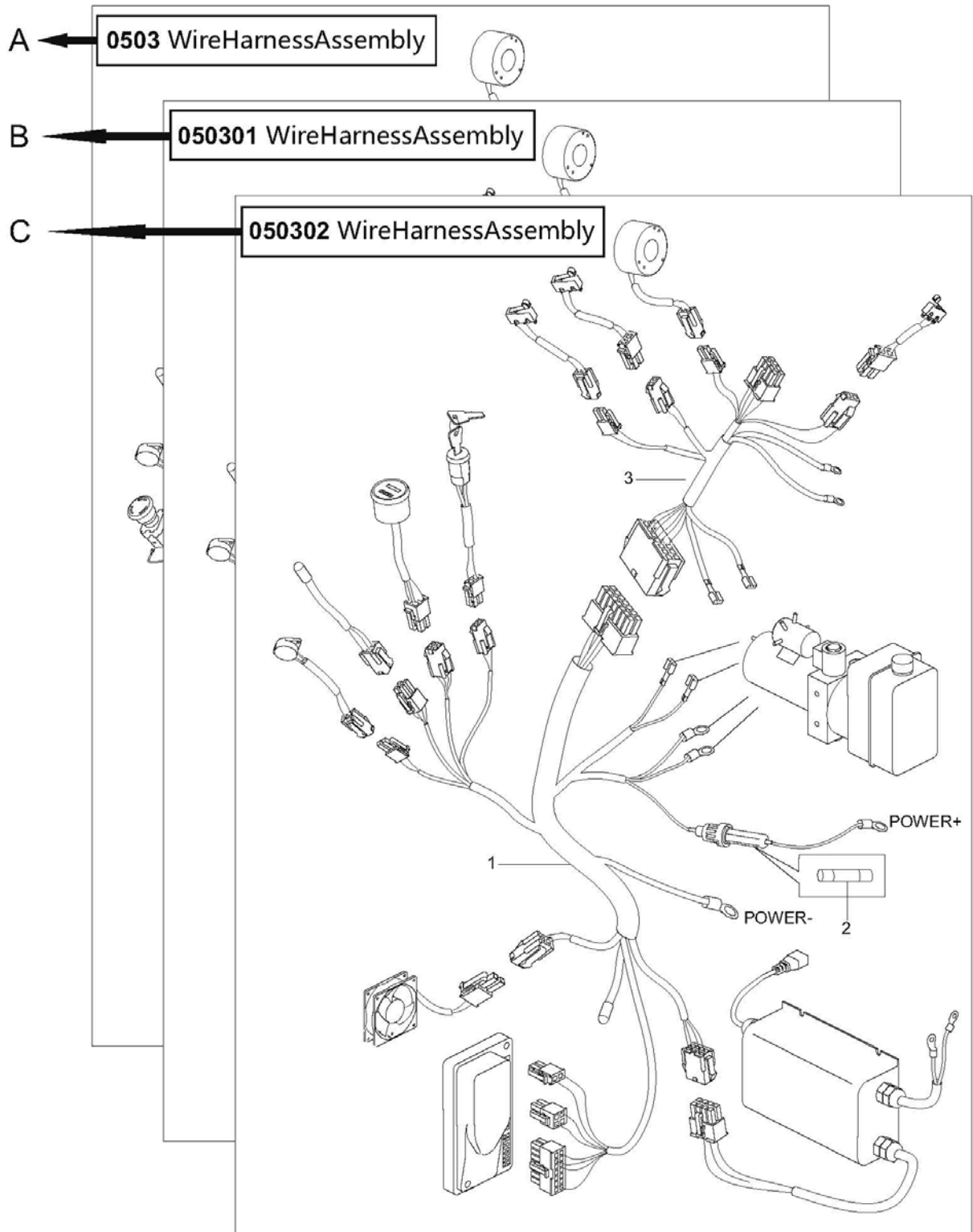


3) 1 (NUMBER)+ 8 (NUMBERS)

Applied Date: From June 1,2015



HELP 2:



A: Section 0503 is the original version.

B: Section 050301 is the version that some parts in the Section 0503 have been changed.

C: Section 050302 is the version that some parts in the Section 050301 have been changed.

When you order, Please locate specific parts information of your truck by the Applied Date of parts in each version.

概要

目录

将零件目录分组几个易识别的部分，并把主要结构和总成放置在索引目录中。

零件明细表

Index 描述的是在插图上，您想要找的项目。**Part No.**是零件的一系列描述和它的订购号码。**Part Name**是用文字的形式描述零件的号码。**No.**代表的是零件在搬运车上使用的数量。**Applied Date**表示的是零件适用的时间范围。**Remark**是用来补充说明零件信息(例如车型、性能和特征等)。

怎么读取零件明目录

帮助 1:

	Index 序号	Part No. 零件编号	Part Name 零件名称	No. 数量	Applied Date 适用日期	Remark 备注
A	18	0000-000667-00	Bearing 61905Z	1		
	19	1115-200004-00	Helical Gear	1		
		1115-200005-00	Helical Gear	1		
	20	0000-000680-00	Bearing 16003Z	1		
B	22	2108-540000-00	Bracket	1		
	23	1115-500005-00-01	Battery	2		65AH / 12V
	23	1115-500005-00-02	Battery	2		85AH / 12V
	24	0000-000378-00	Screw M4×16	2		
C	8	ck11-560003-00	JC100 Switch	1		
	9	01 ck11-520008-00	JC100 Switch Wire Harness	1		Cancelled/取消
	02	ck11-520008-0A	JC100 Switch Wire Harness	1		
	10	0000-000001-00	Screw M6×20	2		

A: 序号 19 表示的是一个由两种零件组成的组件，不以单件形式出售。

B: 序号 23 表示该零件有几个品种可供您的选择。

C: 序号 9 表示该零件进行了改进和升级，订购时请使用新的零件编码。

D: 序号 7 表示该零件有一个适用的时间范围。这是因为我们在不断地进行产品的升级。

序号 11 表示的都是同一种零件，只是零件编码有所变更。因此，当您订购这类零件时，请您使用新的零件编码。

	Index 序号	Part No. 零件编号	Part Name 零件名称	No. 数量	Applied Date 适用日期	Remark 备注
D	7	01 2125-410004-00	Cap	1	-071011	
	02	2125-410004-0A	Cap	1	071011-	
	8	0000-000084-00	Ring Wiper 35×43×5-6.5	1		
	9	0000-000370-00	O-ring 40×3.1	1		
	10	2125-410005-00	Ring Back Up 50×45×20	1		
	11	01 0000-000197-00	Rod Packing 40×50×6	1		Old
	02	0000-000512-00	Rod Packing 40×50×6	1		New

1. 用时间记录

- 070911 : 截止到 2011 年 7 月 09 日
 071011- : 起始于 2011 年 7 月 10 日

2. 用序列号记录

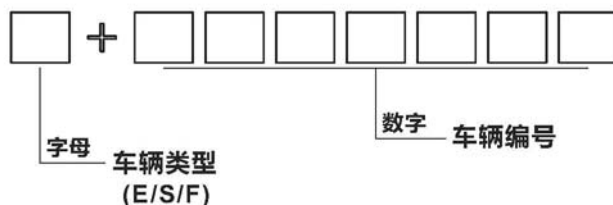
Index 序号	Part No. 零件编号	Part Name 零件名称	No. 数量	Applied Date 适用日期	Remark 备注
7	01 2125-410004-00	Cap	1	-S2016344	
02	2125-410004-0A	Cap	1	S2016345-	
8	0000-000084-00	Ring Wiper 35×43×5-6.5	1		
9	0000-000370-00	O-ring 40×3.1	1		
10	2125-410005-00	Ring Back Up 50×45×20	1		
11	01 0000-000197-00	Rod Packing 40×50×6	1		Old
02	0000-000512-00	Rod Packing 40×50×6	1		New

-S2016344 : 截止序列号 S2016344
 S2016345- : 起始序列号 S2016345

有三种序列号形式:

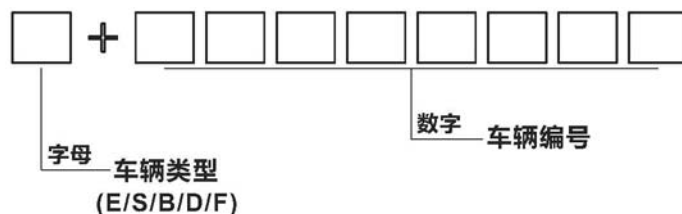
1) 1 (字母) + 7 (数字)

适用时间: 截止到 2015 年 2 月 1 日



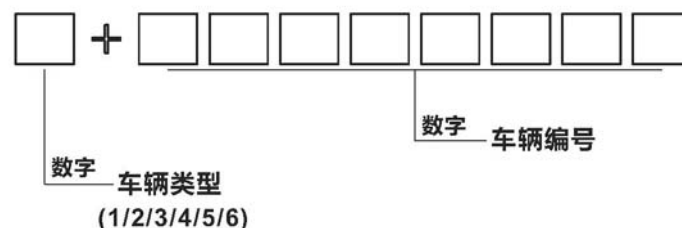
2) 1 (字母) + 8 (数字)

适用时间: 2015 年 2 月 1 日至 2015 年 6 月 1 日

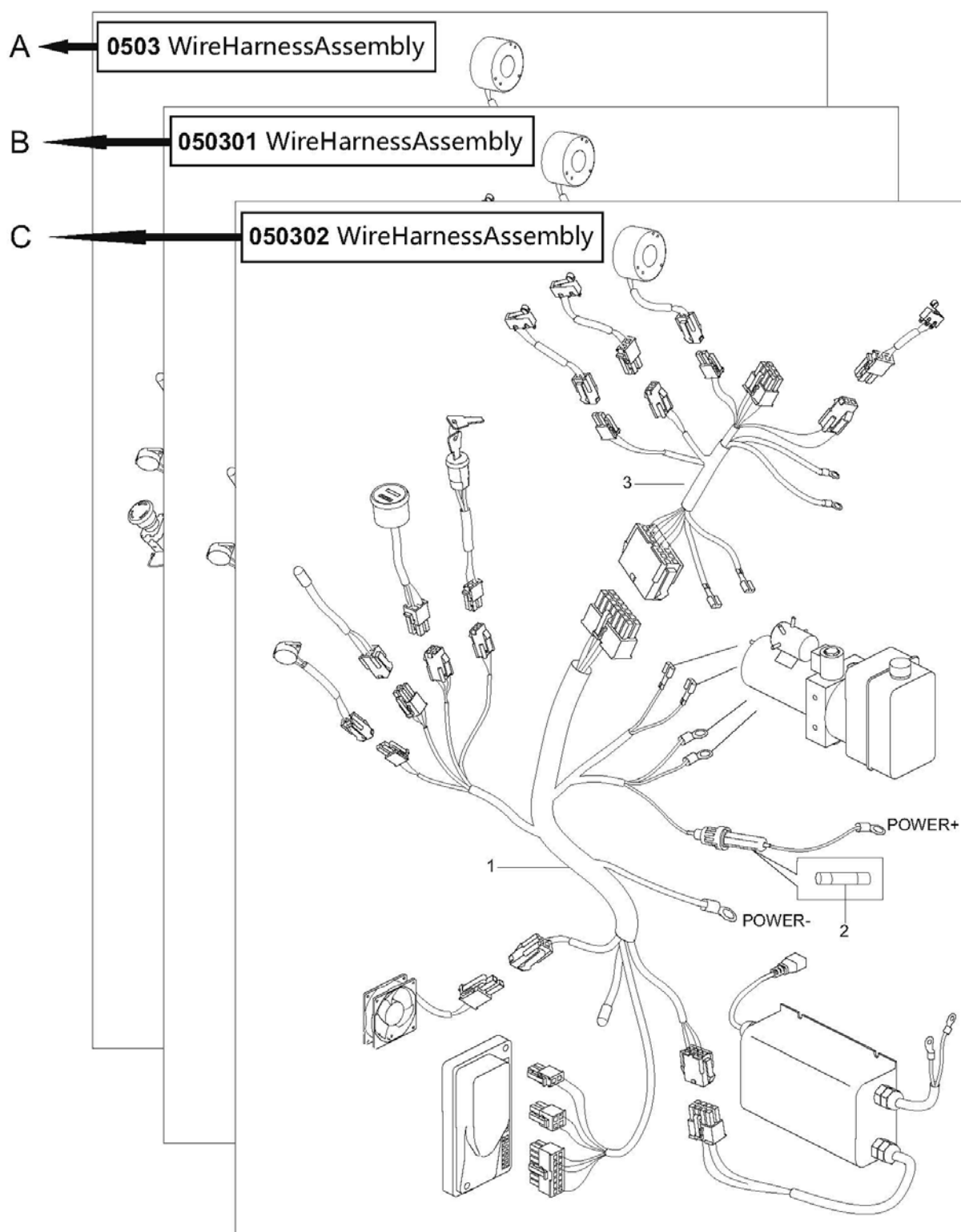


3) 1 (数字) + 8 (数字)

适用时间: 2015 年 6 月 1 日至今



帮助 2:



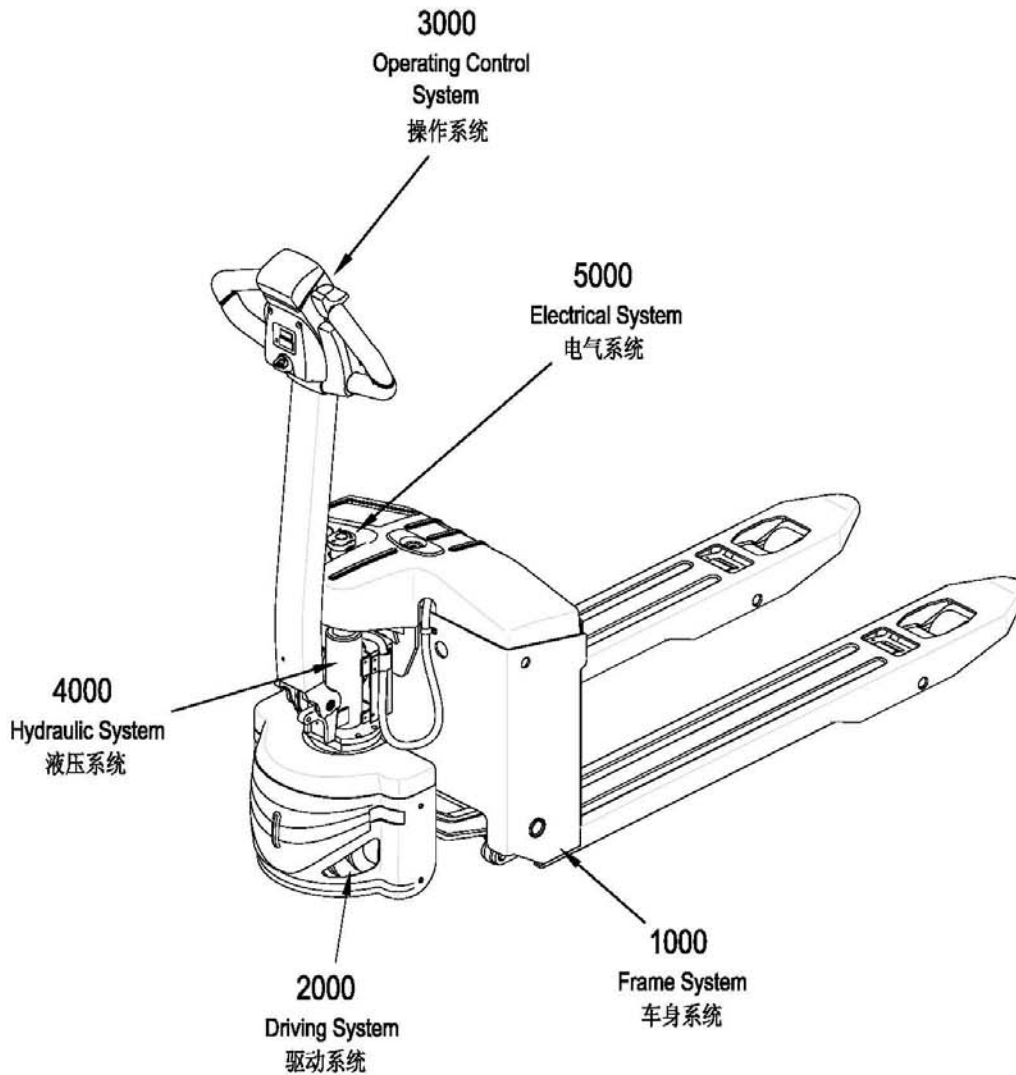
A: 章节 0503 表示原始版本;

B: 章节 050301 表示在原始版本 (章节 0503) 上零件有所变更;

C: 章节 050302 表示在变更版本 (章节 050301) 上零件有所变更。

当您订购零件时, 请根据每个版本中零件的适用时间来判断您所选购车型的零件信息。

Major Assemblies



WARNING: Note that illustrations of assemblies and components may not necessarily conform to the exact installation as they appear on your truck. But this Manual can help you locate specific parts information of your truck.

注意: 表达在零件目录上的总成和结构内容可能不会完全地出现在您的车型上，但是您可以在零件目录中查询到您所选购车型的零件信息。

Index 目录

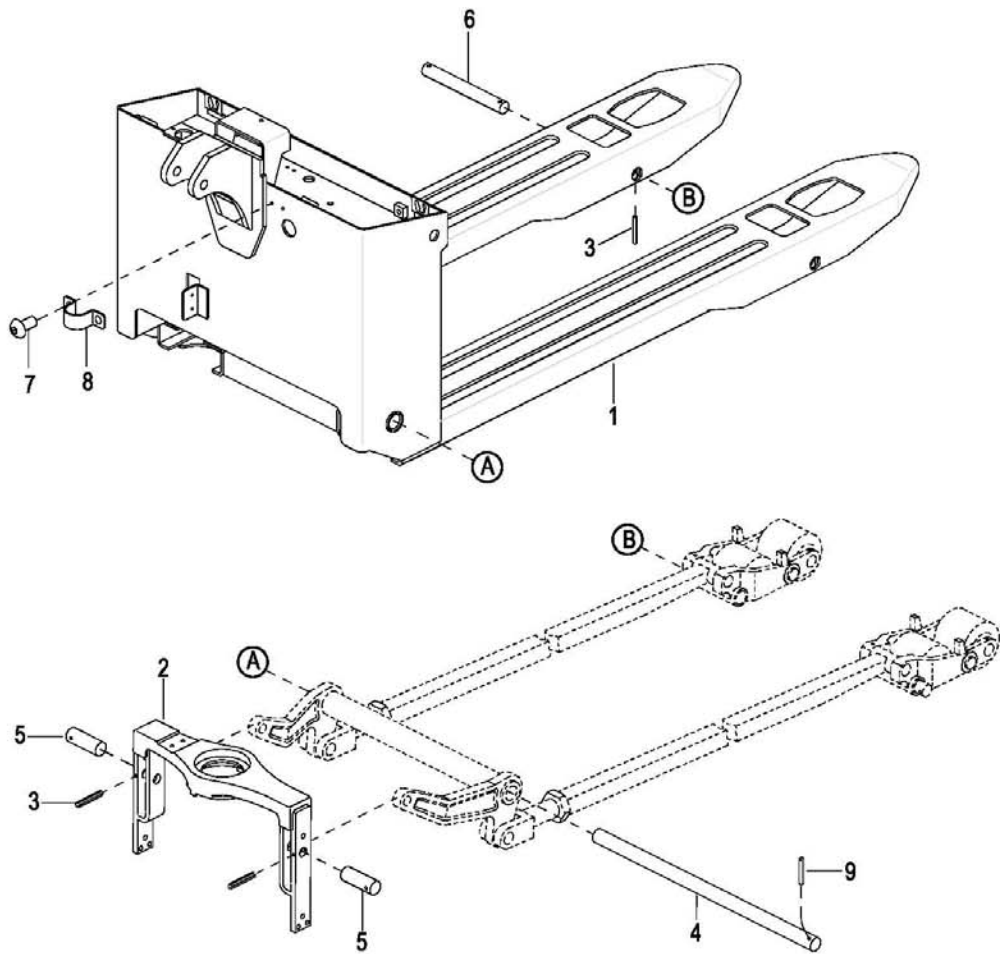
1000Frame System 车身系统	
0101 Frame System 车身系统.....	3
0102 Connecting Link (Double Wheel)连杆总成 (双轮)	5
0103 Connecting Link (Single Wheel)连杆总成 (单轮)	8
0104 Cover Assembly 外罩总成.....	10
2000Driving System 驱动系统	
0201 Driving System 驱动系统.....	13
3000Operating Control System 操作系统	
0301 Operating Control System 操作系统.....	16
0302 Control Pod Assembly 操作手柄头总成.....	18
0303 Upper Cover Assembly 上盖总成.....	20
0304 Button Reverser Assembly 紧急反向开关总成.....	22
4000Hydraulic System 液压系统	
0401 Hydraulic System 液压系统.....	25
0402 Lifting Cylinder 起升油缸.....	29
0403 Pump & Motor Assembly 液压站总成.....	33
5000Electrical System 电气系统	
0501 Electrical System 电气系统.....	36
0502 Wire Harness Assembly 线束总成.....	38
0503 Cable Assembly 电缆总成.....	44

1000

Frame System

车身系统

0101 Frame System



0101 Frame System

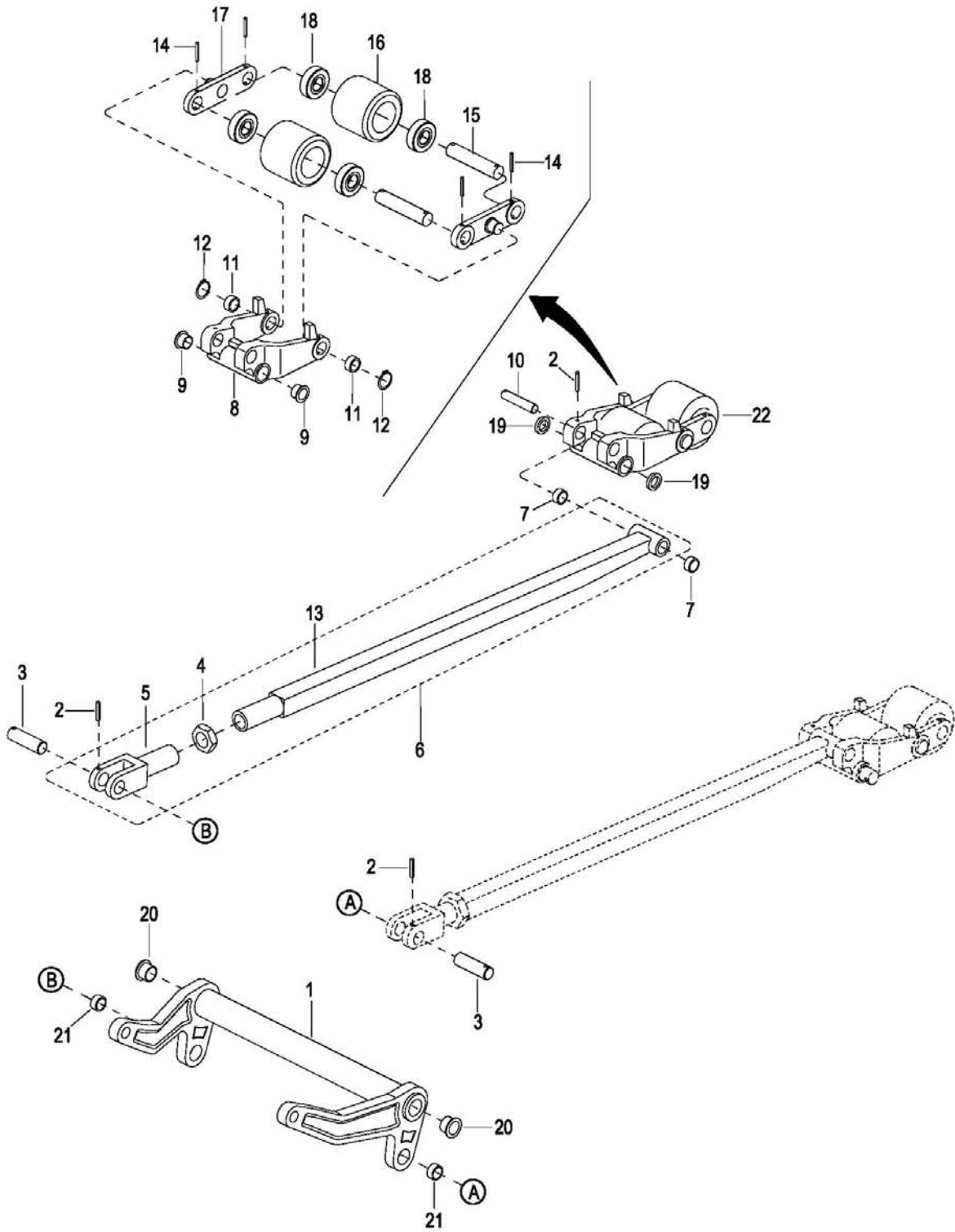
车身系统

Index 序号	Part No. 零件编号	Part Name 零件名称		No. 数量	Applied Date 适用日期	Remark 备注
1	See Form 1.1	Front Frame	前车架	1		
2	1121-120000-00	Back Frame	后车架	1		
3	01 0000-000708-00	Round Pin $\phi 5 \times 35$	弹性圆柱销	4	-424150330	
	02 0000-001456-00	Round Pin $\phi 5 \times 35$	卷制弹性圆柱销	4	424150331-	
4	See Form 1.1	Long Shaft	长支撑轴 见表 1.1	1		
5	1121-130002-00	Short Shaft	短销轴	2		
6	1114-130002-00	Shaft	轮架安装轴	2		
7	0000-000651-00	Screw M4 \times 8	螺钉	2		
8	1115-500002-00	Harness Clamp	线箍	1		
9	0000-000410-00	Round Pin $\phi 6 \times 40$	卷制弹性圆柱销	1		

Form 1.1

Frame Width (W) 车身宽度		Fork Length (L) 叉脚长度		Long Shaft 长支撑轴 (Item 4 , Chapter 0101)	Fork Frame 前车架 (Item 1 , Chapter 0101)	Applied Date 适用日期	Remark 备注
mm	in	mm	in				
560	22	1150	45	1114-130001-00	1114-110000-00-01	-424150048	
					1114-110000-0C-01	424150049-	
685	27	1150	45	1114-130001-10	1114-110000-10-01	-424150048	
					1114-110000-1C-01	424150049-	
		1220	48	1114-130001-10	1114-110000-10-02	-424150048	
					1114-110000-1C-02	424150049-	

0102 Connecting Link (Double Wheel)



0102 Connecting Link (Double Wheel)

连杆总成 (双轮)

Index	Part No.	Part Name	No.	Applied Date	Remark
序号	零件编号	零件名称	数量	适用日期	备注
1	See Form 1.2	Down Link	1		
2	01 0000-000708-00	Round Pin $\phi 5 \times 35$	4	-424150330	
	02 0000-001456-00	Round Pin $\phi 5 \times 35$	4	424150331-	
3	1121-130003-00	Shaft	2		
4	0000-000101-00	Nut M22 \times 1.5	2		
5	1121-132001-00	Connector	2		
6	See Form 1.3	Long Link	2		
7	0000-000907-00	Bushing 2020	4		
8	1115-130005-4A	Wheel Bracket	2		
9	0000-000908-00	Bushing 2015F	4		
10	1115-130003-00	Shaft	2		
11	0000-000809-00	Bushing 1815	4		
12	0000-000653-00	Snap Ring For Hole $\phi 18$	4		
13	See Form 1.3	Long rod	2		
14	01 0000-001023-00	Round Pin $\phi 4 \times 35$	8	-424150330	
	02 0000-001457-00	Round Pin $\phi 4 \times 35$	8	424150331-	
15	1115-130007-0A	Shaft	4		
16	1114-133001-00	Load Wheel	4		
17	1115-130006-0A	Splint	4		
18	0000-000020-00	Bearing 6204-2Z	4		
19	1115-130008-00	Washer	4		
20	0000-001241-00	Bushing 2520F	2		
21	0000-000011-00	Bushing 2015	2		
22	1114-130005-00-B	Wheel Bracket Assembly	2		

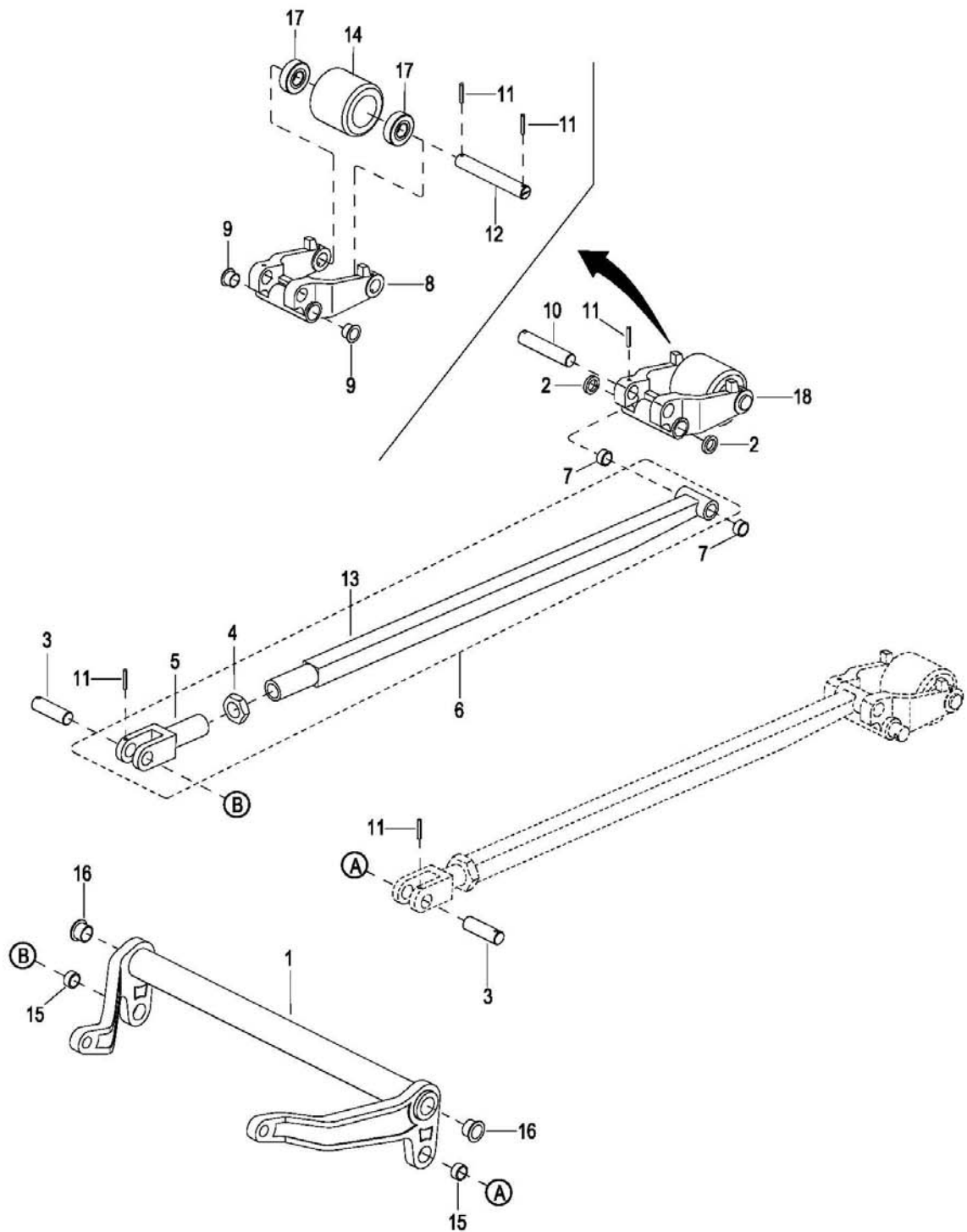
Form 1.2

Frame Width (W)		Down Link
车身宽度		下连杆
mm	in	(Item 1 , Chapter 0102)
560	22	1121-131000-00
685	27	1121-131000-10

Form 1.3

Fork Length (L) 叉脚长度		Long Link 可调长连杆	Long Rod 长杆	Remark 备注
mm	in	(Item 6 , Chapter 0102)	(Item 13 ,Chapter 0102)	
1150	45	1114-131000-00-01	1115-132200-00-09	Cancelled/取消
			1114-131100-0A-01	
1220	48	1114-131000-00-02	1115-132200-00-04	Cancelled/取消
			1114-131100-0A-02	
1070	42	1114-131000-00-03	1115-132200-00-03	Cancelled/取消
			1114-131100-0A-03	
1000	39	1114-131000-00-04	1115-132200-00-02	Cancelled/取消
			1114-131100-0A-04	
915	36	1114-131000-00-05	1114-131100-00-01	Cancelled/取消
			1114-131100-0A-05	
1100	43	1114-131000-00-06	1121-132200-00-01	Cancelled/取消
			1114-131100-0A-06	

0103 Connecting Link (Single Wheel)

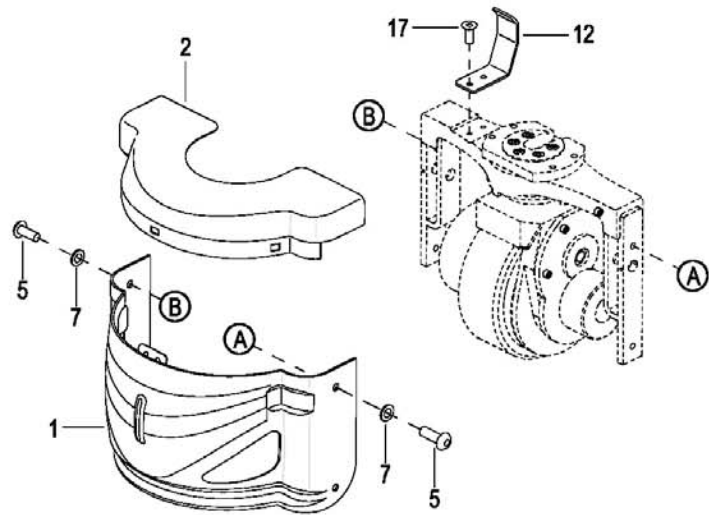
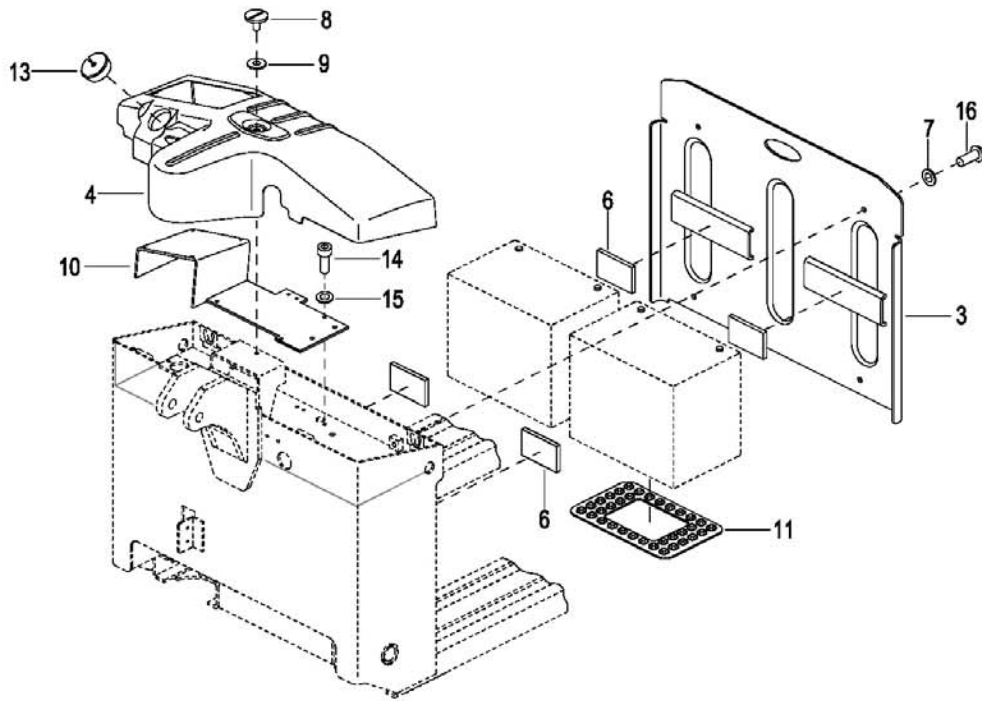


0103 Connecting Link (Single Wheel)

连杆总成（单轮）

Index	Part No.	Part Name	No.	Applied Date	Remark
序号	零件编号	零件名称	数量	适用日期	备注
1	See Form 1.2	Down Link	1		In Chapter 0102
2	1115-130008-00	Washer	4		
3	1121-130003-00	Shaft	2		
4	0000-000101-00	Nut M22×1.5	2		
5	1121-132001-00	Connector	2		
6	See Form 1.3	Long Link	2		In Chapter 0102
7	0000-000907-00	Bushing 2020	4		
8	1115-130005-4A	Wheel Bracket	2		
9	0000-000908-00	Bushing 2015F	4		
10	1115-130003-00	Shaft	2		
11	01 0000-000708-00	Round Pin $\phi 5 \times 35$	4	-424150330	
	02 0000-001456-00	Round Pin $\phi 5 \times 35$	4	424150331-	
12	1115-130007-40	Shaft	2		
13	See Form 1.3	Long rod	2		In Chapter 0102
14	1114-133001-10	Load Wheel	2		
15	0000-000011-00	Bushing 2015	2		
16	0000-001241-00	Bushing 2520F	2		
17	0000-000020-00	Bearing 6204-2Z	4		
18	1114-130005-10-B	Wheel Bracket Assembly	2		

0104 Cover Assembly



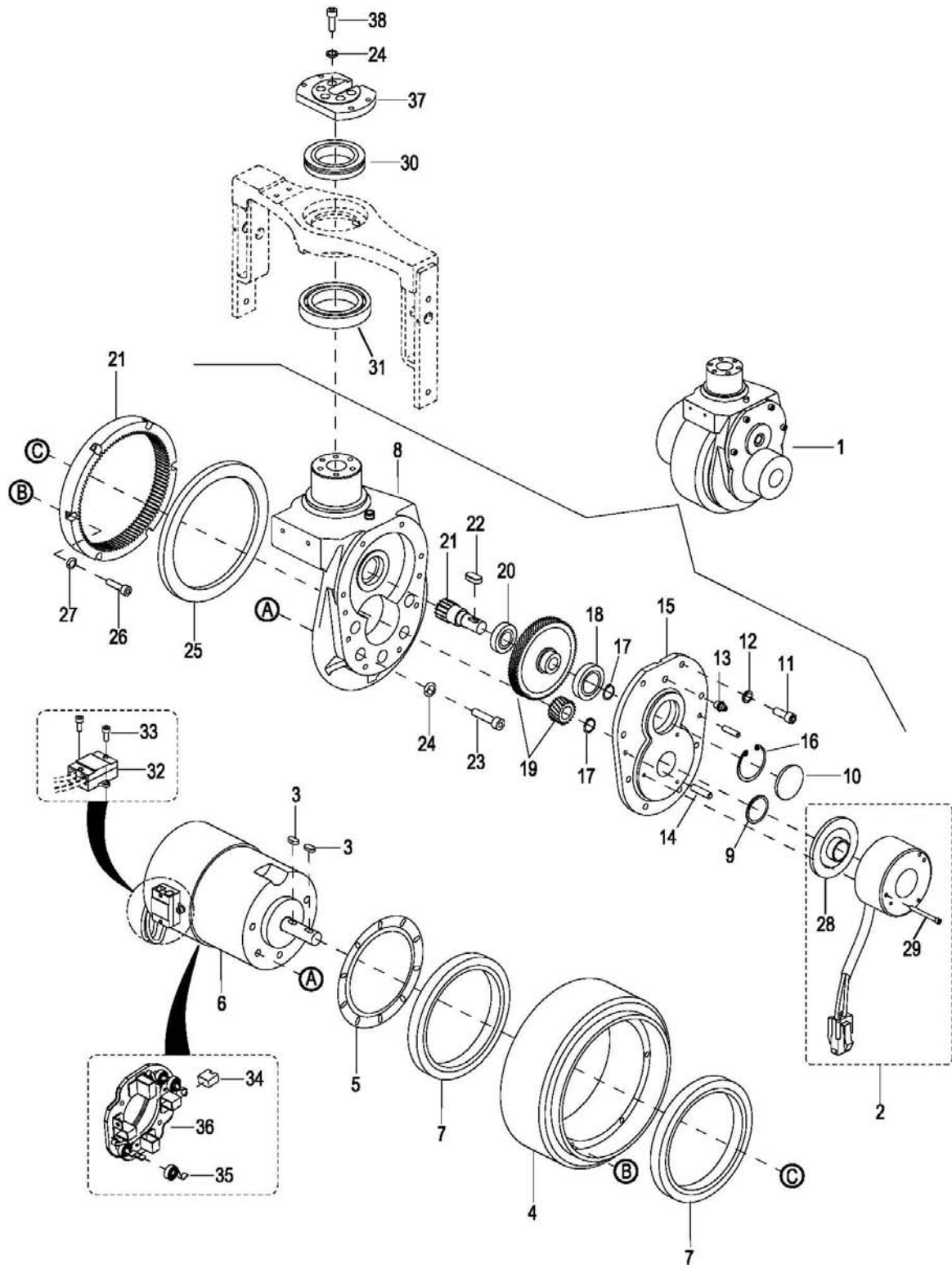
0104 Cover Assembly

外罩总成

Index	Part No.	Part Name	No.	Applied Date	Remark
序号	零件编号	零件名称	数量	适用日期	备注
1	1121-141000-00	Lower Cover	1		
2	1121-140001-00	Upper Cover	1		
3	1114-141000-00	Front Cover	1		
4	1114-140001-00	Cover	1		
5	0000-000712-00	Screw M8×20	4		
6	1115-100003-f0	Rubber Cushion	4		
7	0000-000176-00	Flatwasher ø8	8		
8	1120-150004-00	Screw M6×25	1		
9	2214-150002-00	Washer	1		
10	01 1114-510000-00	Plate	1	-424150048	
	02 1114-550000-00	Plate	1	424150049-	
11	1115-100005-00	Rubber Cushion	2		
12	1114-500001-00	Baffle	1		
13	1115-120002-00	Charger Cap	1		
14	0000-000055-00	Screw M6×16	4		
15	0000-000380-00	Flatwasher ø6	4		
16	0000-000712-00	Screw M8×20	4		
17	0000-000126-00	Screw M6×16	2		

2000
Driving System
驱动系统

0201 Driving System



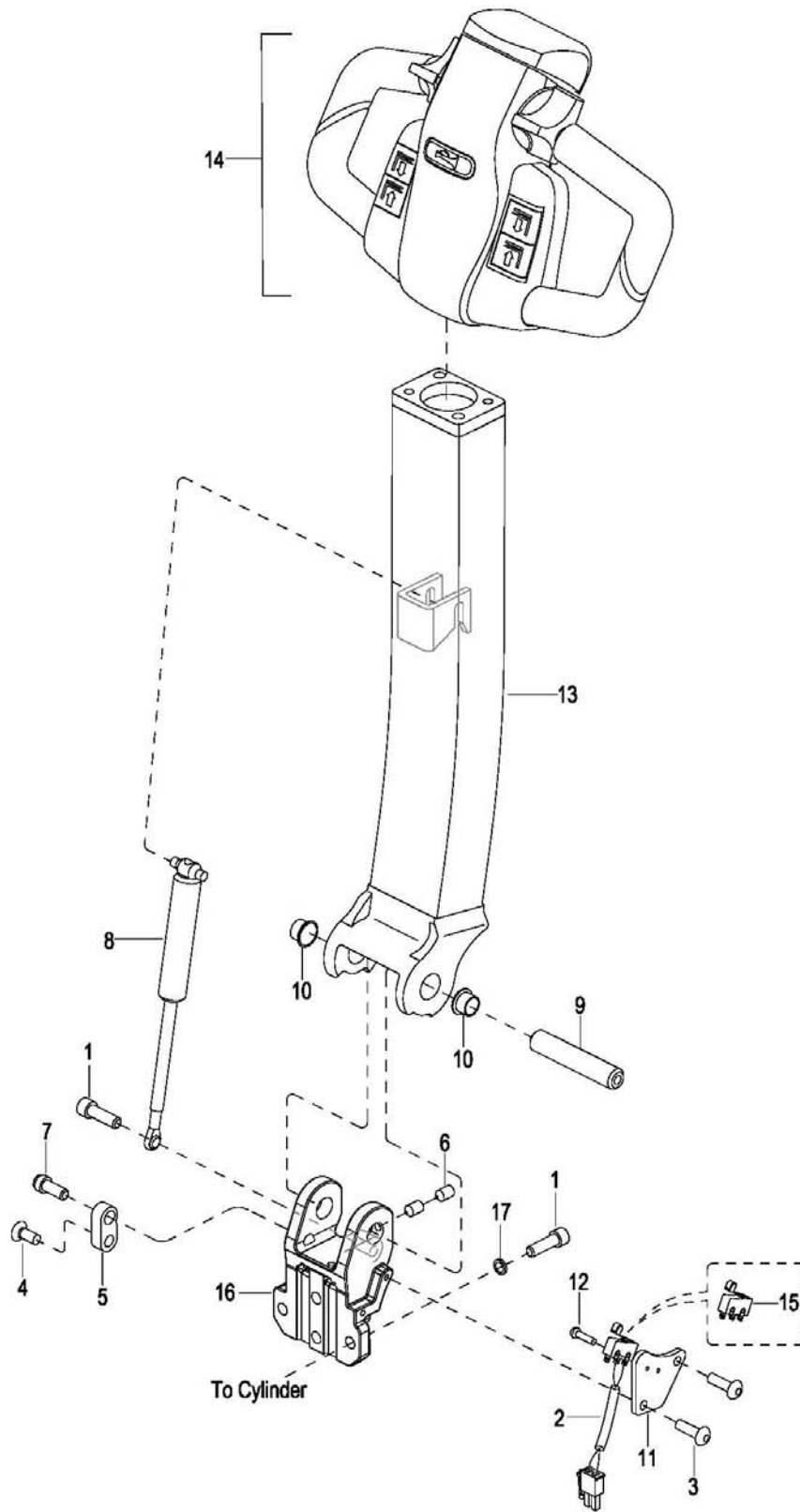
0201 Driving System

驱动系统

Index	Part No.	Part Name	No.	Applied Date	Remark
序号	零件编号	零件名称	数量	适用日期	备注
1	1121-200000-00	Driving Assembly	1		Including Index 2—27
2	1115-520012-00	Brake Assembly	1		
3	0000-000662-00	Flat Key 5×5×12	2		
4	1115-220000-00	Driving Wheel	1		
5	1115-200010-00	Bearing Baffle	1		
6	1115-250000-00	Motor	1		
7	0000-000663-00	Bearing 61824-2RS	2		
8	1121-210001-00	Gear Case	1		
9	0000-000671-00	Oil Seal $\phi 16 \times 28 \times 7$	1		
10	1115-200007-00	Cap	1		
11	0000-000386-00	Screw M6×20	8		
12	0000-000056-00	Lockwasher $\phi 6$	8		
13	0000-000013-00	Grease Fitting M8	1		
14	0000-000704-00	Pin $\phi 6 \times 20$	2		
15	1115-200001-00	Gear Cover	1		
16	0000-000658-00	Snap Ring For Hole $\phi 42$	1		
17	0000-000659-00	Snap Ring $\phi 15$	2		
18	0000-000667-00	Bearing 61905Z	1		
19	1115-200004-00	Helical Gear	1		
	1115-200005-00	Helical Gear	1		
20	0000-000680-00	Bearing 16003Z	1		
21	1115-200003-00	Gear	1		
	1115-200002-00	Gear Loop	1		
22	0000-000660-00	Key 5×5×18	1		
23	0000-000026-00	Screw M8×30	5		
24	0000-000159-00	Lockwasher $\phi 8$	10		
25	0000-000670-00	Oil Seal $\phi 155 \times 172 \times 10$	1		
26	0000-000661-00	Screw M5×20	6		
27	0000-000206-00	Lockwasher $\phi 5$	6		
28	1115-240001-00	Brake lining	1		
29	0000-000665-00	Screw M4×45	3		
30	0000-001230-00	Bearing 51113	1		
31	0000-001231-00	Bearing 6013-Z	1		
32	1115-231000-00	Bracket	1		
33	0000-000004-00	Screw M5×12	2		
34	1115-250001-00	Brush	4		
35	1115-250002-00	Brush Spring	4		
36	1115-250003-00	Holder Brush	1		
37	1121-200001-00	Connecting Plate	1		
38	0000-000151-00	Screw M8×25	5		

3000
Operating Control System
操作系统

0301 Operating Control System

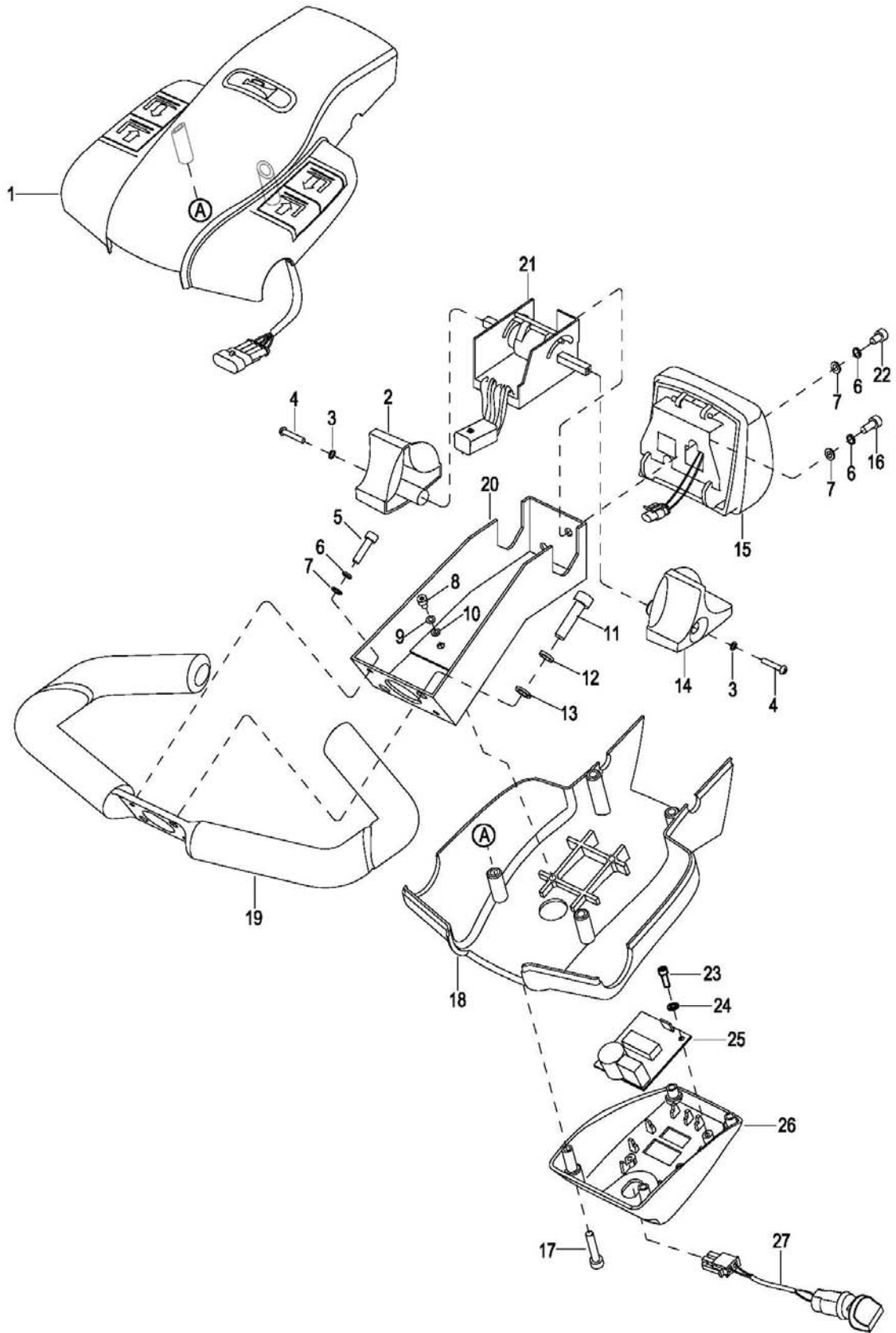


0301 Operating Control System

操作系统

Index	Part No.	Part Name		No.	Applied Date	Remark
序号	零件编号	零件名称		数量	适用日期	备注
1	0000-000322-00	Screw M8×25	螺钉	5		
2	1115-520009-0A	Inching Switch Assembly	互锁开关总成	1		
3	0000-000651-00	Screw M4×8	螺钉	4		
4	0000-001101-00	Screw M8×20	螺钉	1		
5	1115-300003-00	Proximity Block	限位块	1		
6	0000-001019-00	Screw M6×6	紧固螺钉	2		
7	1115-300004-00	Screw	限位改制螺钉	1		
8	1120-320000-00	Gas Spring	气弹簧总成	1		
9	1115-300002-00	Shaft	关节轴	1		
10	0000-000677-00	Bushing 1610F	自润滑翻边轴承	2		
11	1115-500001-00	Spacer	互锁开关安装板	1		
12	0000-000989-00	Screw M2×12	螺钉	2		
13	1115-310000-00	Control Handle	手柄管	1		
14	1114-340000-00-B	Control Pod Assembly	手柄头总成 见 0302	1		With Wire
15	1220-560001-00	Inching Switch I	微动开关 I	1		
16	1114-300001-00	Bracket	关节座	1	E24140232-	
17	0000-000159-00	Lockwasher ø8	弹垫	4	E24140232-	

0302 Control Pod Assembly

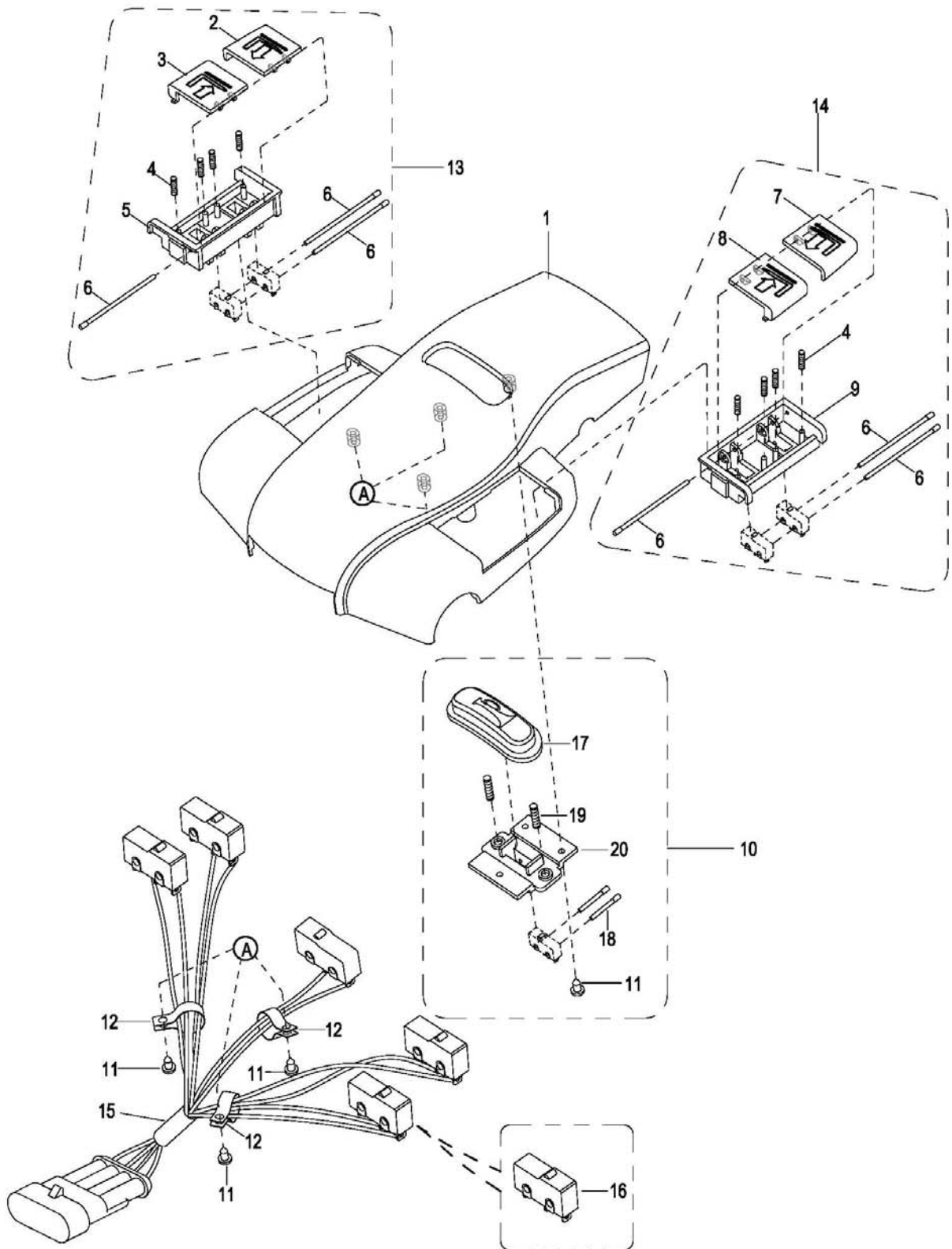


0302 Control Pod Assembly

操作手柄头总成

Index	Part No.	Part Name	No.	Applied Date	Remark
序号	零件编号	零件名称	数量	适用日期	备注
1	1120-342000-00-B	Upper Cover Assembly See 0303	1		With Wire
2	1120-340005-00	Travelling Knob R	1		
3	0000-000038-00	Lockwasher ø3	2		
4	0000-000037-00	Screw M3×12	2		
5	0000-000004-00	Screw M5×12	2		
6	0000-000206-00	Lockwasher ø5	4		
7	0000-000390-00	Flatwasher ø5	4		
8	0000-000088-00	Screw M4×8	2		
9	0000-000122-00	Lockwasher ø4	2		
10	0000-000702-00	Flatwasher ø4	2		
11	0000-000322-00	Screw M8×25	2		
12	0000-000159-00	Lockwasher ø8	2		
13	0000-000176-00	Flatwasher ø8	2		
14	1120-340003-00	Travelling Knob L	1		
15	1120-343000-00-B	Button Reverser Assembly See 0304	1		With Wire
16	0000-000004-00	Screw M5×12	1		
17	0000-001322-00	Screw M5×50	4		
18	1114-310002-00	Cover	1		
19	1120-341000-00	Gripe	1		
20	1120-340001-00	Pod	1		
21	1220-520008-0C	Accelerator Assembly	1		
22	0000-000010-00	Screw M5×6	1		
23	0000-000666-00	Screw M3×8	2		
24	0000-000991-00	Flatwasher ø3	2		
25	01 1114-500005-00	Power Module	1	-E2321553	
	02 1114-500007-00	Power Module	1	E2321554-	
26	1114-310001-10	Bottom Cover	1		
27	01 1115-520019-00	2-Way Key Switch Assembly	1		Cancelled
	02 1115-520019-0A	2-Way Key Switch Assembly	1		

0303 Upper Cover Assembly

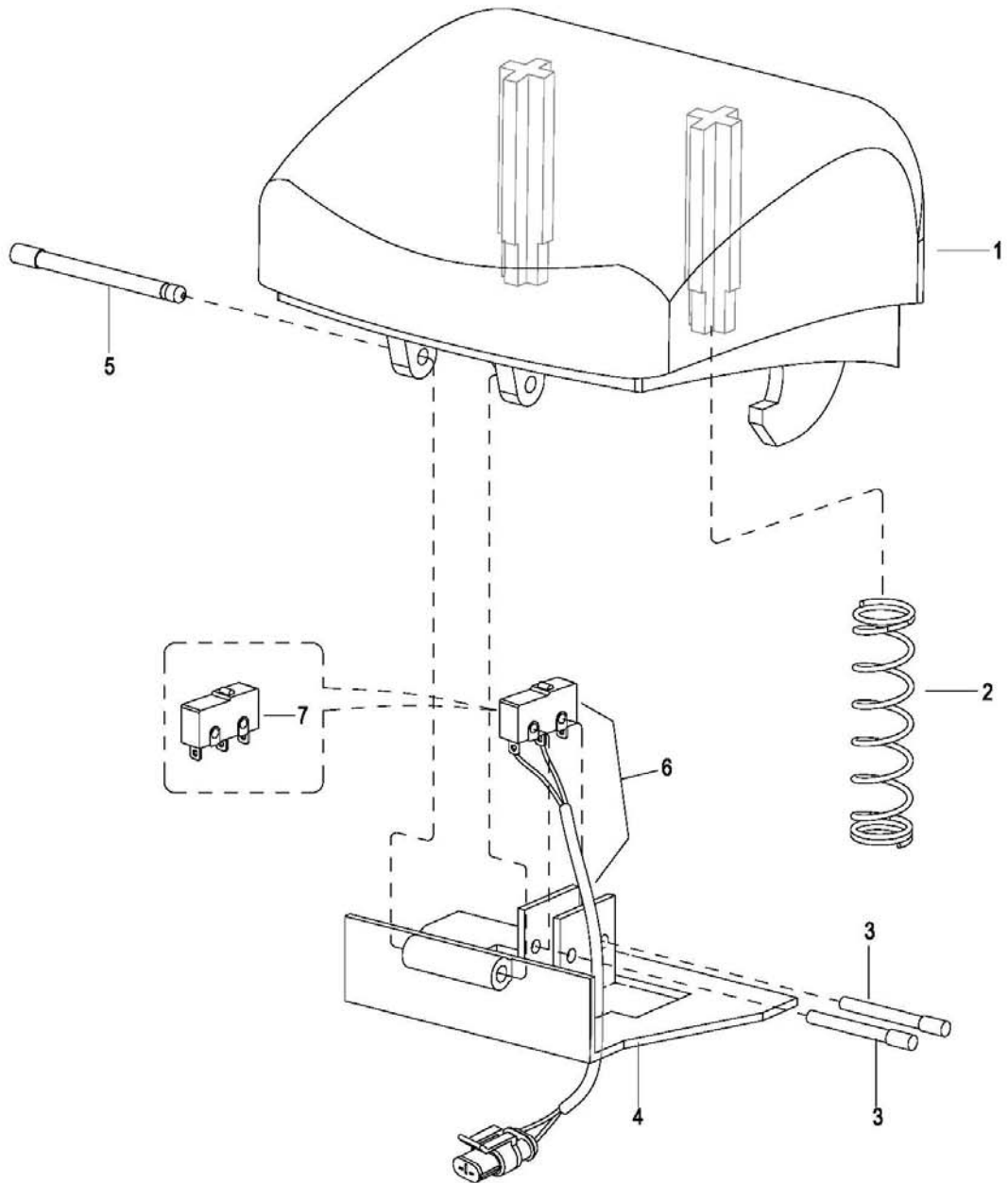


0303 Upper Cover Assembly

上盖总成

Index	Part No.	Part Name		No.	Applied Date	Remark
序号	零件编号	零件名称		数量	适用日期	备注
1	1120-342001-00	Upper Cover	上盖	1		
2	1120-342203-00	Button For Lifting(R)	起升按钮右	1		
3	1120-342202-00	Button For Lowering(R)	下降按钮右	1		
4	1120-342102-00	Spring	弹簧	8		
5	1120-342201-00	Button Bracket(R)	开关座右	1		
6	1120-342105-00	Pin	销轴	6		
7	1120-342104-00	Button For Lifting(L)	起升按钮左	1		
8	1120-342103-00	Button For Lowering(L)	下降按钮左	1		
9	1120-342101-00	Button Bracket (L)	开关座左	1		
10	1120-342300-00	Horn Button Assembly	喇叭开关盒总成	1		
11	0000-000039-00	Screw ST3.5×9.5	螺钉	6		
12	0000-000490-00	Line Clamp	线夹	3		
13	1120-342200-00	Lift And Lower Box(R) Assembly	右升降开关盒总成	1		
14	1120-342100-00	Lift And Lower Box(L) Assembly	左升降开关盒总成	1		
15	1220-520006-0C	Buttons Assembly	提升、下降、喇叭按钮线束	1		
16	1220-560002-00	Inching Switch II	微动开关 II	5		
17	1120-342002-00	Horn Button	喇叭按钮	1		
18	1120-342005-00	Pin	销轴	2		
19	1120-342003-00	Spring	弹簧	2		
20	1120-342004-00	Button Bracket	喇叭开关支架	1		

0304 Button Reverser Assembly



0304 Button Reverser Assembly

紧急反向开关总成

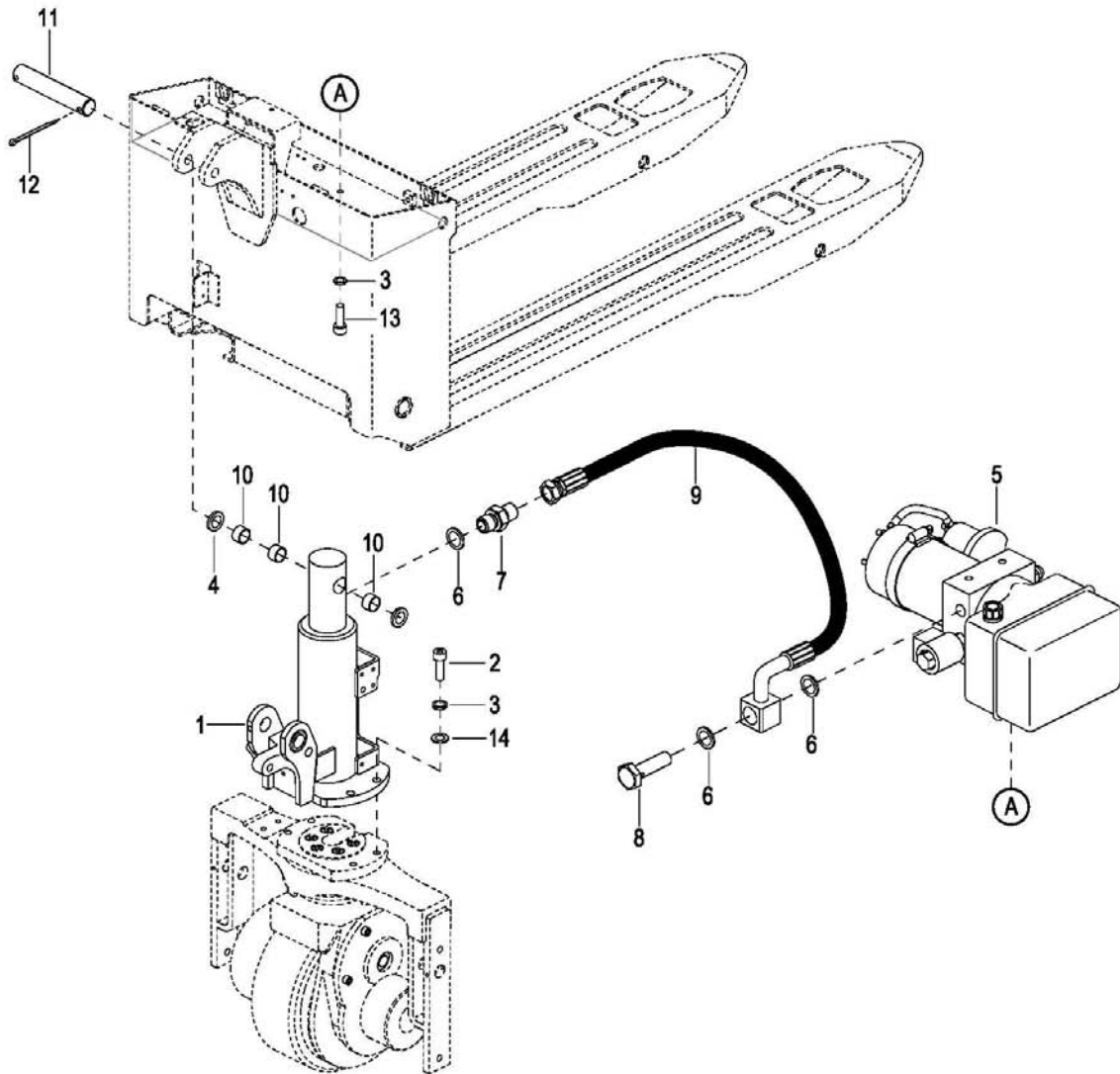
Index	Part No.	Part Name		No.	Applied Date	Remark
序号	零件编号	零件名称		数量	适用日期	备注
1	1120-343002-00	Cover	紧急反向开关盖	1		
2	1120-343003-00	Spring	弹簧	2		
3	1120-342005-00	Pin	销轴	2		
4	1120-343001-0A	Bracket	紧急反向开关板	1		
5	1120-343004-00	Pin	销	1		
6	1220-520005-0C	Reversing Switch Wire	反向开关线束	1		
7	1220-560002-00	Inching Switch II	微动开关 II	1		

4000

Hydraulic System

液压系统

0401 Hydraulic System

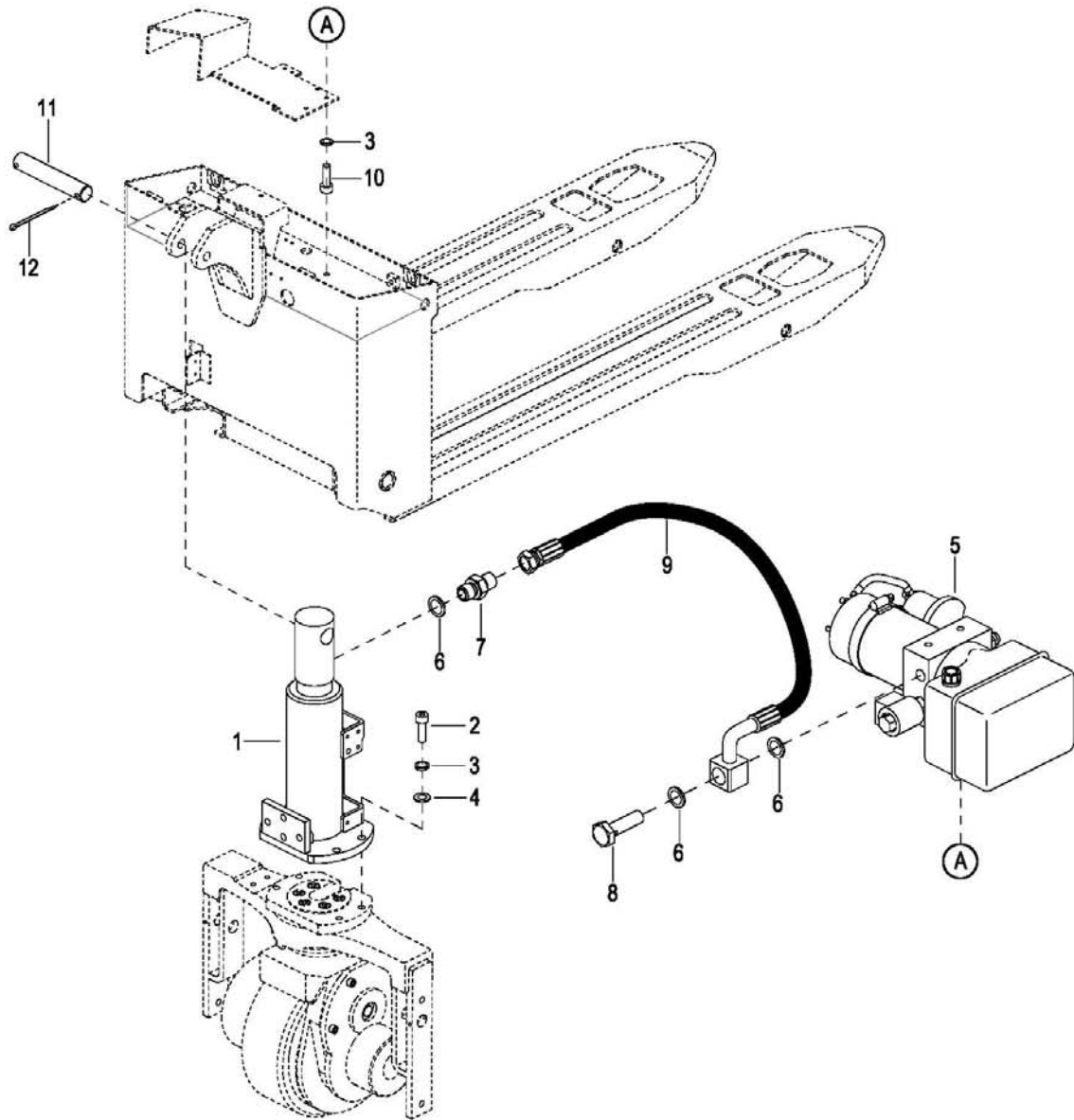


0401 Hydraulic System

液压系统

Index	Part No.	Part Name	No.	Applied Date	Remark
序号	零件编号	零件名称	数量	适用日期	备注
1	1114-410000-0A	Lifting Cylinder See 0402	1	-E24140231	
2	0000-000321-00	Screw M8×20	4		
3	0000-000159-00	Lockwasher ø8	6		
4	1114-400002-00	Washer	2	-E24140231	
5	1114-420000-00	Pump & Motor Assembly See 0403	1		
6	0000-000044-00	Washer ø14	3		
7	2701-141400-00	Connector M14×1.5- M14×1.5	1		
8	2401-143500-00	Bolt M14×35	1		
9	1114-430000-00	Hose	1		
10	0000-001130-00	Bushing 1612	3	-E24140231	
11	1114-400001-0A	Pin	1	-E24140231	
12	0000-001340-00	Cotter Pin 4×30	2		
13	0000-000109-00	Screw M8×16	2		
14	0000-000194-00	Flatwasher ø8	4		

040101 Hydraulic System

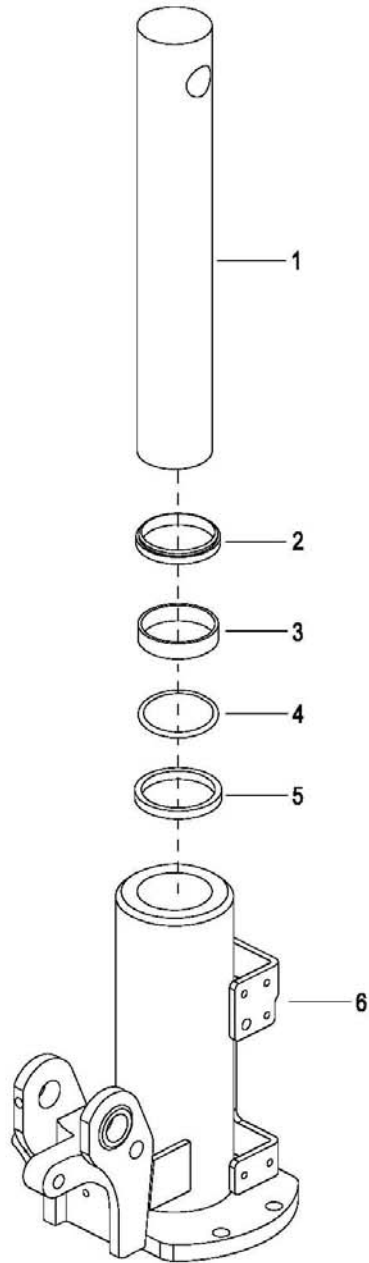


040101 Hydraulic System

液压系统

Index	Part No.	Part Name	No.	Applied Date	Remark
序号	零件编号	零件名称	数量	适用日期	备注
1	1114-410000-0B	Lifting Cylinder See 040201	1	E24140232-	
2	0000-000321-00	Screw M8×20	4		
3	0000-000159-00	Lockwasher ø8	6		
4	0000-000194-00	Flatwasher ø8	4		
5	1114-420000-00	Pump & Motor Assembly See 0403	1		
6	0000-000044-00	Washer ø14	3		
7	2701-141400-00	Connector M14×1.5- M14×1.5	1		
8	2401-143500-00	Bolt M14×35	1		
9	1114-430000-00	Hose	1		
10	0000-000109-00	Screw M8×16	2		
11	1114-400001-0C	Pin	1	E24140232-	
12	0000-001340-00	Cotter Pin 4×30	2		

0402 Lifting Cylinder

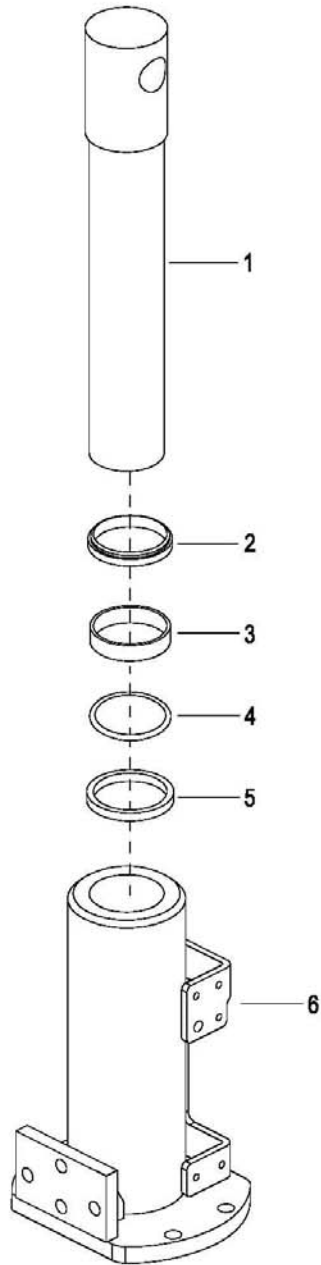


0402 Lifting Cylinder

起升油缸

Index	Part No.	Part Name	No.	Applied Date	Remark
序号	零件编号	零件名称	数量	适用日期	备注
1	1114-412000-00	Rod Piston	1	-E24140231	
2	0000-000672-00	Ring Wiper 40×48×5-6.5	1		
3	1114-410001-00	Ring Back Up 40×50×9.7	2		
4	0000-000673-00	O-ring 45×3.1	1		
5	0000-000512-00	Rod Packing 40×50×6	1		
6	1114-411000-0A	Cylinder	1	-E24140231	
KIT	1114-ZZG-0A	Seal Kit For Lifting Cylinder (Includes 2, 4, 5)	1		

040201 Lifting Cylinder

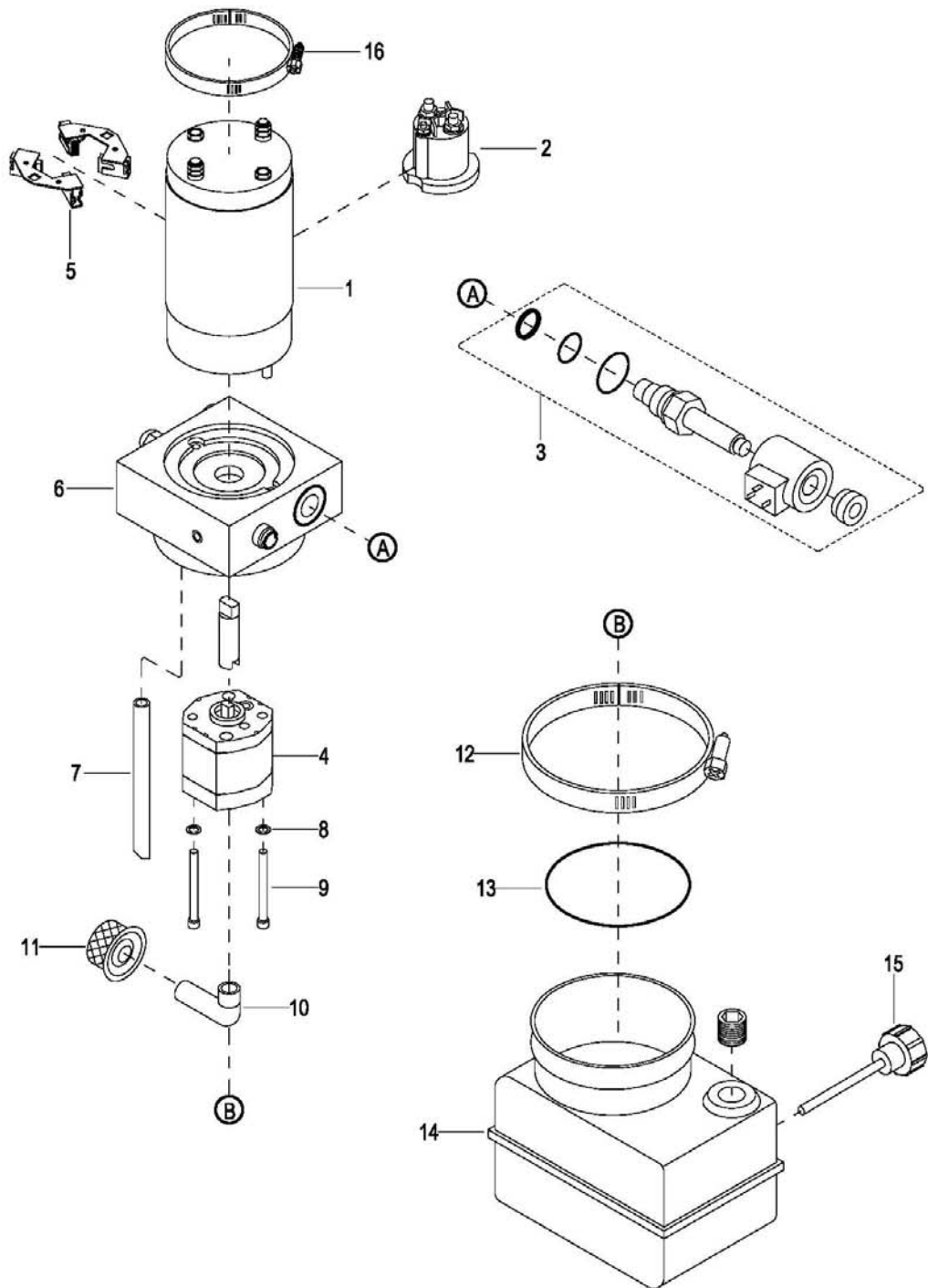


040201 Lifting Cylinder

起升油缸

Index	Part No.	Part Name	No.	Applied Date	Remark
序号	零件编号	零件名称	数量	适用日期	备注
1	1114-412000-0B	Rod Piston	1	E24140232-	
2	0000-000672-00	Ring Wiper 40×48×5-6.5	1		
3	1114-410001-00	Ring Back Up 40×50×9.7	2		
4	0000-000673-00	O-ring 45×3.1	1		
5	0000-000512-00	Rod Packing 40×50×6	1		
6	1114-411000-0B	Cylinder	1	E24140232-	
KIT	1114-ZZG-0A	Seal Kit For Lifting Cylinder (Includes 2, 4, 5)	1		

0403 Pump & Motor Assembly



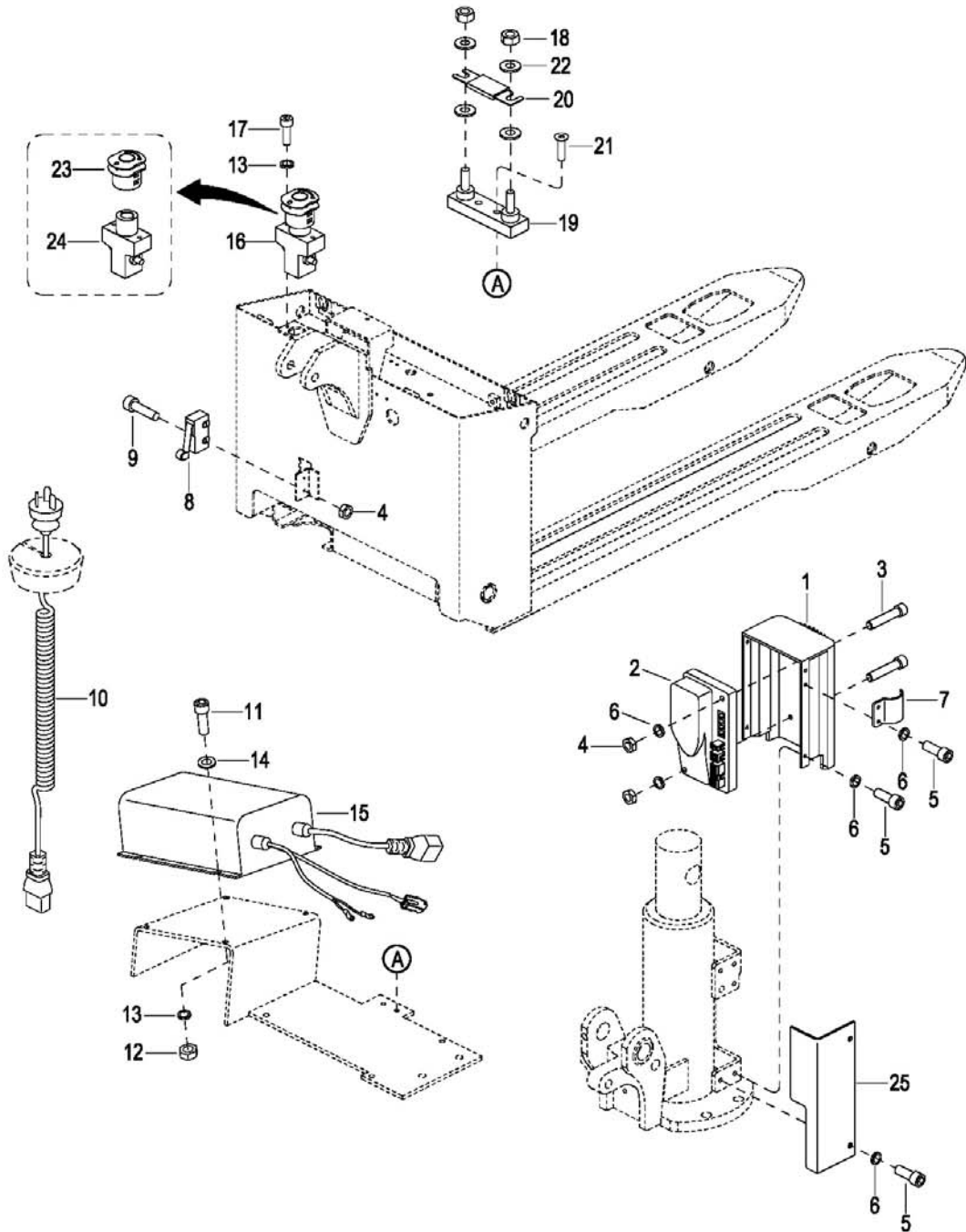
0403 Pump & Motor Assembly

液压站总成

Index	Part No.	Part Name	No.	Applied Date	Remark
序号	零件编号	零件名称	数量	适用日期	备注
1	1115-560003-00	Motor	1		
2	1115-560002-00	Contactora	1		
3	1115-560017-00	Solenoid Valve	1		
4	1115-560011-00	Pump	1		
5	1115-561001-00	Brush Assembly	2		
6	1115-560027-00	Adapter	1		
7	1115-560009-00	Return Pipe	1		
8	1115-560012-00	Washer ø5	2		
9	1115-560013-00	Screw M5×70	2		
10	1115-560014-00	Suction Pipe	1		
11	1115-560015-00	Oil Filter	1		
12	1115-560018-00	Clamp ø100	1		
13	1115-560019-00	O-Ring ø85×3.0	1		
14	1114-420001-00	Tank	1		
15	1115-560024-00	Air Cleaner	1		
16	1115-560001-00	Clamp	1		

5000
Electrical System
电气系统

0501 Electrical System

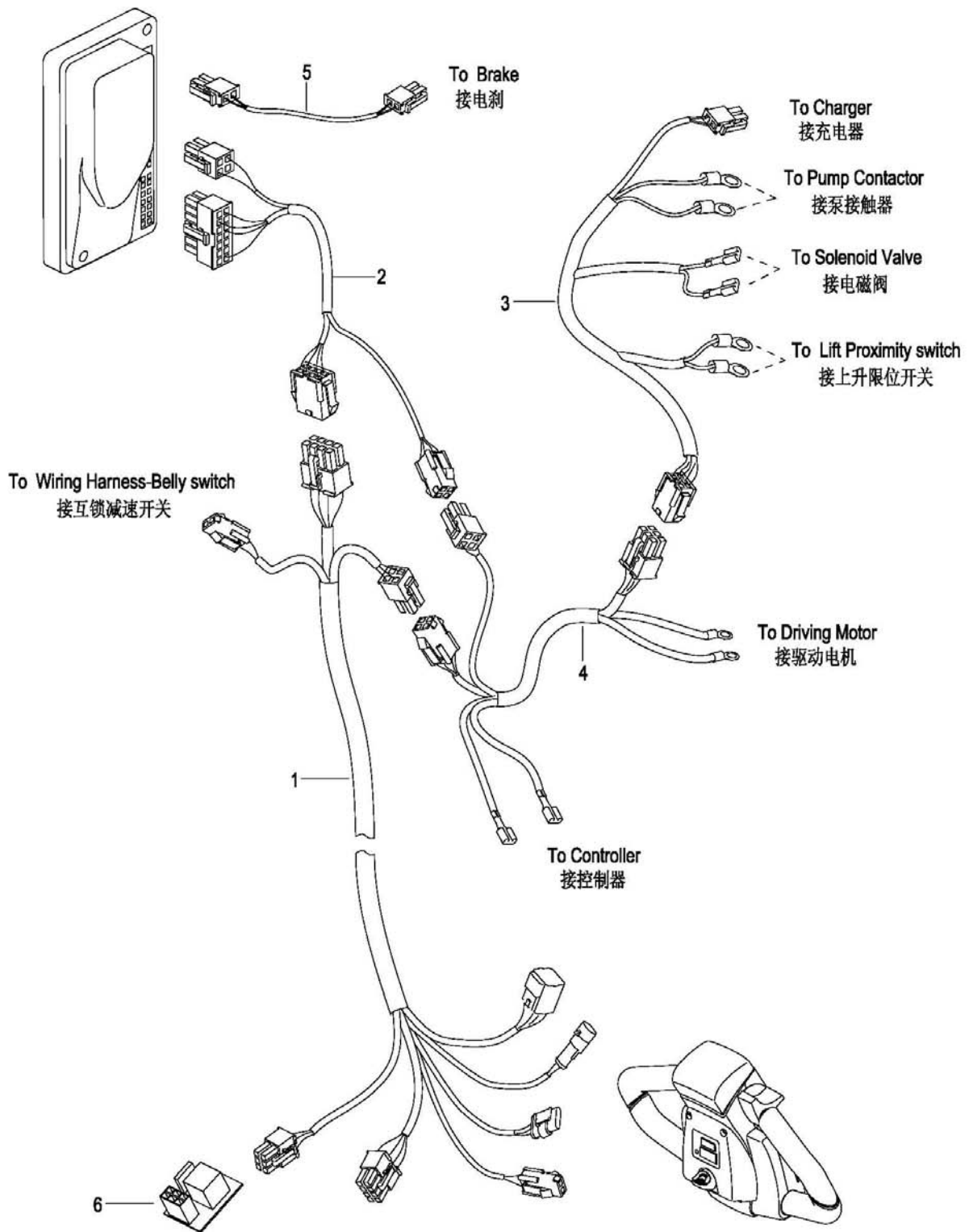


0501 Electrical System

电气系统

Index	Part No.	Part Name		No.	Applied Date	Remark
序号	零件编号	零件名称		数量	适用日期	备注
1	01 1121-142000-00	Controller Cover	控制器外罩	1	-E2321553	
	02 1121-142000-0A	Controller Cover	控制器外罩	1	E2321554-	
2	01 1115-510004-00	Controller	控制器	1		Cancelled/取消
	02 1115-510004-00-A0	Controller	控制器	1		
3	0000-000121-00	Screw M4×35	螺钉	2		
4	0000-000139-00	Nut M4	螺母	4		
5	0000-000028-00	Screw M4×10	螺钉	7		
6	0000-000122-00	Lockwasher ø4	弹垫	9		
7	1121-500002-00	Plate	压线板	1		
8	1120-500006-00	Lifting Limit Switch	起升限位开关	1		
9	0000-000208-00	Screw M4×25	螺钉	2		
10	1115-500006-00	Charger Cable EUROPE	充电线 欧标	1		For EUROPE
10	1115-500006-10	Charger Cable USA	充电线 美标	1		For USA
10	1115-500006-20	Charger Cable AUS	充电线 澳标	1		For AUS
10	1115-500006-30	Charger Cable END	充电线 英标	1		For END
10	1115-500006-40	Charger Cable JAPAN	充电线 日标	1		For JAPAN
10	1115-500006-50	Charger Cable CHINA	充电线 国标	1		For CHINA
10	1115-500006-60	Charger Cable CH	充电线 瑞标	1		For CH
11	0000-000004-00	Screw M5×12	螺钉	4		
12	0000-000546-00	Nut M5	螺母	4		
13	0000-000206-00	Lockwasher ø5	弹垫	6		
14	0000-000390-00	Flatwasher ø5	平垫	4		
15	1114-520007-00	Charger	充电器	1		
16	1114-540000-00	Emergency Stop Switch	急停开关	1		
17	0000-000004-00	Screw M5×12	螺钉	2		
18	0000-000196-00	Nut M8	螺母	2		
19	1120-540001-00-B	Fuse Stand	保险丝座	1		
20	1115-510003-00	Fuse 100A	保险丝 100A	1		
21	0000-000126-00	Screw M 6×16	螺钉	2		
22	0000-000176-00	Flatwasher ø8	平垫	4		
23	1114-540001-00	Switch Button	开关按钮	1		
24	1114-540002-00	Emergency Stop Switch Seat	开关座	1		
25	1114-140002-00	Side Cover	侧罩	1		

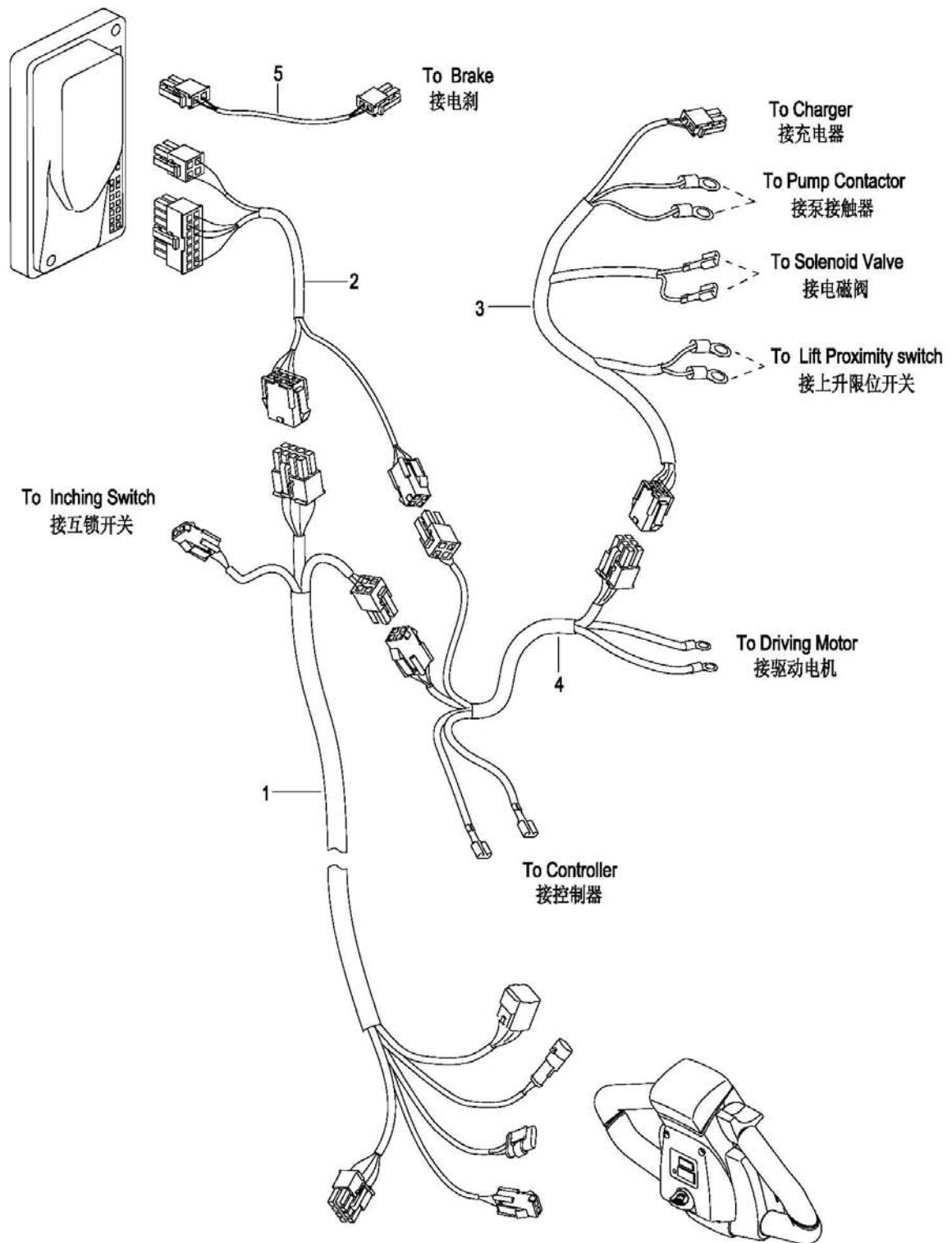
0502 Wire Harness Assembly



0502 Wire Harness Assembly**线束总成**

Index	Part No.	Part Name		No.	Applied Date	Remark
序号	零件编号	零件名称		数量	适用日期	备注
1	1114-520001-00	Master Wire Harness	主线束	1	-E2321553	
2	1114-520002-00	Controller Wire Harness	控制器转接线束	1	-E2321553	
3	1114-520003-00	Hydraulic Wire Harness	液压线束	1		
4	1114-520004-10	Switching Wire Harness	液压转接线束	1		
5	1121-520006-0A	Brake Wire Harness	制动器转接线束	1		
6	1114-500006-00	Relay Module	继电器模块	1	-E2321553	

050201 Wire Harness Assembly

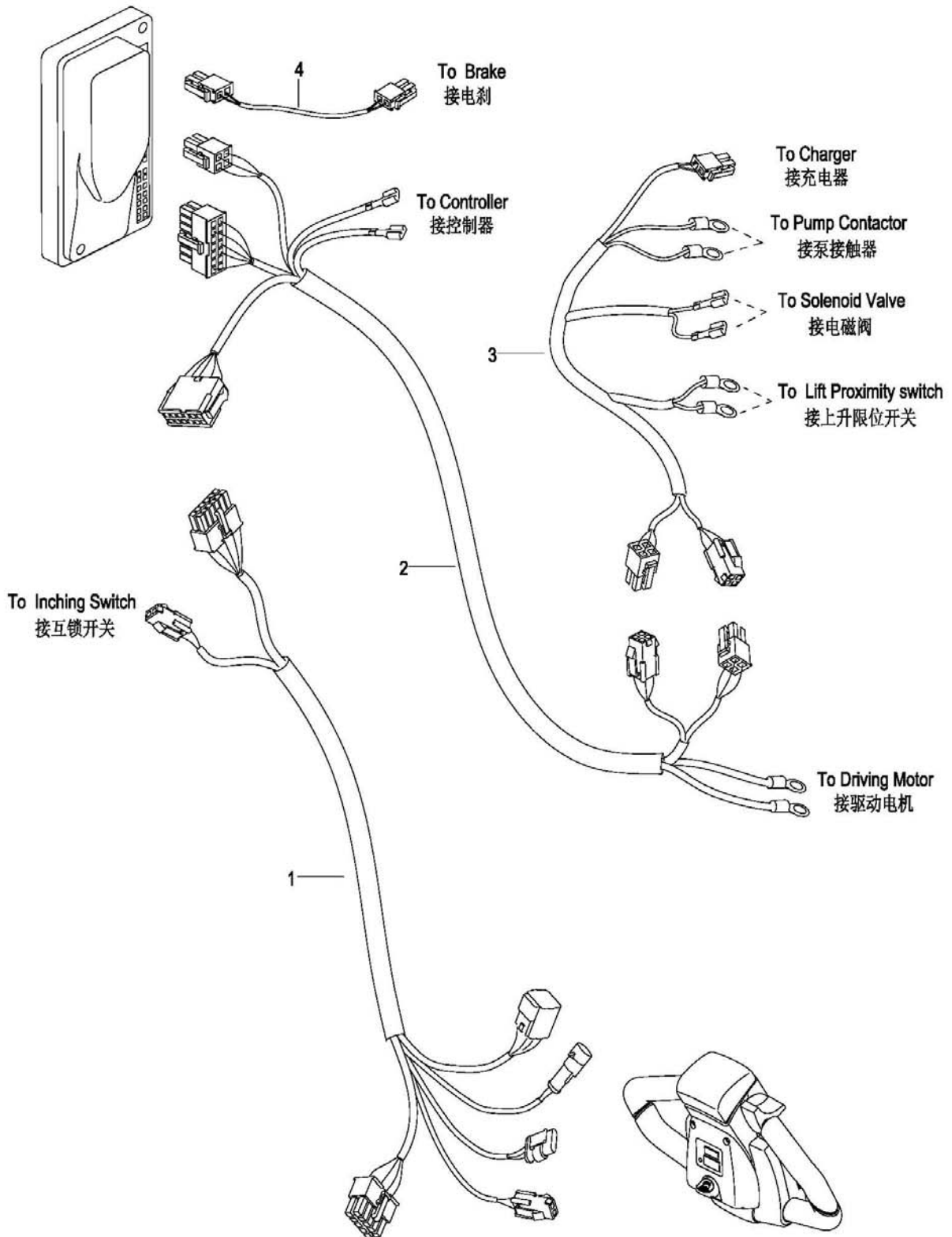


050201 Wire Harness Assembly

线束总成

Index	Part No.	Part Name		No.	Applied Date	Remark
序号	零件编号	零件名称		数量	适用日期	备注
1	1114-520001-10	Master Wire Harness	主线束	1	E2321554-E24140230	
2	1114-520002-10	Controller Wire Harness	控制器转接线束	1	E2321554-E24140230	
3	1114-520003-00	Hydraulic Wire Harness	液压线束	1	-E24140230	
4	1114-520004-10	Switching Wire Harness	液压转接线束	1	-E24140230	
5	1121-520006-0A	Brake Wire Harness	制动器转接线束	1		

050202 Wire Harness Assembly

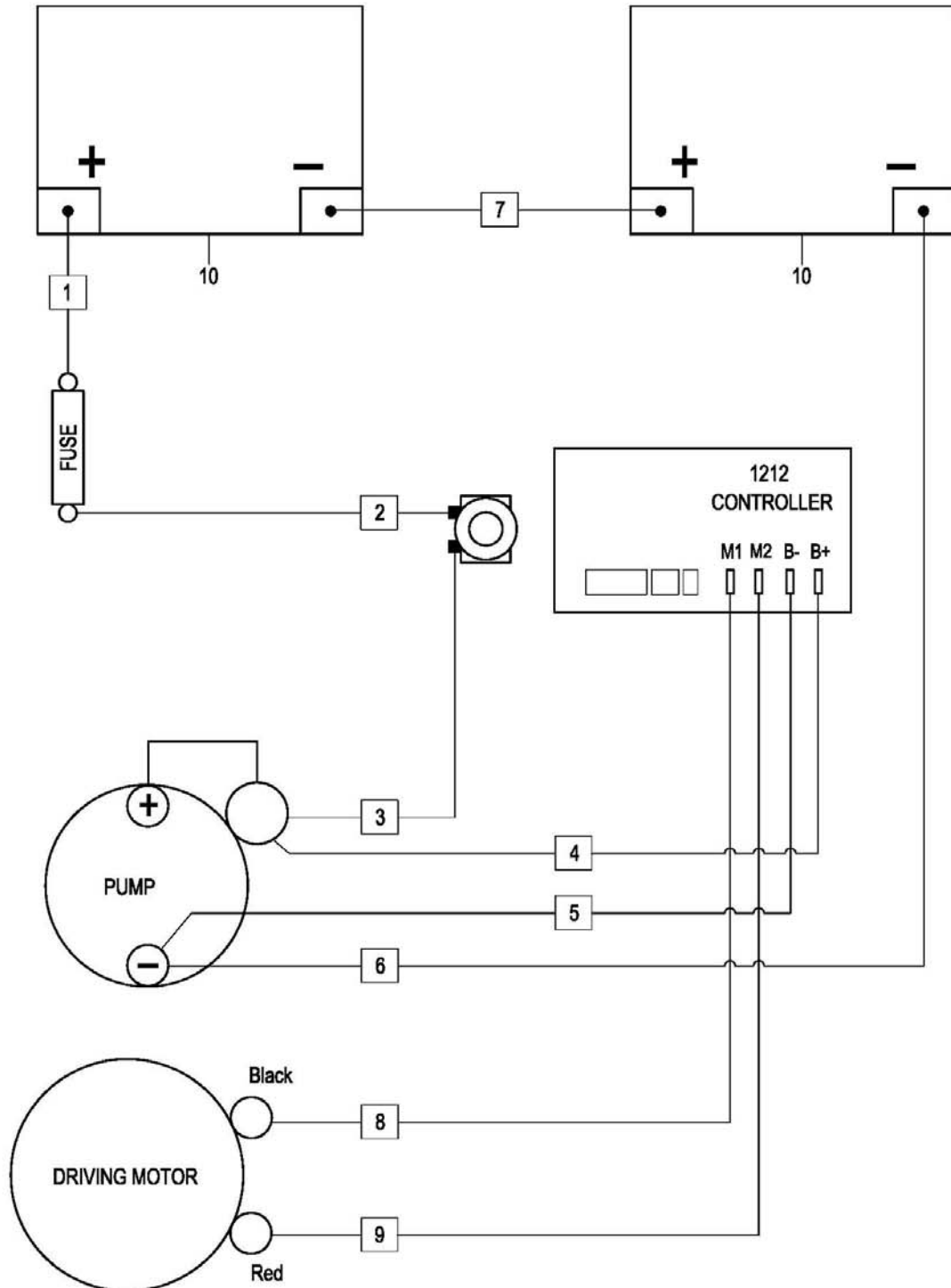


050202 Wire Harness Assembly

线束总成

Index	Part No.	Part Name		No.	Applied Date	Remark
序号	零件编号	零件名称		数量	适用日期	备注
1	1114-520008-00	Master Wire Harness	主线束	1	E24140231-	
2	1114-520009-00	Switching Wire Harness	液压转接线束	1	E24140231-	
3	1114-520010-00	Hydraulic Wire Harness	液压线束	1	E24140231-	
4	1121-520006-0A	Brake Wire Harness	制动器转接线束	1		

0503 Cable Assembly



0503 Cable Assembly

电缆总成

Index	Part No.	Part Name		No.	Applied Date	Remark
序号	零件编号	零件名称		数量	适用日期	备注
1	1114-530001-00	Fuse-Battery Cable	电瓶正极到保险丝电缆	1		
2	1114-530002-00	Fuse-Switch Cable	保险丝到急停电缆	1		
3	1114-530003-00	P+ Cable	急停到液压站电缆	1		
4	1114-530004-00	B+ Cable	控制器正极电缆	1		
5	1114-530005-00	B- Cable	控制器负极电缆	1		
6	1114-530006-00	P- Cable	电瓶负极到液压站	1		
7	1114-530007-00	Battery Connector Cable	电瓶间电缆	1		
8	1121-530003-00	M1 Cable	M1 电缆	1		NOTE
9	1121-530004-00	M2 Cable	M2 电缆	1		NOTE
10	1114-500003-00	Battery	电瓶	2		

NOTE : In the Switching Wire Harness(1114-520009-00),alone cannot be replaced.

在液压转接线束（1114-520009-00）中，不能单独更换。